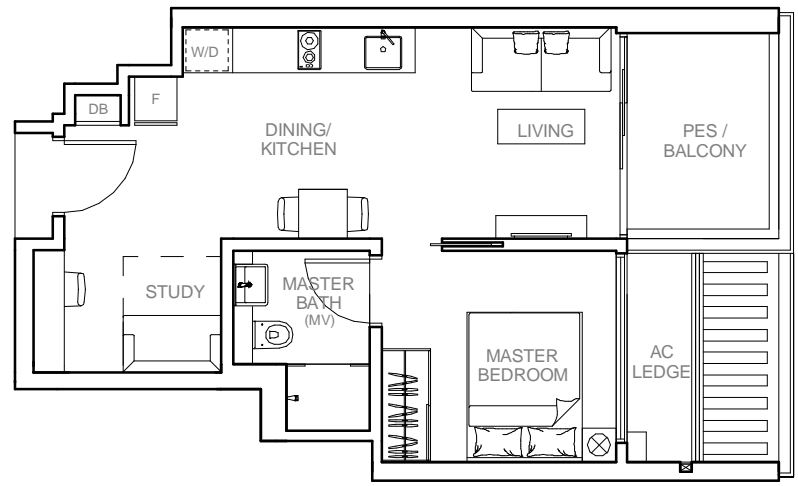


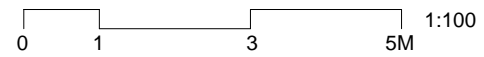
# Type A5 (1+Study)

**Area:** 560 ft<sup>2</sup> / 52 m<sup>2</sup>  
 (inclusive of 7 m<sup>2</sup> Pes / Balcony & 3 m<sup>2</sup> A/C Ledge)

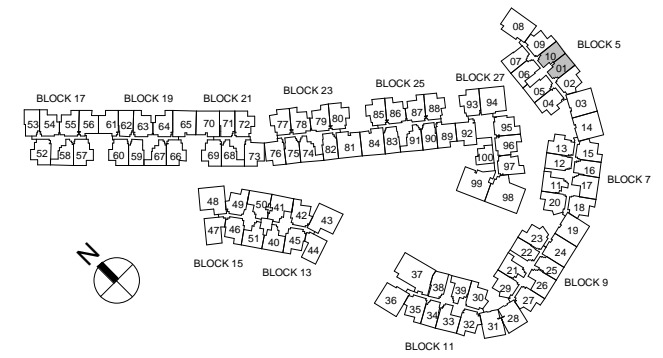
**Units:** Blk 5, #01-01 (Pes)\*  
 #02-01 To #05-01\*  
 #01-10 (Pes)  
 #02-10 To #05-10



- Legend**
- \* - Mirrored Unit
  - F - Fridge
  - W/D - Washer cum Dryer
  - DB - Distribution Board Cabinet



ALL PLANS SUBJECTED TO CHANGES BY THE RELEVANT AUTHORITIES. MEASUREMENTS ARE APPROXIMATE ONLY AND SUBJECT TO FINAL SURVEY. INFORMATION ACCURATE AS OF 02.10.2014



# Type A6 (1+Study)

**Area:** 570 ft<sup>2</sup> / 53 m<sup>2</sup>

(inclusive of 7 m<sup>2</sup> Pes / Balcony & 3 m<sup>2</sup> A/C Ledge)

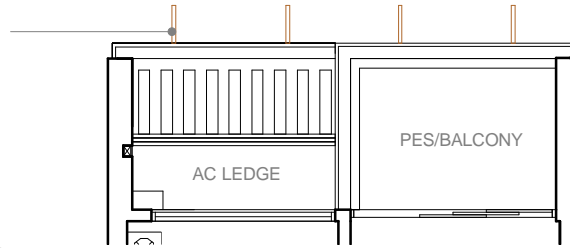
- Units:**
- Blk 7, #01-12 (Pes)\*  
#02-12 To #04-12\*  
#01-16 (Pes)\*  
#02-16 To #04-16\*
  - Blk 9, #01-22 (Pes)\*  
#02-22 To #04-22\*  
#01-25 (Pes)\*  
#02-25 To #04-25\*
  - Blk 11, #01-34 (Pes)  
#02-34 To #04-34
  - Blk 19, #02-59 (Pes)  
#03-59 To #06-59  
#01-62 (Pes)  
#02-62 To #06-62
  - Blk 21, #01-71 (Pes)  
#02-71 To #07-71
  - Blk 23, #01-75 (Pes)\*  
#02-75 To #06-75\*  
#01-82 (Pes)\*  
#02-82 To #06-82\*
  - Blk 25, #01-83 (Pes)  
#02-83 To #06-83  
#01-90 (Pes)  
#02-90 To #06-90

Applicable To Units:

Blk 21 #06-71

Blk 23 #05-75\*  
#05-82\*

Blk 25 #05-83  
#05-90

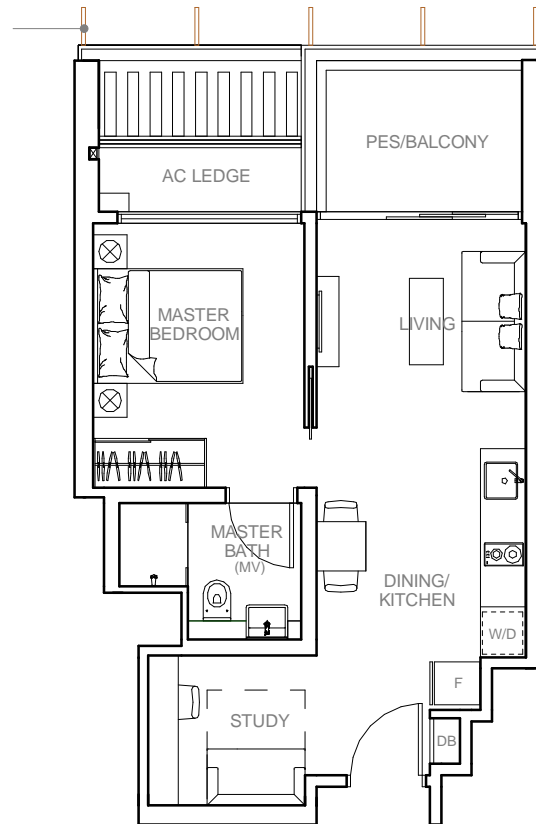


Applicable To Units:

Blk 21 #05-71 & #07-71

Blk 23 #06-75\*  
#06-82\*

Blk 25 #06-83  
#06-90



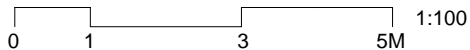
Legend

\* - Mirrored Unit

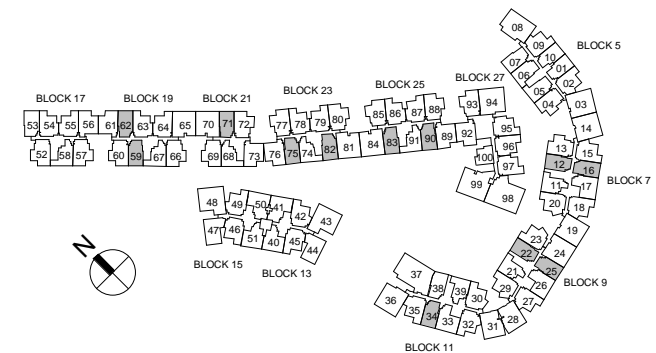
F - Fridge

W/D - Washer cum Dryer

DB - Distribution Board Cabinet



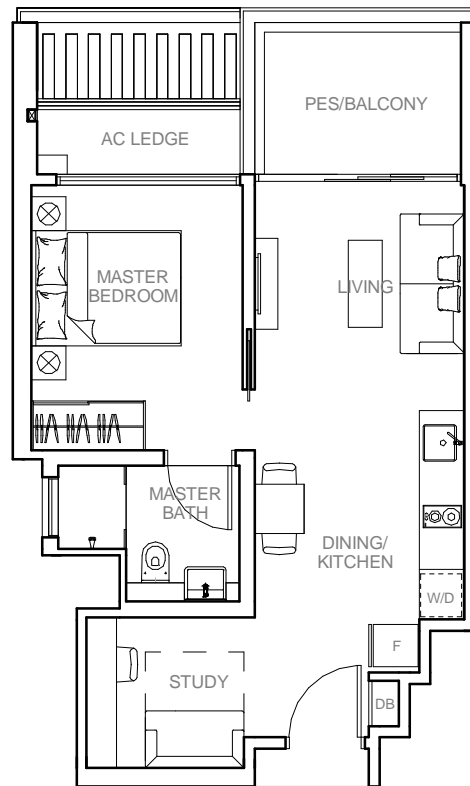
ALL PLANS SUBJECTED TO CHANGES BY THE RELEVANT AUTHORITIES. MEASUREMENTS ARE APPROXIMATE ONLY AND SUBJECT TO FINAL SURVEY. INFORMATION ACCURATE AS OF 02.10.2014



# Type A6a (1+Study)

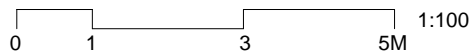
**Area:** 570 ft<sup>2</sup> / 53 m<sup>2</sup>  
 (inclusive of 7 m<sup>2</sup> Pes / Balcony & 3 m<sup>2</sup> A/C Ledge)

**Units:** Blk 17, #01-53 (Pes)  
 #02-53

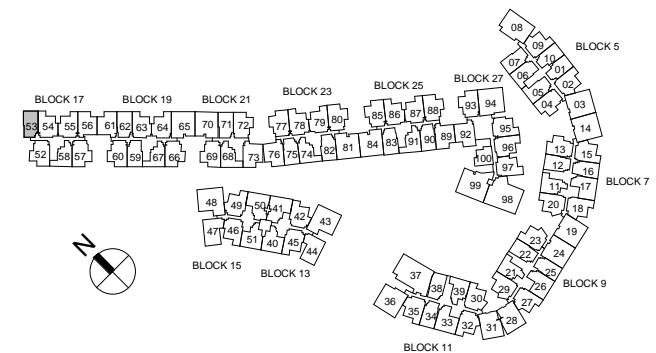


**Legend**

- \* - Mirrored Unit
- F - Fridge
- W/D - Washer cum Dryer
- DB - Distribution Board Cabinet



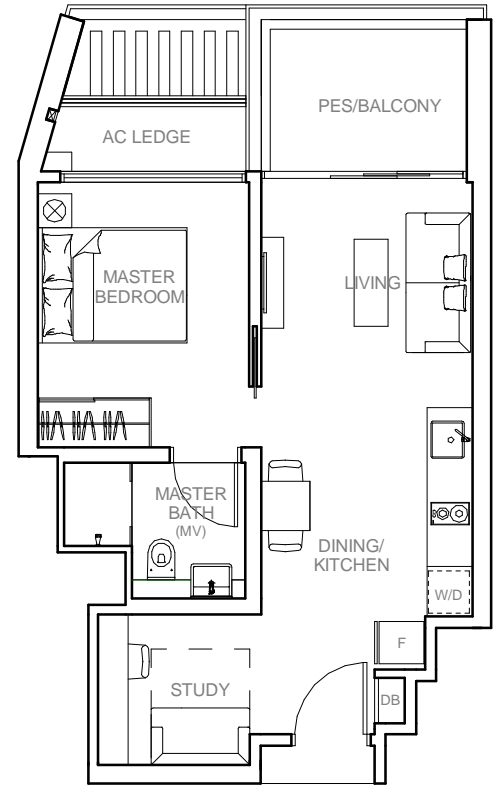
ALL PLANS SUBJECTED TO CHANGES BY THE RELEVANT AUTHORITIES. MEASUREMENTS ARE APPROXIMATE ONLY AND SUBJECT TO FINAL SURVEY. INFORMATION ACCURATE AS OF 02.10.2014



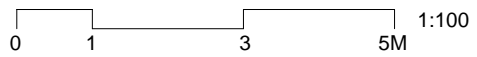
# Type A7 (1+Study)

**Area:** 570 ft<sup>2</sup> / 53 m<sup>2</sup>  
 (inclusive of 7 m<sup>2</sup> Pes / Balcony & 3 m<sup>2</sup> A/C Ledge)

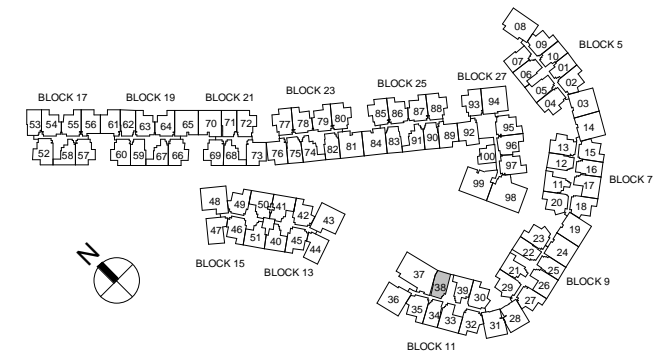
**Units:** Blk 11, #01-38 (Pes)  
 #02-38 To #04-38



- Legend**
- F - Fridge
  - W/D - Washer cum Dryer
  - DB - Distribution Board Cabinet



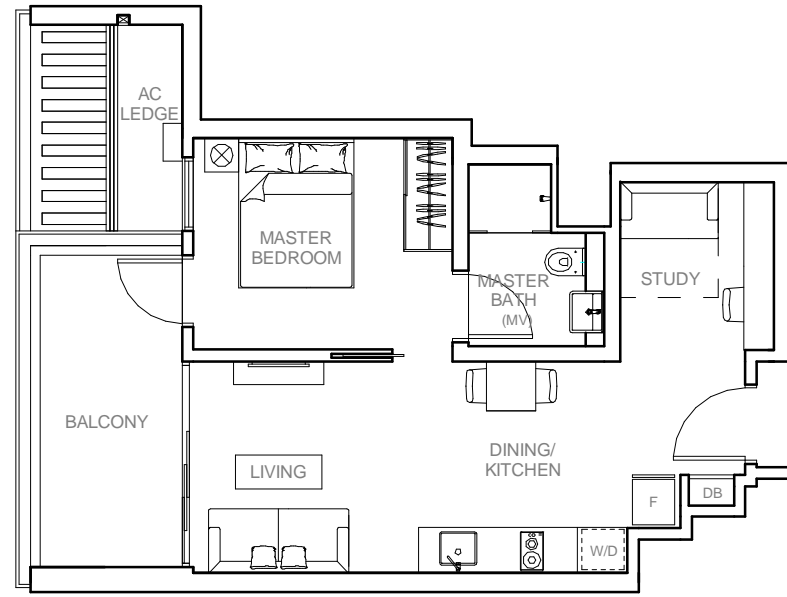
ALL PLANS SUBJECTED TO CHANGES BY THE RELEVANT AUTHORITIES. MEASUREMENTS ARE APPROXIMATE ONLY AND SUBJECT TO FINAL SURVEY. INFORMATION ACCURATE AS OF 02.10.2014



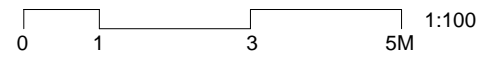
# Type A8 (1+Study)

**Area:** 614 ft<sup>2</sup> / 57 m<sup>2</sup>  
 (inclusive of 11 m<sup>2</sup> Balcony & 3 m<sup>2</sup> A/C Ledge)

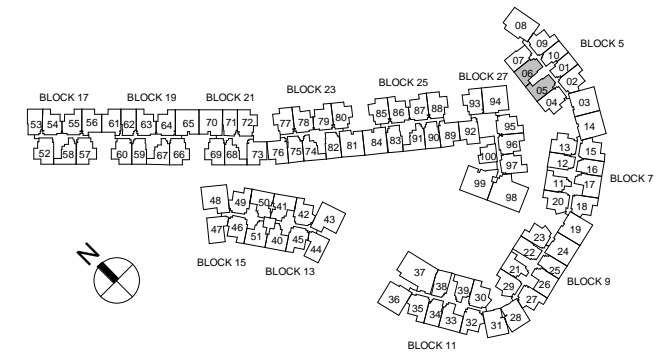
**Units:** Blk 5, #02-05 To #05-05  
 #02-06 To #05-06\*



- Legend
- \* - Mirrored Unit
  - F - Fridge
  - W/D - Washer cum Dryer
  - DB - Distribution Board Cabinet



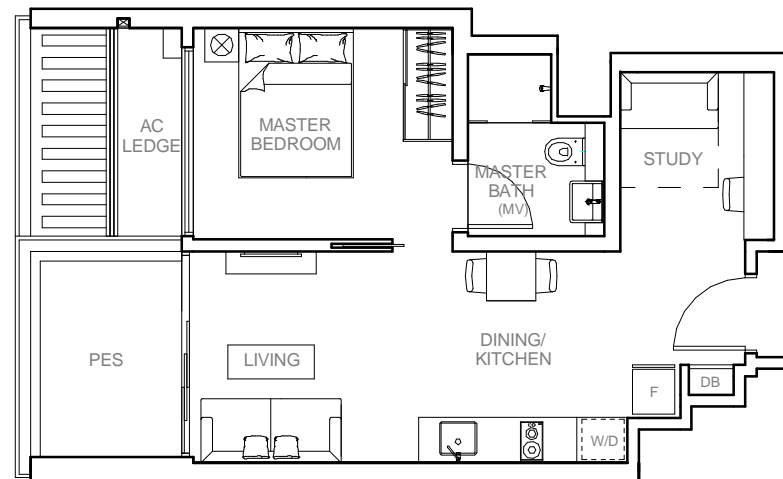
ALL PLANS SUBJECTED TO CHANGES BY THE RELEVANT AUTHORITIES. MEASUREMENTS ARE APPROXIMATE ONLY AND SUBJECT TO FINAL SURVEY. INFORMATION ACCURATE AS OF 02.10.2014



# Type A8-G (1+Study)

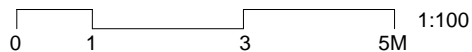
**Area:** 570 ft<sup>2</sup> / 53 m<sup>2</sup>  
(inclusive of 7 m<sup>2</sup> Pes & 3 m<sup>2</sup> A/C Ledge)

**Units:** Blk 5, #01-05  
#01-06\*



**Legend**

- \* - Mirrored Unit
- F - Fridge
- W/D - Washer cum Dryer
- DB - Distribution Board Cabinet



ALL PLANS SUBJECTED TO CHANGES BY THE RELEVANT AUTHORITIES. MEASUREMENTS ARE APPROXIMATE ONLY AND SUBJECT TO FINAL SURVEY. INFORMATION ACCURATE AS OF 02.10.2014

