

Type DK1-G (Dual-Key)

Area: 753 ft² / 70 m²
(inclusive of 13 m² Pes & 4 m² A/C Ledge)

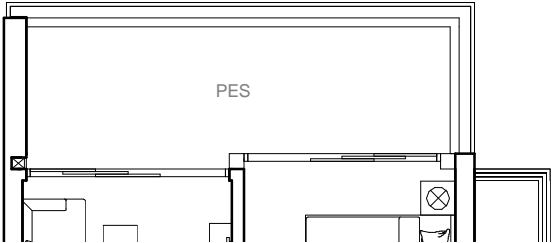
Units: Blk 13, #01-42
Blk 15, #01-49*

Type DK1 (Dual-Key)

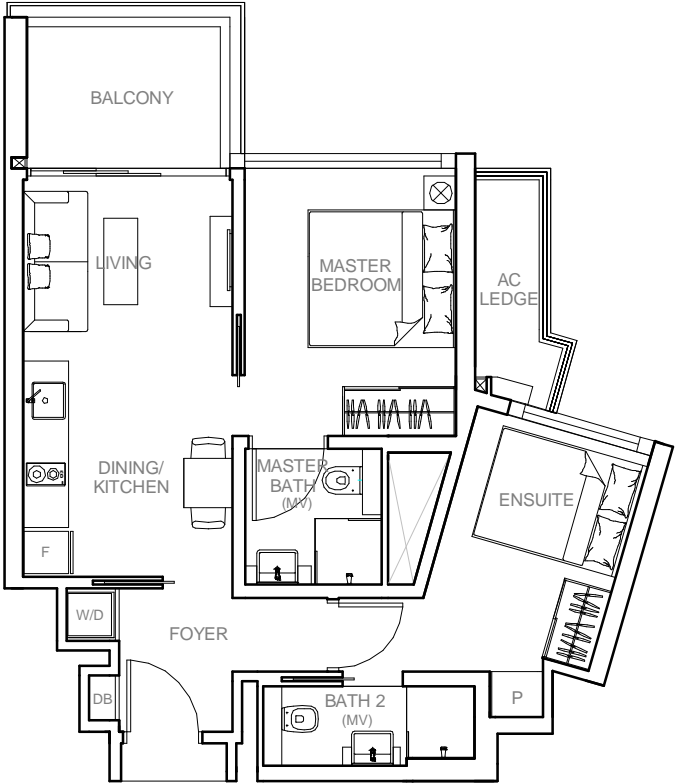
Area: 689 ft² / 64 m²
(inclusive of 7 m² Balcony & 4 m² A/C Ledge)

Units: Blk 13, #02-42 To #04-42
Blk 15, #02-49 To #04-49*

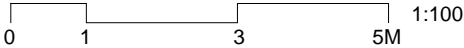
TYPE DK1-G



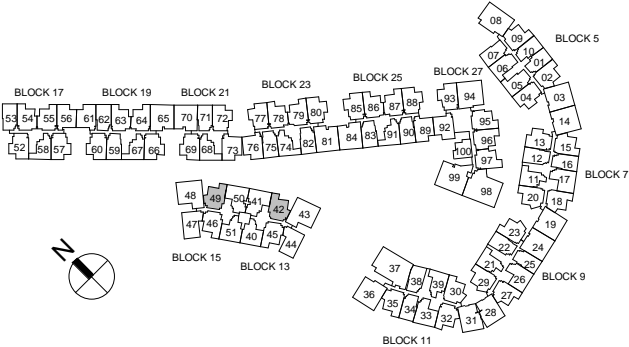
TYPE DK1



- Legend**
- * - Mirrored Unit
 - F - Fridge
 - W/D - Washer cum Dryer
 - DB - Distribution Board Cabinet
 - P - Pantry with built-in microwave oven & built-in fridge



ALL PLANS SUBJECTED TO CHANGES BY THE RELEVANT AUTHORITIES. MEASUREMENTS ARE APPROXIMATE ONLY AND SUBJECT TO FINAL SURVEY. INFORMATION ACCURATE AS OF 02.10.2014

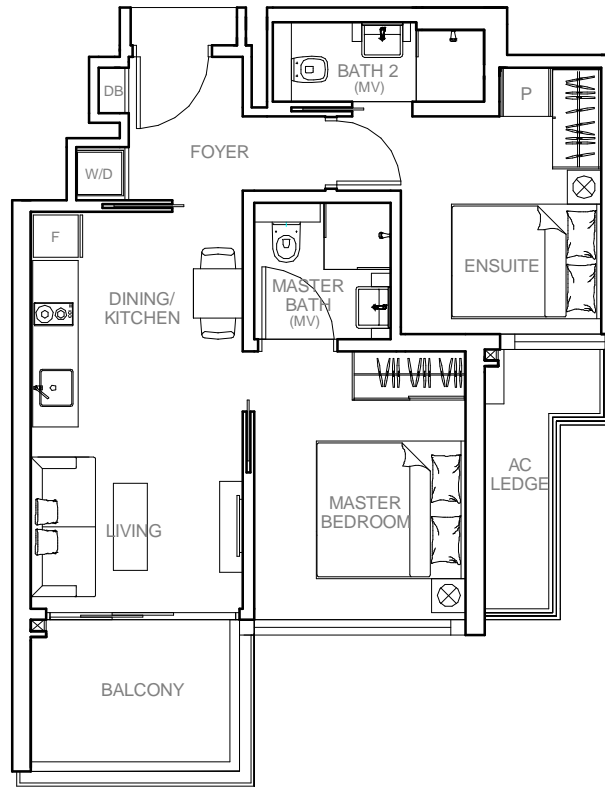


Type DK2 (Dual-Key)

Area: 689 ft² / 64 m²
(inclusive of 7 m² Balcony & 5 m² A/C Ledge)

Units: Blk 13, #02-45 To #04-45
Blk 15, #02-46 To #04-46*

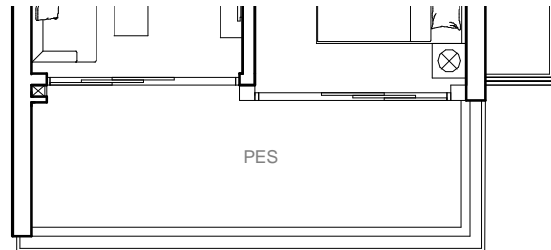
TYPE DK2



Legend

- * - Mirrored Unit
- F - Fridge
- W/D - Washer cum Dryer
- DB - Distribution Board Cabinet
- P - Pantry with built-in microwave oven & built-in fridge

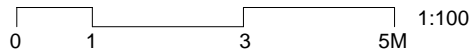
TYPE DK2-G



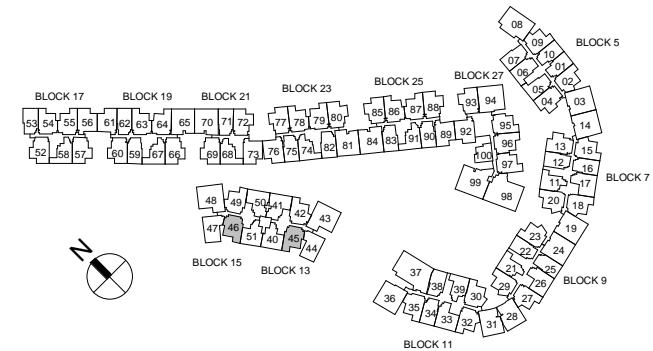
Type DK2-G (Dual-Key)

Area: 753 ft² / 70 m²
(inclusive of 13 m² Pes & 5 m² A/C Ledge)

Units: Blk 13, #01-45
Blk 15, #01-46*



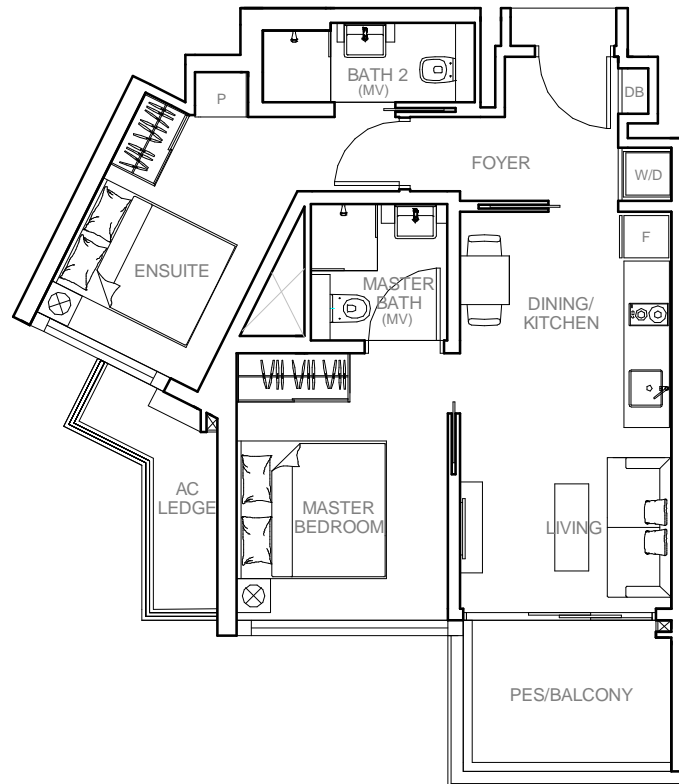
ALL PLANS SUBJECTED TO CHANGES BY THE RELEVANT AUTHORITIES. MEASUREMENTS ARE APPROXIMATE ONLY AND SUBJECT TO FINAL SURVEY. INFORMATION ACCURATE AS OF 02.10.2014



Type DK3 (Dual-Key)

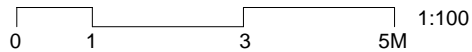
Area: 700 ft² / 65 m²
(inclusive of 7 m² Pes / Balcony & 4 m² A/C Ledge)

Units: Blk 9, #01-27 (Pes)
#02-27 To #04-27
Blk 11, #01-32 (Pes)*
#02-32 To #04-32*

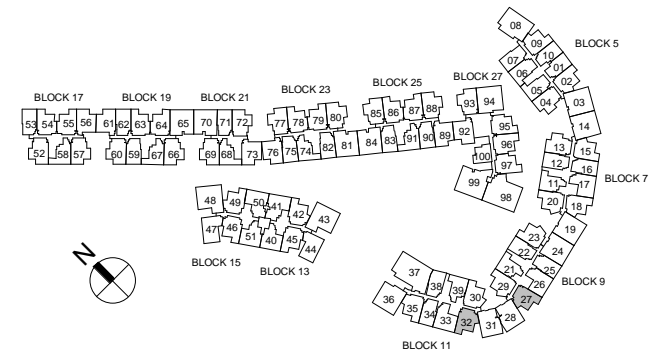


Legend

- * - Mirrored Unit
- F - Fridge
- W/D - Washer cum Dryer
- DB - Distribution Board Cabinet
- P - Pantry with built-in microwave oven & built-in fridge



ALL PLANS SUBJECTED TO CHANGES BY THE RELEVANT AUTHORITIES. MEASUREMENTS ARE APPROXIMATE ONLY AND SUBJECT TO FINAL SURVEY. INFORMATION ACCURATE AS OF 02.10.2014



Type DK4 (Dual-Key)

Area: 700 ft² / 65 m²
(inclusive of 7 m² Pes / Balcony & 3 m² A/C Ledge)

Units: Blk 17, #02-52 (Pes)*
#03-52, #04-52*
#02-57 (Pes)
#03-57, #04-57

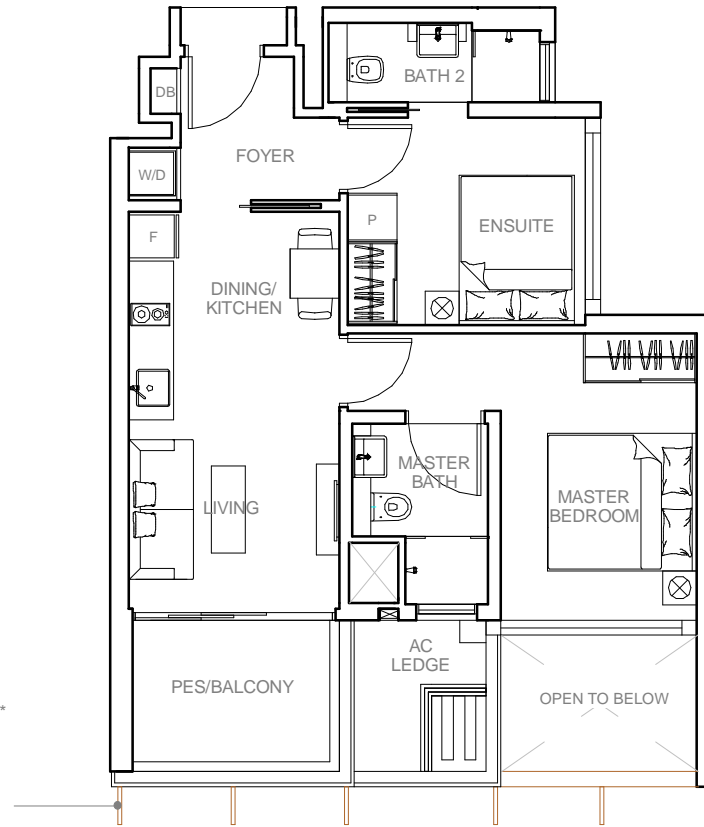
Blk 19, #02-60 (Pes)*
#03-60 To #06-60*
#02-66 (Pes)
#03-66 To #06-66

Blk 21, #01-69 (Pes)*
#02-69 To #07-69*
#01-72 (Pes)*
#02-72 To #07-72*

Blk 23, #01-77 (Pes)
#02-77 To #06-77
#01-80 (Pes)*
#02-80 To #06-80*

Blk 25, #01-85 (Pes)
#02-85 To #06-85
#01-88 (Pes)*
#02-88 To #06-88*

Blk 27, #01-93 (Pes)
#02-93 To #06-93



Applicable To Units:

Blk 21 #05-72 & #07-72*
#07-69*

Blk 23 #06-80*
#06-77

Blk 25 #06-88*
#06-85

Blk 27 #06-93

Applicable To Units:

Blk 21 #06-72*
#06-69*

Blk 23 #05-80*
#05-77

Blk 25 #05-88*
#05-85

Blk 27 #05-93

Legend

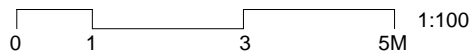
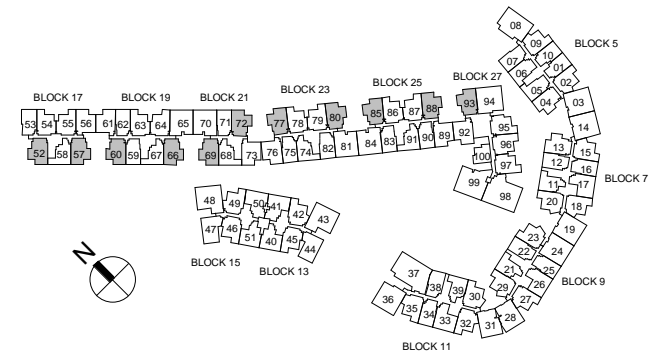
* - Mirrored Unit

F - Fridge

W/D - Washer cum Dryer

DB - Distribution Board Cabinet

P - Pantry with built-in microwave oven & built-in fridge

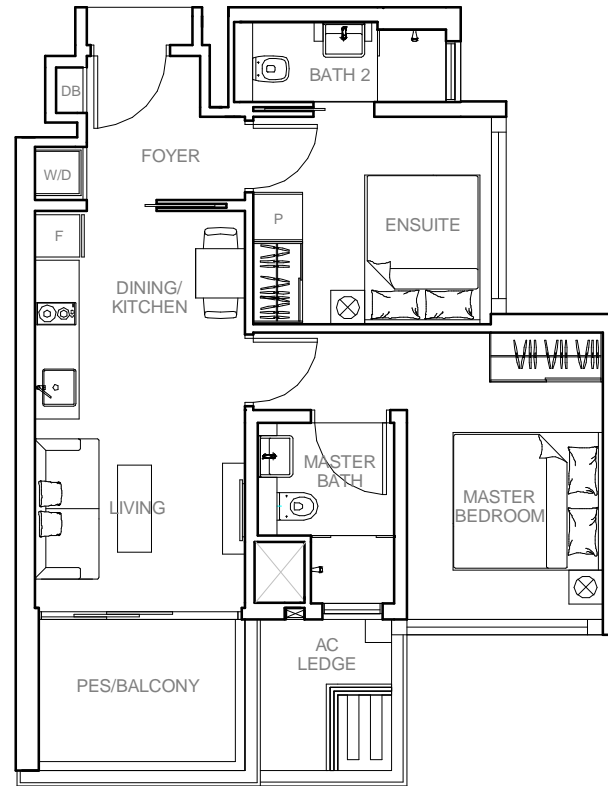


ALL PLANS SUBJECTED TO CHANGES BY THE RELEVANT AUTHORITIES. MEASUREMENTS ARE APPROXIMATE ONLY AND SUBJECT TO FINAL SURVEY. INFORMATION ACCURATE AS OF 02.10.2014

Type DK4a (Dual-Key)

Area: 700 ft² / 65 m²
 (inclusive of 7 m² Pes / Balcony & 3 m² A/C Ledge)

Units: Blk 5, #01-04 (Pes)
 #02-04 To #05-04
 Blk 7, #01-13 (Pes)*
 #02-13 To #04-13*



Legend

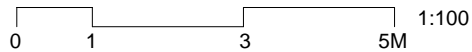
* - Mirrored Unit

F - Fridge

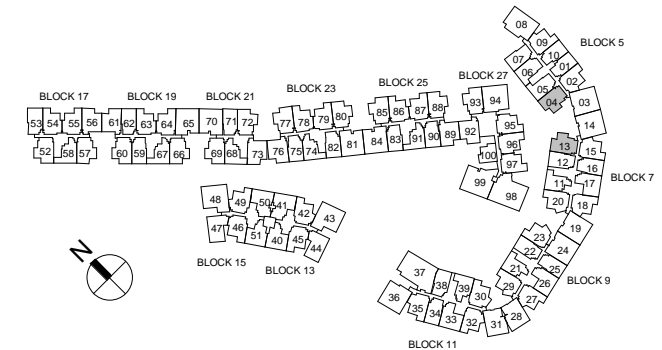
W/D - Washer cum Dryer

DB - Distribution Board Cabinet

P - Pantry with built-in microwave oven & built-in fridge



ALL PLANS SUBJECTED TO CHANGES BY THE RELEVANT AUTHORITIES. MEASUREMENTS ARE APPROXIMATE ONLY AND SUBJECT TO FINAL SURVEY. INFORMATION ACCURATE AS OF 02.10.2014



Type DK5 (Dual-Key)

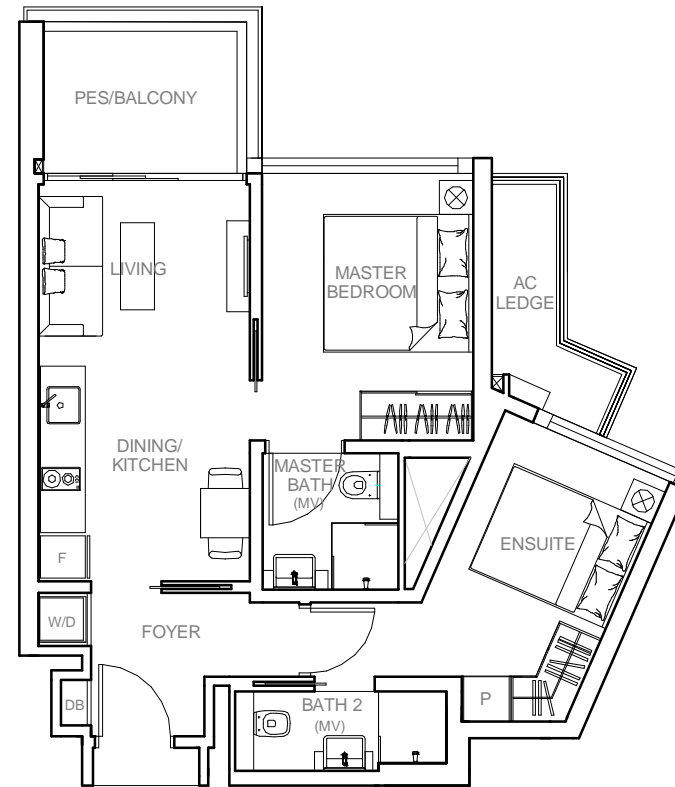
Area: 700 ft² / 65 m²
(inclusive of 7 m² Pes / Balcony & 4 m² A/C Ledge)

Units: Blk 5, #01-02 (Pes)
#02-02 To #05-02

Blk 7, #01-15 (Pes)*
#02-15 To #04-15*
#01-18 (Pes)
#02-18 To #04-18
#01-20 (Pes)*
#02-20 To #04-20*

Blk 9, #01-23 (Pes)
#02-23 To #04-23
#01-29 (Pes)*
#02-29 To #04-29*

Blk 11, #01-30 (Pes)
#02-30 To #04-30



Legend

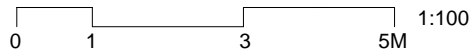
* - Mirrored Unit

F - Fridge

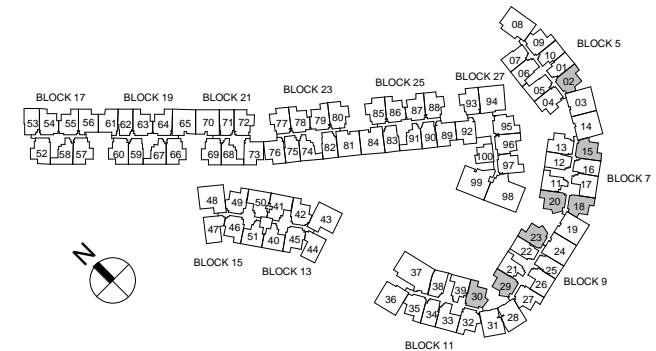
W/D - Washer cum Dryer

DB - Distribution Board Cabinet

P - Pantry with built-in microwave oven & built-in fridge



ALL PLANS SUBJECTED TO CHANGES BY THE RELEVANT AUTHORITIES. MEASUREMENTS ARE APPROXIMATE ONLY AND SUBJECT TO FINAL SURVEY. INFORMATION ACCURATE AS OF 02.10.2014

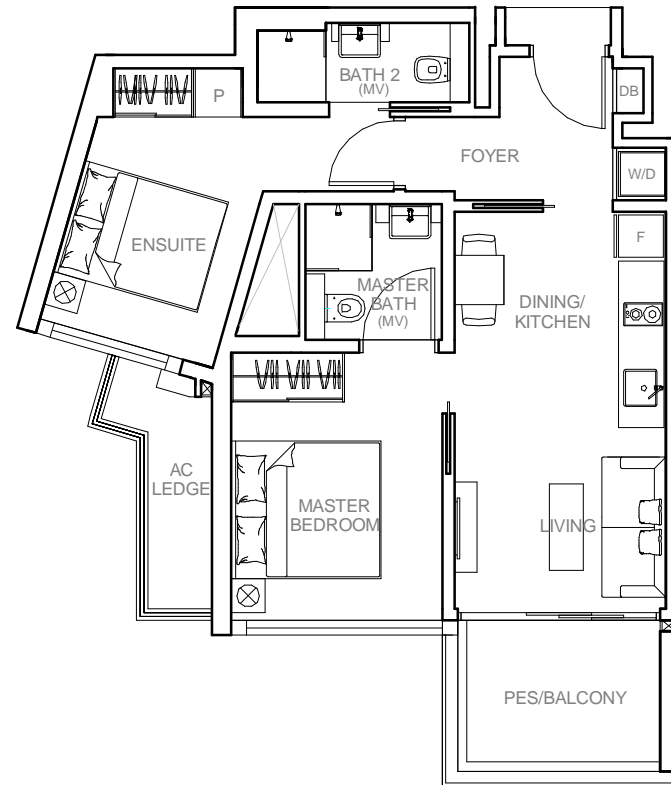


Type DK6 (Dual-Key)

Area: 700 ft² / 65m²
 (inclusive of 7 m² Pes / Balcony & 4 m² A/C Ledge)

Units: Blk 5, #01-09 (Pes)*
 #02-09 To #05-09*

Blk 11, #01-35 (Pes)
 #02-35 To #04-35



Legend

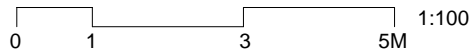
* - Mirrored Unit

F - Fridge

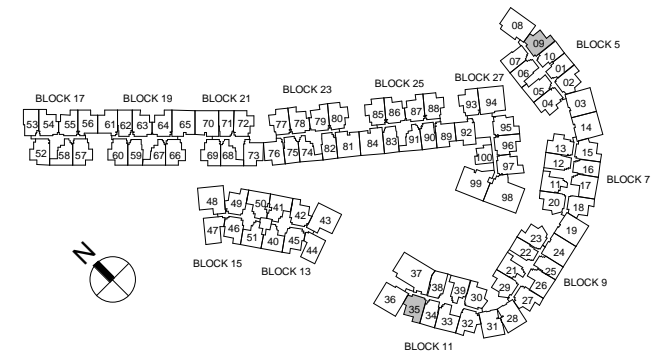
W/D - Washer cum Dryer

DB - Distribution Board Cabinet

P - Pantry with built-in microwave oven & built-in fridge



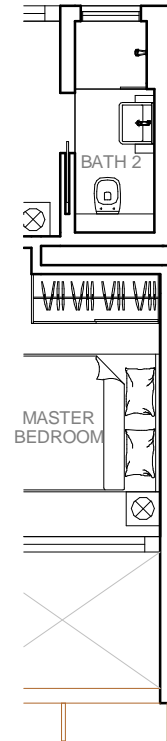
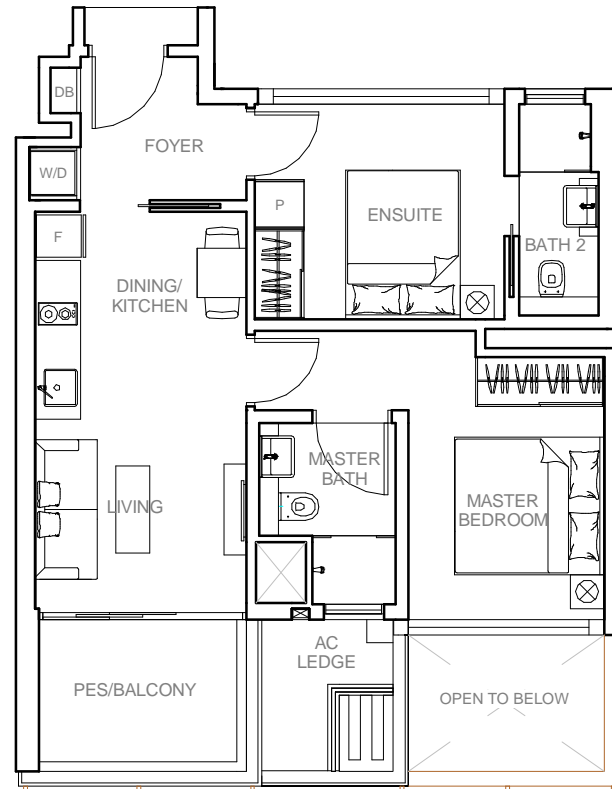
ALL PLANS SUBJECTED TO CHANGES BY THE RELEVANT AUTHORITIES. MEASUREMENTS ARE APPROXIMATE ONLY AND SUBJECT TO FINAL SURVEY. INFORMATION ACCURATE AS OF 02.10.2014



Type DK7 (Dual-Key)

Area: 700 ft² / 65 m²
(inclusive of 7 m² Pes / Balcony & 3 m² A/C Ledge)

- Units:**
- Blk 17, #01-56 (Pes)*
#02-56 To #04-56*
 - Blk 19, #01-61 (Pes)
#02-61 To #06-61
 - Blk 21, #01-73 (Pes)
#02-73 To #07-73
 - Blk 23, #01-76 (Pes)*
#02-76 To #06-76*
 - Blk 25, #01-89 (Pes)
#02-89 To #06-89
 - Blk 27, #01-92 (Pes)*
#02-92 To #06-92*



Applicable To Units:

Blk 19 #05-61 & #06-61

Applicable To Units:

Blk 21 #07-73
Blk 23 #06-76*
Blk 25 #06-89

Applicable To Units:

Blk 21 #06-73
Blk 23 #05-76*
Blk 25 #05-89

Applicable To Unit:

Blk 27 #06-92*

Applicable To Unit:

Blk 27 #05-92*

Legend

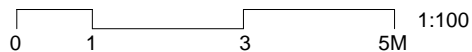
* - Mirrored Unit

F - Fridge

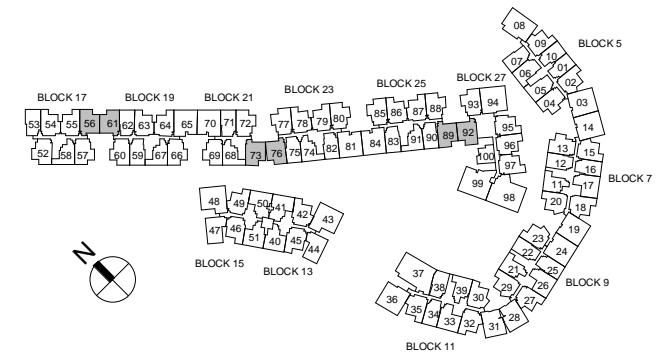
W/D - Washer cum Dryer

DB - Distribution Board Cabinet

P - Pantry with built-in microwave oven & built-in fridge



ALL PLANS SUBJECTED TO CHANGES BY THE RELEVANT AUTHORITIES. MEASUREMENTS ARE APPROXIMATE ONLY AND SUBJECT TO FINAL SURVEY. INFORMATION ACCURATE AS OF 02.10.2014



Type DK8 (Dual-Key)

Area: 710 ft² / 66 m²
(inclusive of 7 m² Pes / Balcony & 5 m² A/C Ledge)

- Units:**
- Blk 17, #01-54 (Pes)
#02-54 To #04-54
#01-55 (Pes)*
#02-55 To #04-55*
 - Blk 19, #01-63 (Pes)
#02-63 To #06-63
#01-64 (Pes)*
#02-64 To #06-64*
 - Blk 23, #01-78 (Pes)
#02-78 To #06-78
#01-79 (Pes)*
#02-79 To #06-79*
 - Blk 25, #01-86 (Pes)
#02-86 To #06-86
#01-87 (Pes)*
#02-87 To #06-87*
 - Blk 27, #01-96 (Pes)
#02-96 To #06-96
#01-97 (Pes)*
#02-97 To #06-97*

Applicable To Units:

Blk 23 #05-78
#05-79*

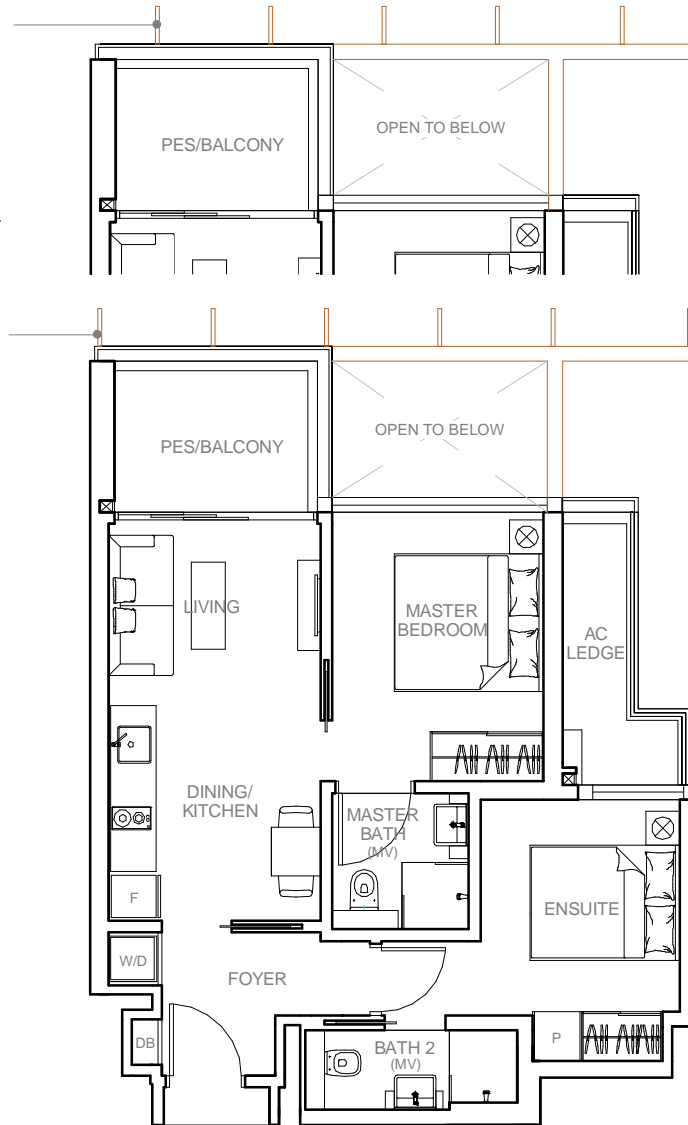
Blk 25 #05-86
#05-87*

Applicable To Units:

Blk 19 #06-63
#06-64*

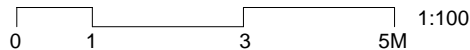
Blk 23 #06-78
#06-79*

Blk 25 #06-86
#06-87*

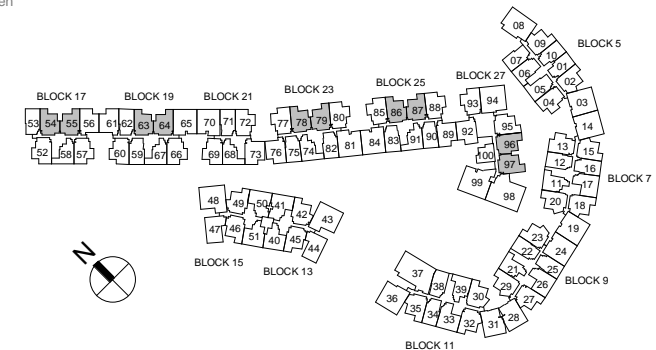


Legend

- * - Mirrored Unit
- F - Fridge
- W/D - Washer cum Dryer
- DB - Distribution Board Cabinet
- P - Pantry with built-in microwave oven & built-in fridge



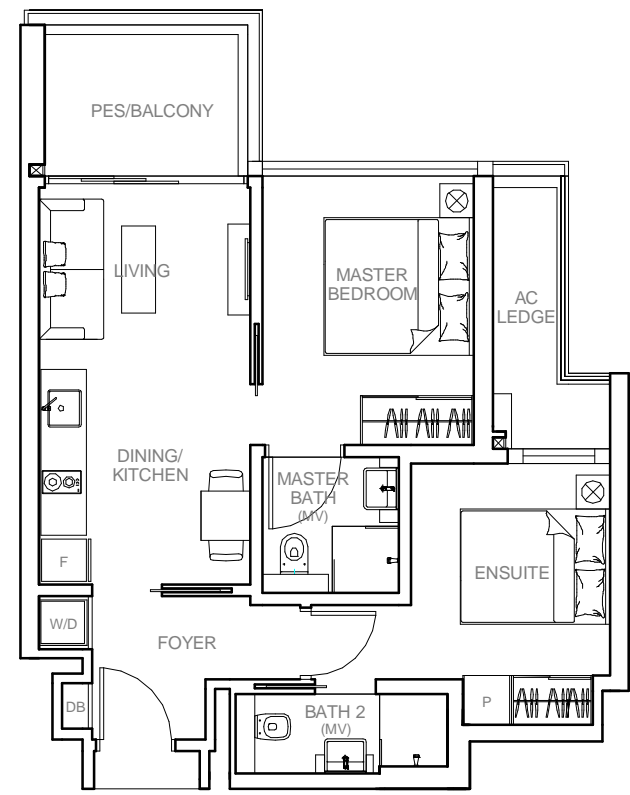
ALL PLANS SUBJECTED TO CHANGES BY THE RELEVANT AUTHORITIES. MEASUREMENTS ARE APPROXIMATE ONLY AND SUBJECT TO FINAL SURVEY. INFORMATION ACCURATE AS OF 02.10.2014



Type DK8a (Dual-Key)

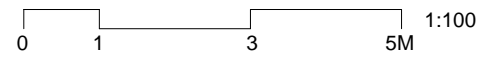
Area: 710 ft² / 66 m²
 (inclusive of 7 m² Pes / Balcony & 5 m² A/C Ledge)

Units: Blk 27, #01-95 (Pes)*
 #02-95 To #06-95*



Legend

- * - Mirrored Unit
- F - Fridge
- W/D - Washer cum Dryer
- DB - Distribution Board Cabinet
- P - Pantry with built-in microwave oven & built-in fridge



ALL PLANS SUBJECTED TO CHANGES BY THE RELEVANT AUTHORITIES. MEASUREMENTS ARE APPROXIMATE ONLY AND SUBJECT TO FINAL SURVEY. INFORMATION ACCURATE AS OF 02.10.2014

