

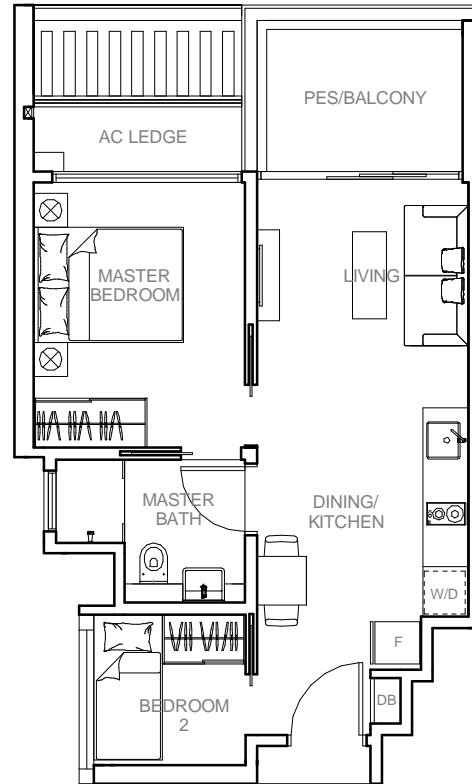
# Type B1 (2-Bedroom)

**Area:** 570 ft<sup>2</sup> / 53 m<sup>2</sup>  
 (inclusive of 7 m<sup>2</sup> Pes / Balcony & 3 m<sup>2</sup> A/C Ledge)

**Units:** Blk 5, #01-07 (Pes)\*

#02-07 To #05-07\*

Blk 17, #03-53, #04-53



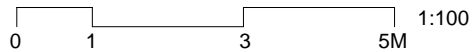
**Legend**

\* - Mirrored Unit

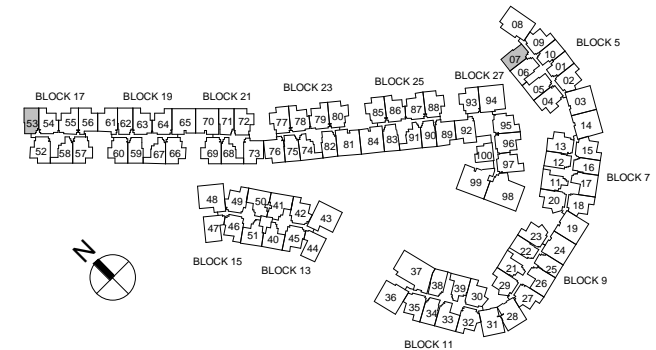
F - Fridge

W/D - Washer cum Dryer

DB - Distribution Board Cabinet



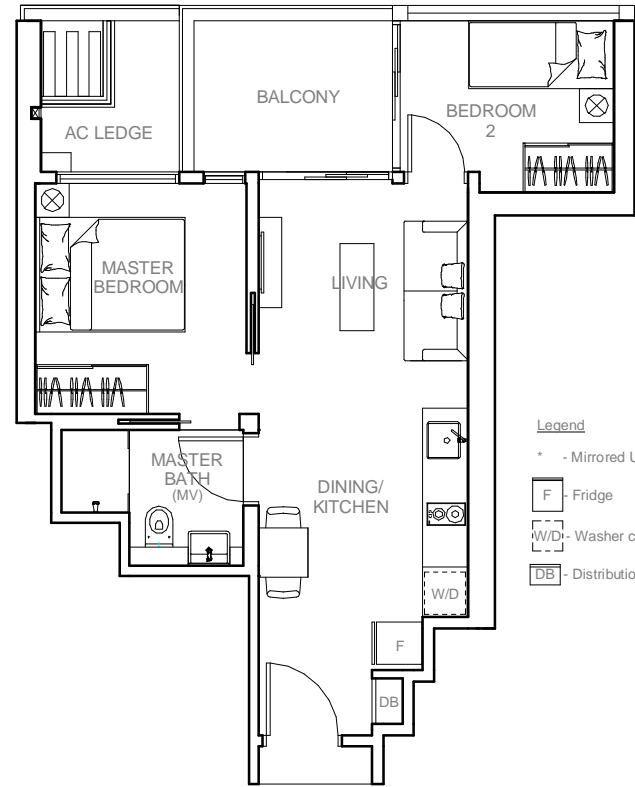
ALL PLANS SUBJECTED TO CHANGES BY THE RELEVANT AUTHORITIES. MEASUREMENTS ARE APPROXIMATE ONLY AND SUBJECT TO FINAL SURVEY. INFORMATION ACCURATE AS OF 02.10.2014



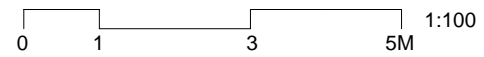
# Type B2 (2-Bedroom)

**Area:** 581 ft<sup>2</sup> / 54 m<sup>2</sup>  
 (inclusive of 7 m<sup>2</sup> Balcony & 3 m<sup>2</sup> A/C Ledge)

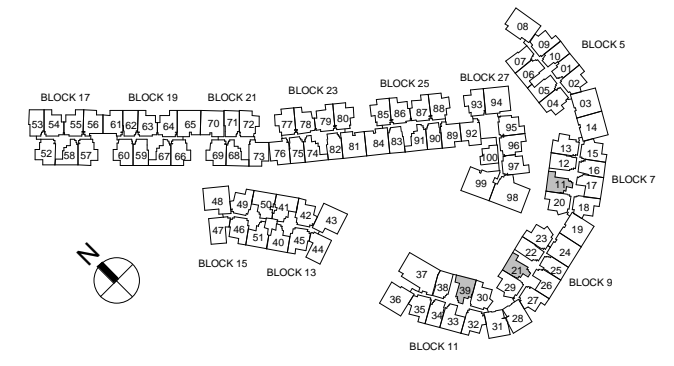
**Units:** Blk 7, #02-11 To #04-11  
 Blk 9, #02-21 To #04-21  
 Blk 11, #02-39 To #04-39\*



- Legend**
- \* - Mirrored Unit
  - F - Fridge
  - W/D - Washer cum Dryer
  - DB - Distribution Board Cabinet



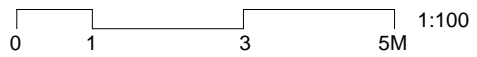
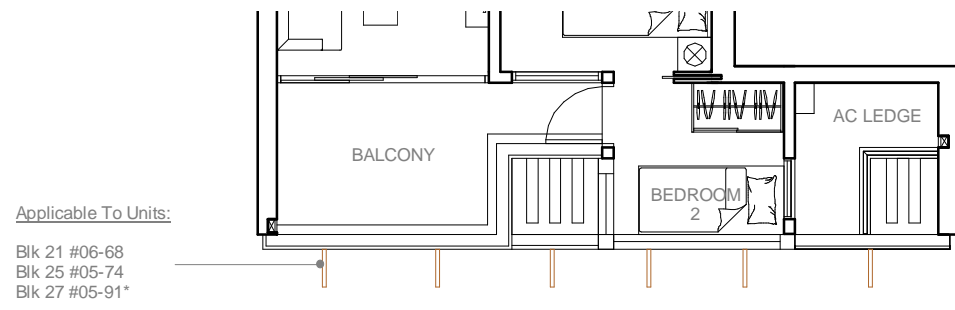
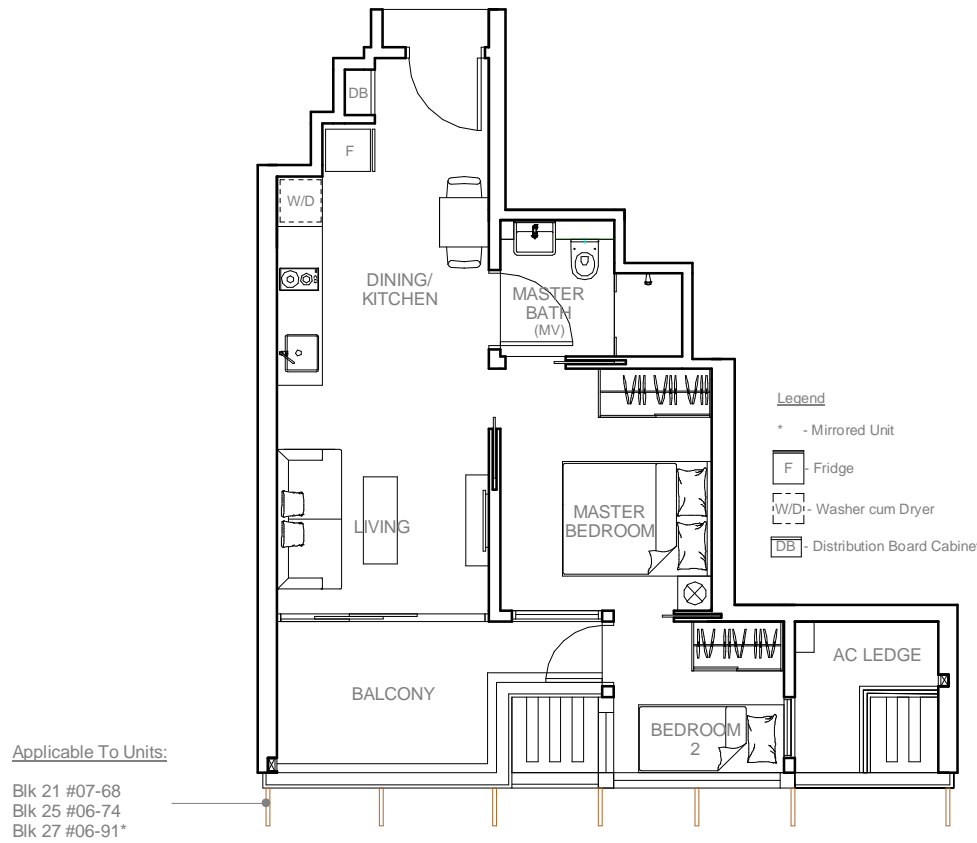
ALL PLANS SUBJECTED TO CHANGES BY THE RELEVANT AUTHORITIES. MEASUREMENTS ARE APPROXIMATE ONLY AND SUBJECT TO FINAL SURVEY. INFORMATION ACCURATE AS OF 02.10.2014



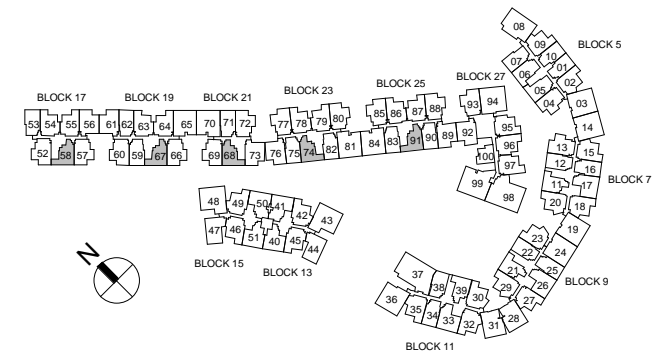
# Type B3 (2-Bedroom)

**Area:** 592 ft<sup>2</sup> / 55 m<sup>2</sup>  
(inclusive of 9 m<sup>2</sup> Balcony & 4 m<sup>2</sup> A/C Ledge)

**Units:** Blk 17, #03-58, #04-58\*  
Blk 19, #03-67 To #06-67\*  
Blk 21, #02-68 To #07-68  
Blk 23, #02-74 To #06-74  
Blk 25, #02-91 To #06-91\*



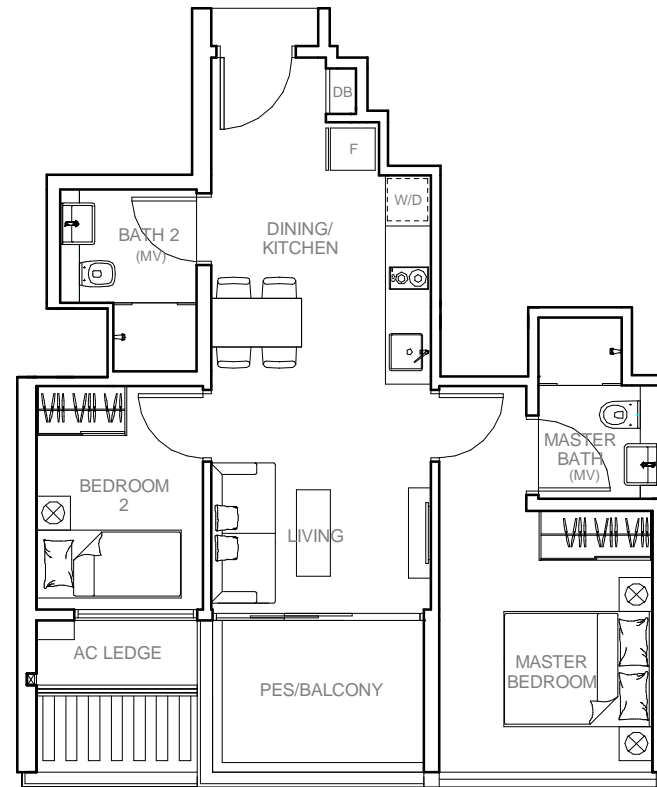
ALL PLANS SUBJECTED TO CHANGES BY THE RELEVANT AUTHORITIES. MEASUREMENTS ARE APPROXIMATE ONLY AND SUBJECT TO FINAL SURVEY. INFORMATION ACCURATE AS OF 02.10.2014



# Type B4 (2-Bedroom)

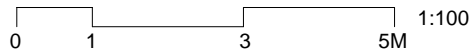
**Area:** 667 ft<sup>2</sup> / 62 m<sup>2</sup>  
(inclusive of 7 m<sup>2</sup> Pes / Balcony & 3 m<sup>2</sup> A/C Ledge)

**Units:** Blk 13, #01-40 (Pes)  
#02-40 To #04-40  
Blk 15, #01-51 (Pes)\*  
#02-51 To #04-51\*

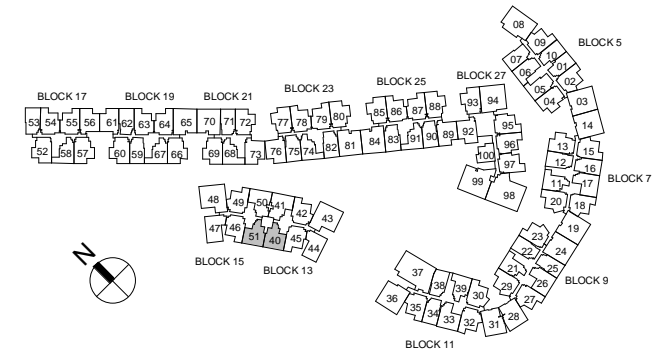


**Legend**

- \* - Mirrored Unit
- F - Fridge
- W/D - Washer cum Dryer
- DB - Distribution Board Cabinet



ALL PLANS SUBJECTED TO CHANGES BY THE RELEVANT AUTHORITIES. MEASUREMENTS ARE APPROXIMATE ONLY AND SUBJECT TO FINAL SURVEY. INFORMATION ACCURATE AS OF 02.10.2014

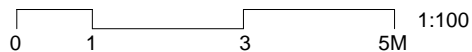
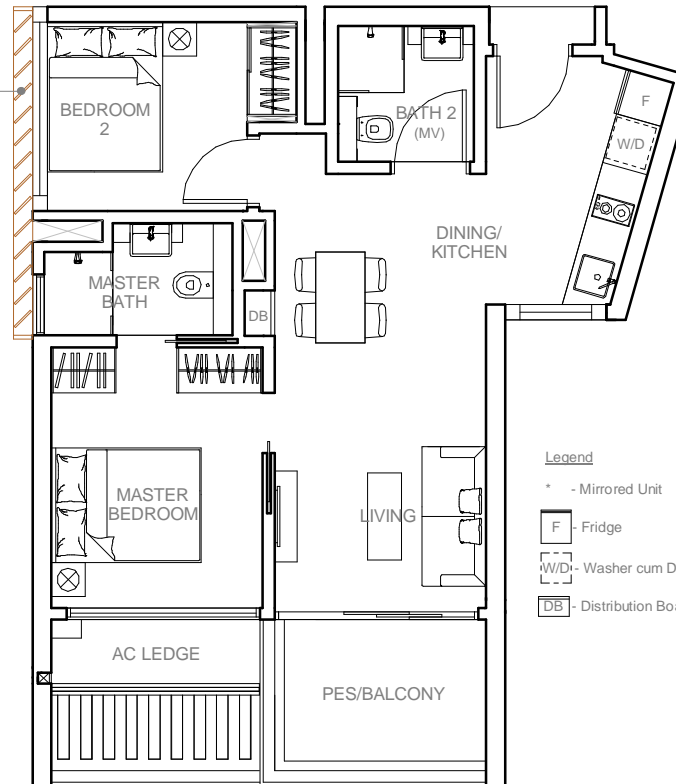


# Type B5 (2-Bedroom)

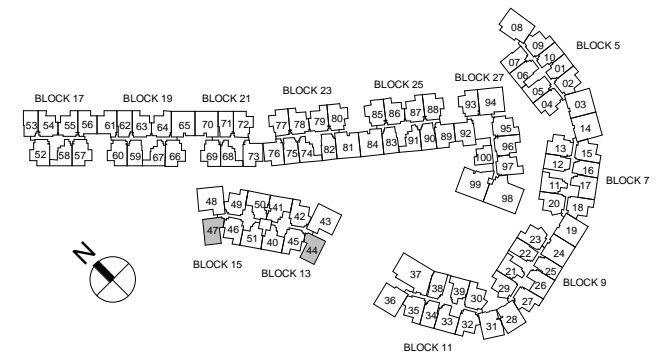
**Area:** 700 ft<sup>2</sup> / 65 m<sup>2</sup>  
(inclusive of 7 m<sup>2</sup> Pes / Balcony & 3 m<sup>2</sup> A/C Ledge)

**Units:** Blk 13, #01-44 (Pes)\*  
#02-44 To #04-44\*  
Blk 15, #01-47 (Pes)  
#02-47 To #04-47

Applicable To Units:  
Blk 15 #03-47 & #04-47



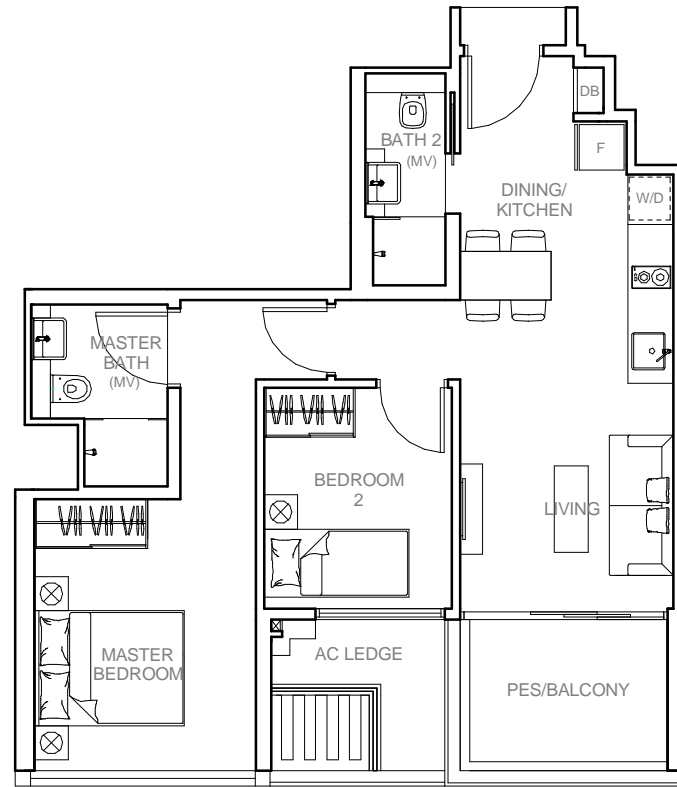
ALL PLANS SUBJECTED TO CHANGES BY THE RELEVANT AUTHORITIES. MEASUREMENTS ARE APPROXIMATE ONLY AND SUBJECT TO FINAL SURVEY. INFORMATION ACCURATE AS OF 02.10.2014



# Type B6 (2-Bedroom)

**Area:** 721 ft<sup>2</sup> / 67 m<sup>2</sup>  
(inclusive of 7 m<sup>2</sup> Pes / Balcony & 4 m<sup>2</sup> A/C Ledge)

**Units:** Blk 7, #01-17(Pes)  
#02-17 To #04-17  
Blk 9, #01-26 (Pes)  
#02-26 To #04-26  
Blk 11, #01-33 (Pes)\*  
#02-33 To #04-33\*



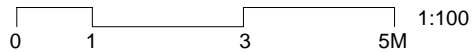
**Legend**

\* - Mirrored Unit

F - Fridge

W/D - Washer cum Dryer

DB - Distribution Board Cabinet



ALL PLANS SUBJECTED TO CHANGES BY THE RELEVANT AUTHORITIES. MEASUREMENTS ARE APPROXIMATE ONLY AND SUBJECT TO FINAL SURVEY. INFORMATION ACCURATE AS OF 02.10.2014

