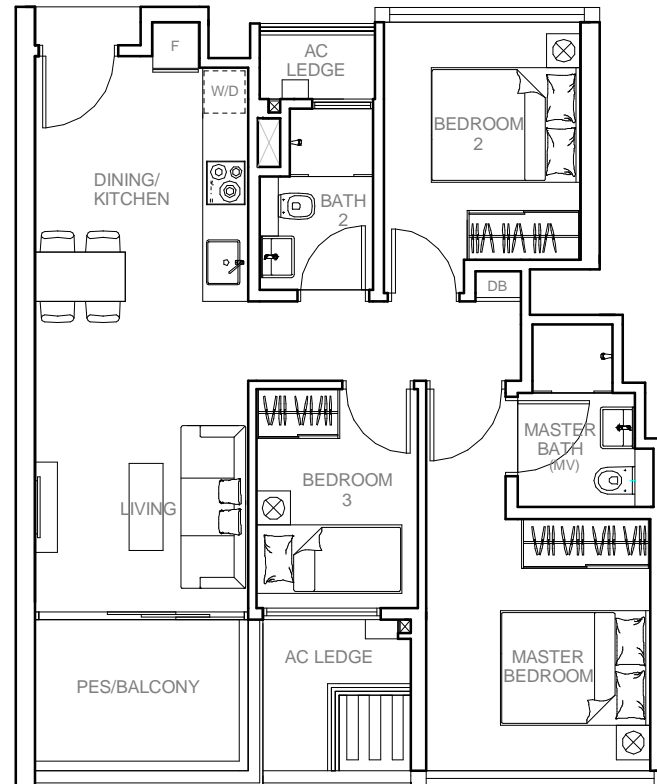


# Type C1 (3-Bedroom)

**Area:** 850 ft<sup>2</sup> / 79 m<sup>2</sup>  
 (inclusive of 7 m<sup>2</sup> Pes / Balcony & 5 m<sup>2</sup> A/C Ledge)

**Units:** Blk 9, #01-28 (Pes)\*  
 #02-28 To #04-28\*  
 Blk 11, #01-31 (Pes)  
 #02-31 To #04-31



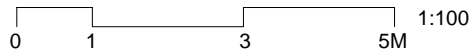
**Legend**

\* - Mirrored Unit

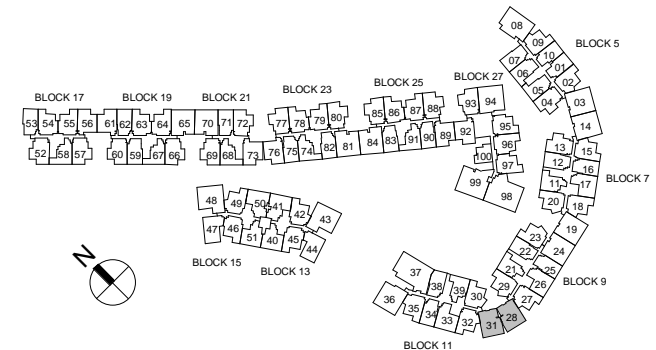
F - Fridge

W/D - Washer cum Dryer

DB - Distribution Board Cabinet



ALL PLANS SUBJECTED TO CHANGES BY THE RELEVANT AUTHORITIES. MEASUREMENTS ARE APPROXIMATE ONLY AND SUBJECT TO FINAL SURVEY. INFORMATION ACCURATE AS OF 02.10.2014



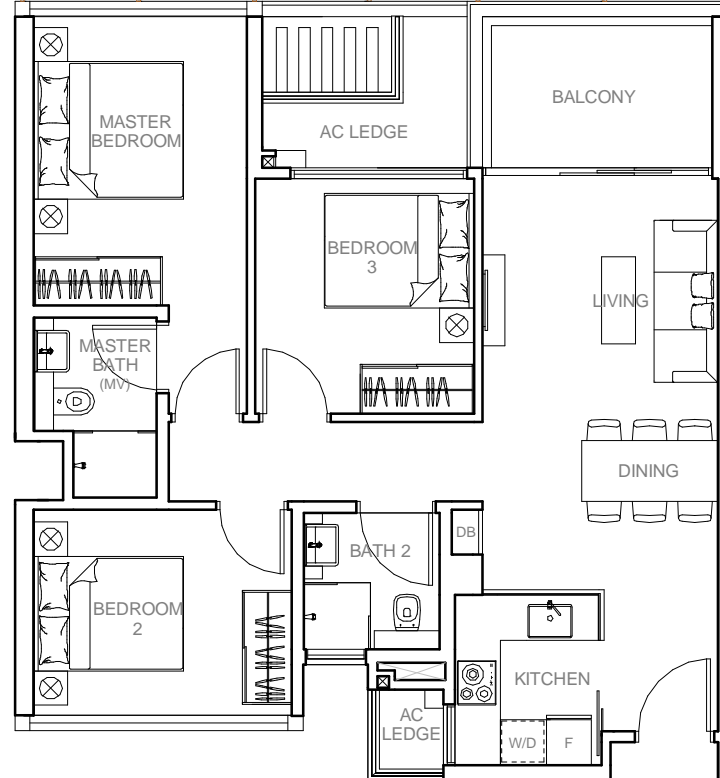
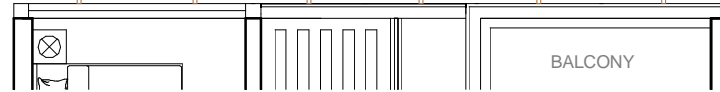
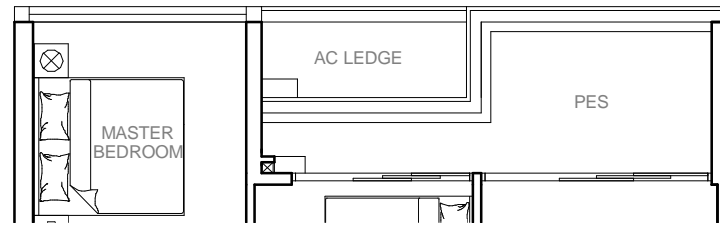
## TYPE C2-G

Applicable To Units:

Blk 21 #06-70  
Blk 23 #05-81  
Blk 25 #05-84\*

Applicable To Units:

Blk 19 #06-65\*  
Blk 21 #05-70 & #07-70  
Blk 23 #06-81  
Blk 25 #06-84\*



## TYPE C2

## Type C2-G (3-Bedroom)

**Area:** 980 ft<sup>2</sup> / 91 m<sup>2</sup>  
(inclusive of 11 m<sup>2</sup> Pes & 5 m<sup>2</sup> A/C Ledge)

**Units:** Blk 19, #01-65\*  
Blk 21, #01-70  
Blk 23, #01-81  
Blk 25, #01-84\*

## Type C2 (3-Bedroom)

**Area:** 958 ft<sup>2</sup> / 89 m<sup>2</sup>  
(inclusive of 8 m<sup>2</sup> Balcony & 6 m<sup>2</sup> A/C Ledge)

**Units:** Blk 19, #02-65 To #06-65\*  
Blk 21, #02-70 To #07-70  
Blk 23, #02-81 To #06-81  
Blk 25, #02-84 To #06-84\*

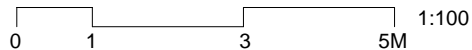
### Legend

\* - Mirrored Unit

F - Fridge

W/D - Washer cum Dryer

DB - Distribution Board Cabinet



ALL PLANS SUBJECTED TO CHANGES BY THE RELEVANT AUTHORITIES. MEASUREMENTS ARE APPROXIMATE ONLY AND SUBJECT TO FINAL SURVEY. INFORMATION ACCURATE AS OF 02.10.2014

