

NOW A LANDMARK
FOR THOSE WHO
LIVE WITH FORESIGHT

OFFICIAL MARKETING AGENCY

Huttons[®]
The Agency of Choice

Discover an abode that stands on the frontier of luxury living, made possible by visionary architect and founder of Rotterdam-based KCAP Architects&Planners, Kees Christiaanse. Like a series of urban sculptures, The Reef at King's Dock, with its 10 residential blocks, creates an exclusive, tranquil environment within the vibrant Greater Southern Waterfront, right on the edge of the upcoming Sentosa-Brani district.

[show gallery 61002500.](#) [show gallery 61002500.](#) [show gallery 61002500.](#)

OFFICIAL MARKETING AGENCY

Huttons[®]
The Agency of Choice

A HOME FIT FOR YOU

[show gallery 61002500.](#) [show gallery 61002500.](#) [show gallery 61002500.](#)

FLOORPLANS

1-BEDROOM



UNIT DISTRIBUTION

 1-BEDROOM	 2-BEDROOM	 3-BEDROOM + STUDY
 1-BEDROOM + STUDY	 2-BEDROOM + STUDY	 3-BEDROOM PREMIUM
	 2-BEDROOM PREMIUM	 3-BEDROOM VILLA
	 2-BEDROOM VILLA	

BLOCK 2

UNIT FLR	1	2
02	CV1-L	CV1-L
01	CV1-P	CV1-P

BLOCK 6

UNIT FLR	3	4	5	6	7	8	9	10
08	B5	B5	B4	A2	CP2	CP2	A2	B6
07	B5	B5	B4	A2	CP2	CP2	A2	B6
06	B5	B5	B4	A2	CP2	CP2	A2	B6
05	B5	B5	B4	A2	CP2	CP2	A2	B6
04	B5	B5	B4	A2	CP2	CP2	A2	B6
03	B5	B5	B4	A2	CP2	CP2	A2	B6
02	B5	B5	B4	BS1			BS1	B6
01	B5-P	B5-P	B4-P	BS1-P			BS1-P	B6-P

BLOCK 8

UNIT FLR	11	12
02	CV1-L	CV1-L
01	CV1-P	CV1-P

BLOCK 16

UNIT FLR	37	38	39	40	41	42	43	44
08	B5	B5	B4	A2	BP1	BP1	A2	B6
07	B5	B5	B4	A2	BP1	BP1	A2	B6
06	B5	B5	B4	A2	BP1	BP1	A2	B6
05	B5	B5	B4	A2	BP1	BP1	A2	B6
04	B5	B5	B4	A2	BP1	BP1	A2	B6
03	B5	B5	B4	A3			A3	B6
02	B5	B5	B4	A3			A3	B6
01			B4-P	A3-P			A4-P	B6-P

BLOCK 18

UNIT FLR	45	46
03	BV1-L	BV1-L
02	BV1	BV1
01	BV1a-P	BV1-P

show gallery 61002500. show gallery 61002500. show gallery 61002500.

BLOCK 10

UNIT FLR	13	14	15	16	17	18	19	20	21	22	23	24	25	26
	ROOF GARDEN													
10	CS1	CP1	B1a	B2a	A1j	A1a	A1h	A1c	A1g	B3	B2	B1	CP1	CS1
09	CS1	CP1	B1a	B2a	A1f	A1h	A1e	A1h	A1b	B3	B2	B1	CP1	CS1
08	SKY TERRACE		B1a	B2a	A1j	A1a	A1h	A1c	A1g	B3	B2	B1	CP1	CS1
07			B1a	B2a	A1f	A1h	A1e	A1h	A1b	B3	B2	B1	CP1	CS1
06			B1a	B2a	A1j	A1a	A1h	A1c	A1g	B3	B2	B1	CP1	CS1
05	CS1	CP1	B1a	B2a	SKY TERRACE			A1h	A1b	B3	B2	B1	CP1	CS1
04	CS1	CP1	B1a	B2a				A1c	A1g	B3	B2	B1	CP1	CS1
03	CS1	CP1	B1a	B2a				A1h	A1b	B3	B2	B1	CP1	CS1
02	CS1	CP1	B1a	B2a	A1j	A1a	A1h	A1c	A1g	B3	B2	B1		
01	CS1-P	CP1-P	B1a	B2a	A1f-P	A1h	A1e-P	A1h	A1b-P	B3a-P	B2-P	B1-P		

BLOCK 20

UNIT FLR	47	48	49	50	51	52	53	54	55	56	57	58	59	60
05	CS1-L	CP1-L	B1	B2	B3	A1d	A1	A1-L	A1e-L	A1f-L	B2	B1	CP1-L	CS1-L
04	CS1	CP1	B1	B2	B3	A1d	A1	A1	A1e	A1f	B2	B1	CP1	CS1
03	CS1	CP1	B1	B2	B3	A1d	A1	A1	A1e	A1f	B2	B1	CP1	CS1
02	CS1	CP1	B1	B2	B3	A1d	A1				B2b	B1	CP1	CS1
01	CS1-P	CP1-P	B1-P	B2-P	B3-P	A1d-P	A1e-P				B2b-P	B1-P	CP1-P	CS1-P

BLOCK 12

UNIT FLR	27	28	29	30	31	32	33	34
08	B5	B5	B4	A2	BP1	BP1	A2	B6
07	B5	B5	B4	A2	BP1	BP1	A2	B6
06	B5	B5	B4	A2	BP1	BP1	A2	B6
05	B5	B5	B4	A2	BP1	BP1	A2	B6
04	B5	B5	B4	A2	BP1	BP1	A2	B6
03	B5	B5	B4	A3			A3	B6
02	B5	B5	B4	A3			A3	B6
01			B4-P	A3-P			A4-P	B6-P

BLOCK 14

UNIT FLR	35	36
03	BV1-L	BV1-L
02	BV1	BV1
01	BV1a-P	BV1-P

BLOCK 22

UNIT FLR	61	62	63	64	65	66	67	68
07	B5	B5	B4	A2	CP2	CP2	A2	B6
06	B5	B5	B4	A2	CP2	CP2	A2	B6
05	B5	B5	B4	A2	CP2	CP2	A2	B6
04	B5	B5	B4	A2	CP2	CP2	A2	B6
03	B5	B5	B4	A2	CP2	CP2	A2	B6
02	B5	B5	B4	BS1			BS1	B6
01	B5-P	B5-P	B4-P	BS1-P			AS1-P	B6-P

OFFICIAL MARKETING AGENCY



1-BEDROOM

TYPE A1

45 SQM / 484 SQFT

BLK 20

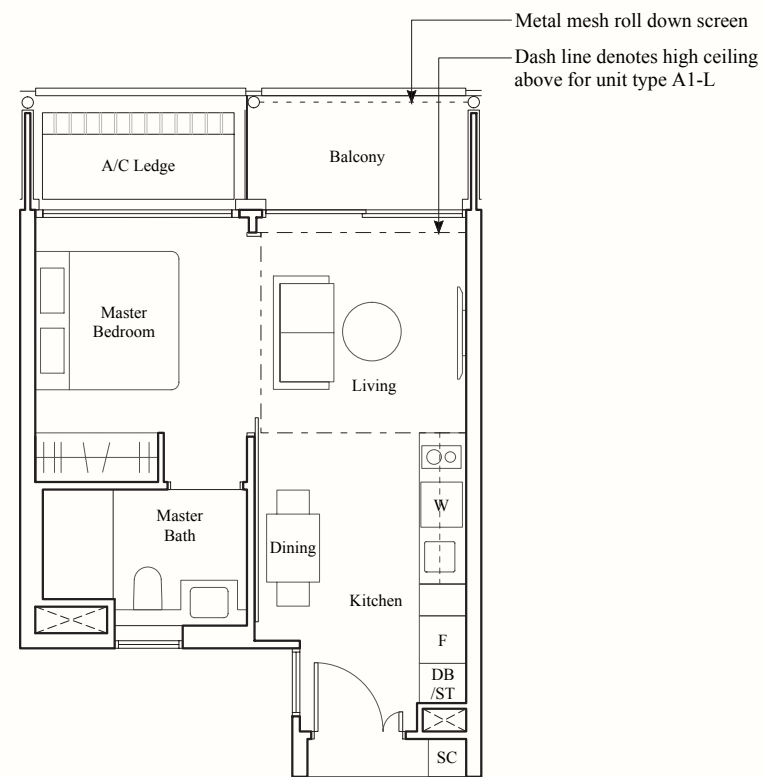
#02-53* to #05-53*
#03-54 to #04-54

TYPE A1-L

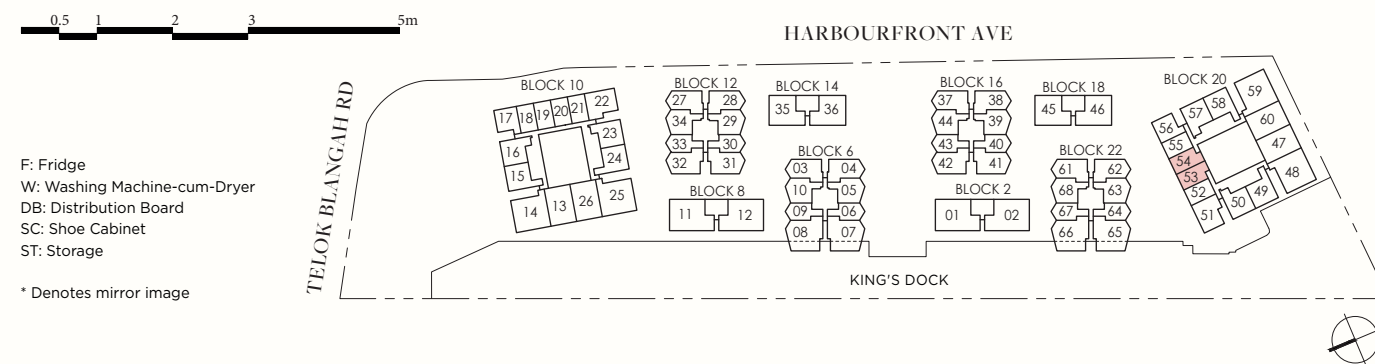
53 SQM / 570 SQFT

BLK 20

#05-54



show gallery 61002500. show gallery 61002500. show gallery 61002500.



AREA INCLUDES AIR-CON (A/C) LEDGE, BALCONY, PRIVATE ENCLOSED SPACE (PES) AND STRATA VOID AREA WHERE APPLICABLE. SOME UNITS ARE MIRROR IMAGES OF THE PLAN SHOWN IN THE BROCHURE. PLEASE REFER TO THE KEY PLAN FOR ORIENTATION. THE PLANS ARE SUBJECT TO CHANGE AS MAY BE REQUIRED BY THE RELEVANT AUTHORITIES. ALL MEASUREMENTS ARE APPROXIMATE ONLY AND ARE SUBJECT TO GOVERNMENT RE-SURVEY. THE BALCONY SHALL NOT BE ENCLOSED UNLESS WITH THE APPROVED BALCONY SCREEN.

1-BEDROOM

TYPE A1a

45 SQM / 484 SQFT

BLK 10

#02-18
#06-18
#08-18
#10-18

TYPE A1b

45 SQM / 484 SQFT

BLK 10

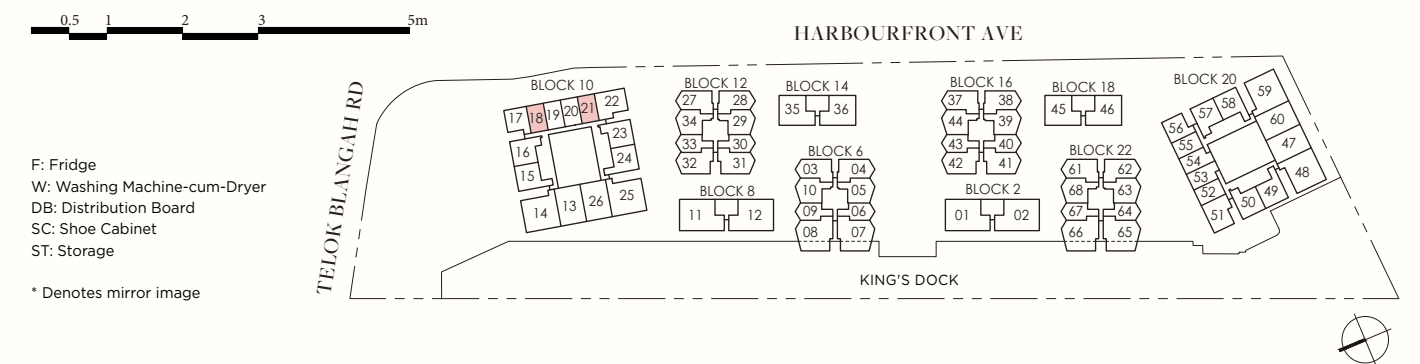
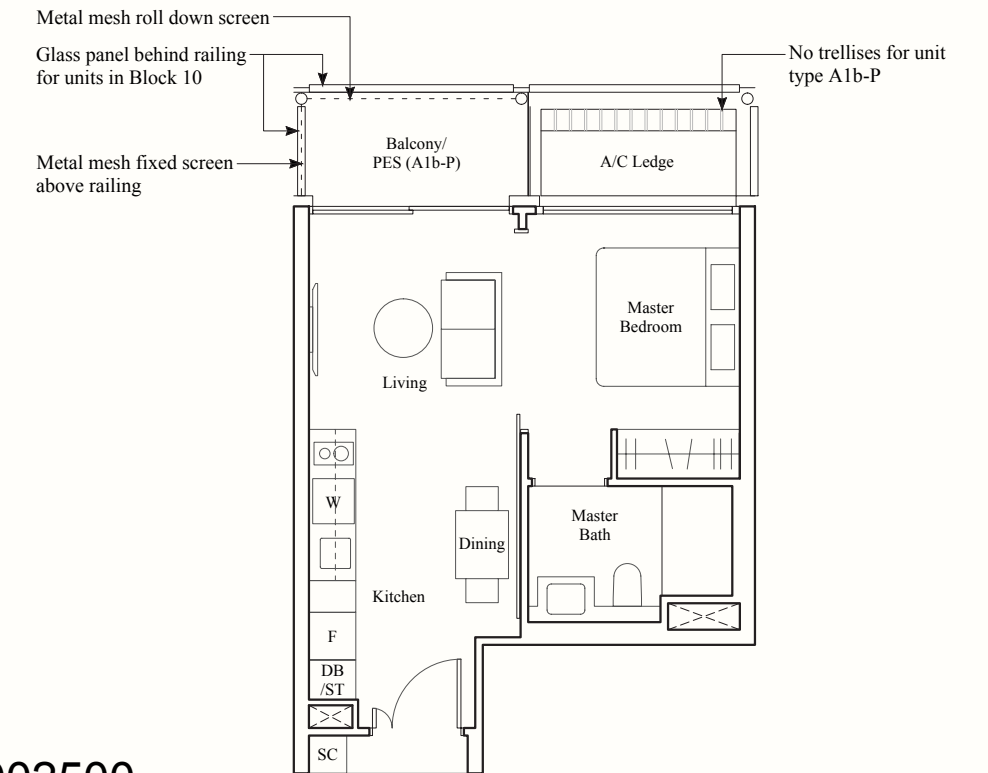
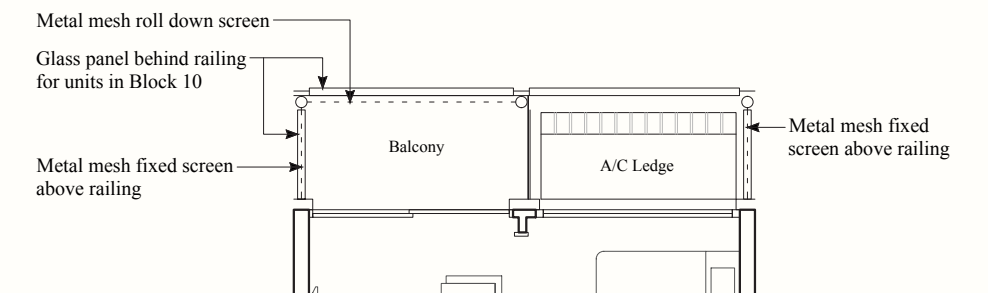
#03-21
#05-21
#07-21
#09-21

TYPE A1b-P

45 SQM / 484 SQFT

BLK 10

#01-21

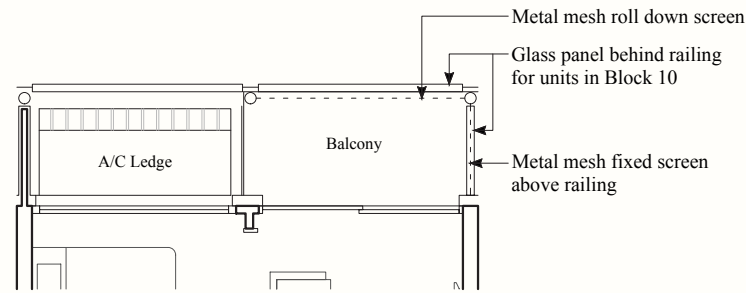


AREA INCLUDES AIR-CON (A/C) LEDGE, BALCONY, PRIVATE ENCLOSED SPACE (PES) AND STRATA VOID AREA WHERE APPLICABLE. SOME UNITS ARE MIRROR IMAGES OF THE PLAN SHOWN IN THE BROCHURE. PLEASE REFER TO THE KEY PLAN FOR ORIENTATION. THE PLANS ARE SUBJECT TO CHANGE AS MAY BE REQUIRED BY THE RELEVANT AUTHORITIES. ALL MEASUREMENTS ARE APPROXIMATE ONLY AND ARE SUBJECT TO GOVERNMENT RE-SURVEY. THE BALCONY SHALL NOT BE ENCLOSED UNLESS WITH THE APPROVED BALCONY SCREEN.

1-BEDROOM

TYPE A1c
45 SQM / 484 SQFT

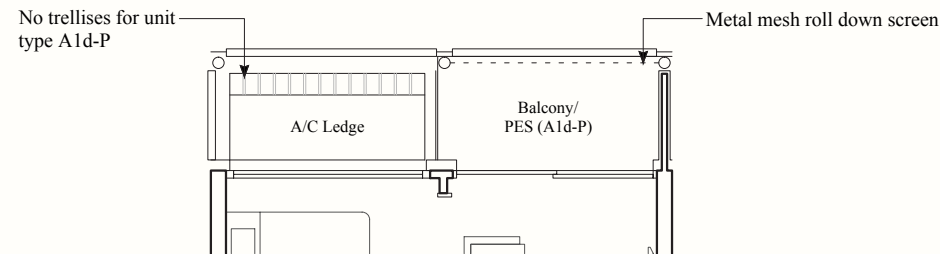
BLK 10
#02-20 #08-20
#04-20 #10-20
#06-20



TYPE A1d
45 SQM / 484 SQFT

BLK 20
#02-52 to #05-52

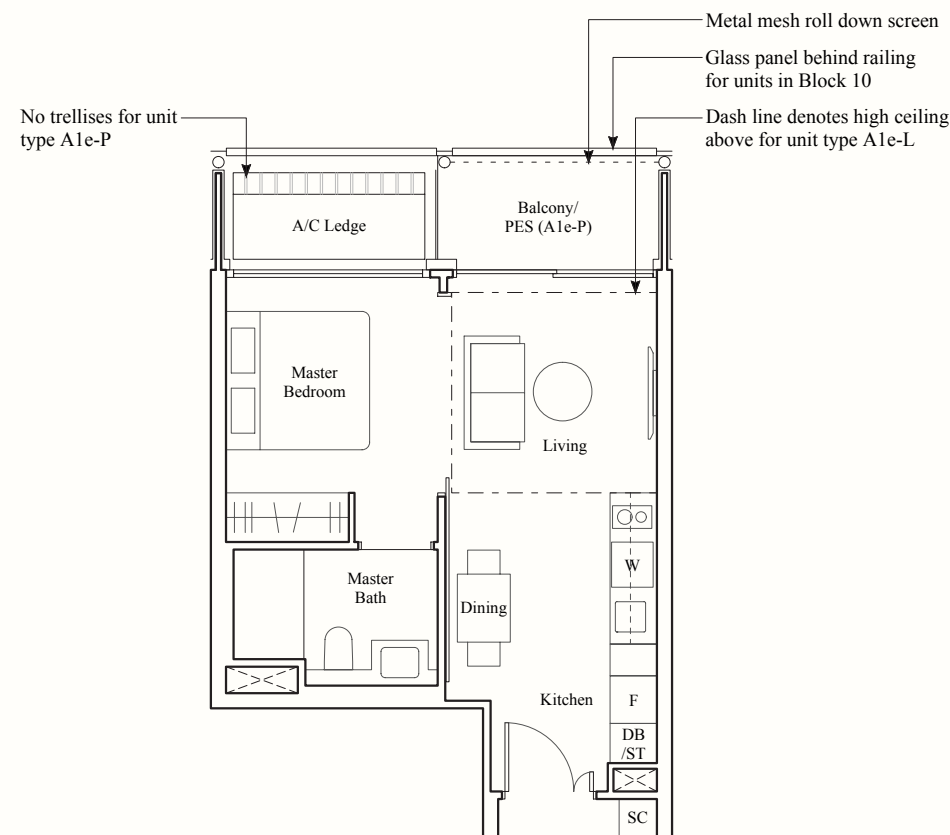
TYPE A1d-P
45 SQM / 484 SQFT



BLK 20
#01-52

TYPE A1e
45 SQM / 484 SQFT

BLK 10 **BLK 20**
#07-19* #03-55
#09-19* #04-55



TYPE A1e-P
45 SQM / 484 SQFT

BLK 10 **BLK 20**
#01-19* #01-53*

TYPE A1e-L
53 SQM / 570 SQFT

BLK 20
#05-55

1-BEDROOM

TYPE A1f
45 SQM / 484 SQFT

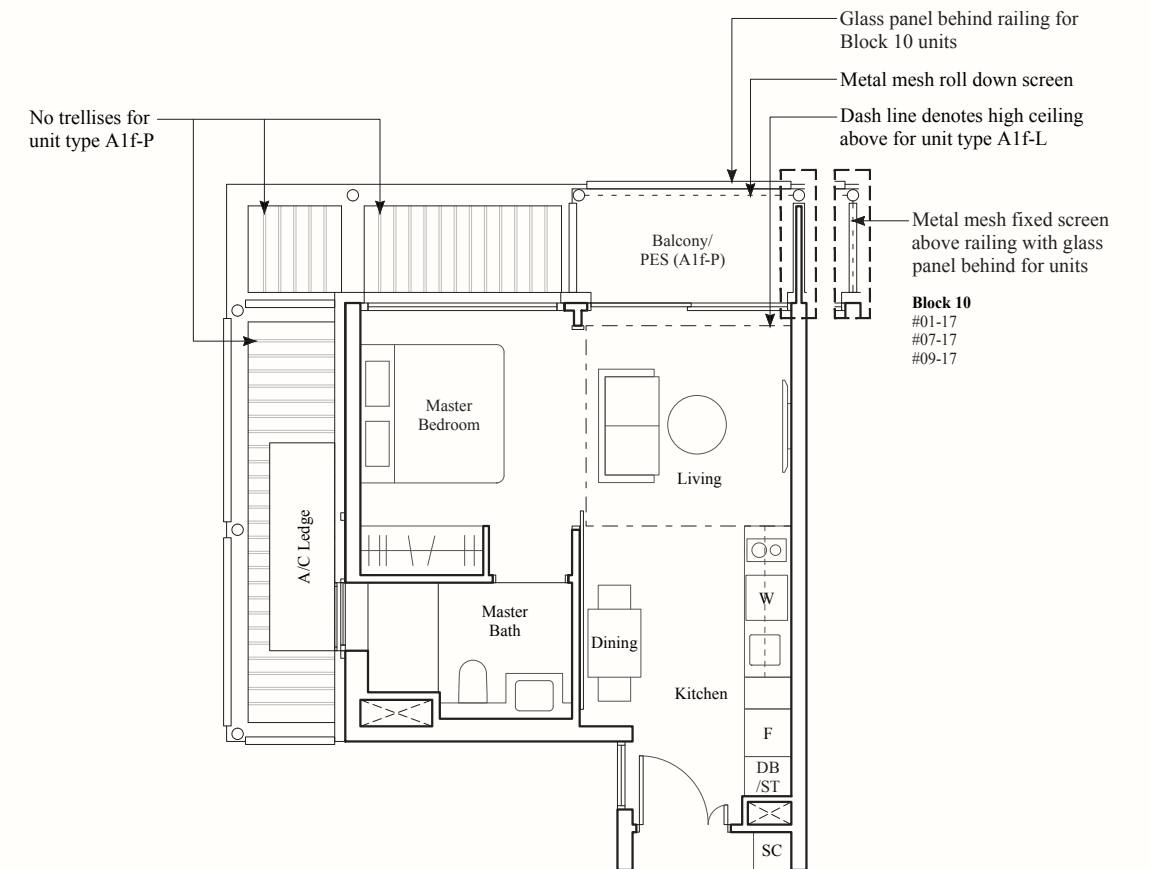
BLK 10 **BLK 20**
#07-17 #03-56*
#09-17 #04-56*

TYPE A1f-P
45 SQM / 484 SQFT

BLK 10
#01-17

TYPE A1f-L
53 SQM / 570 SQFT

BLK 20
#05-56*

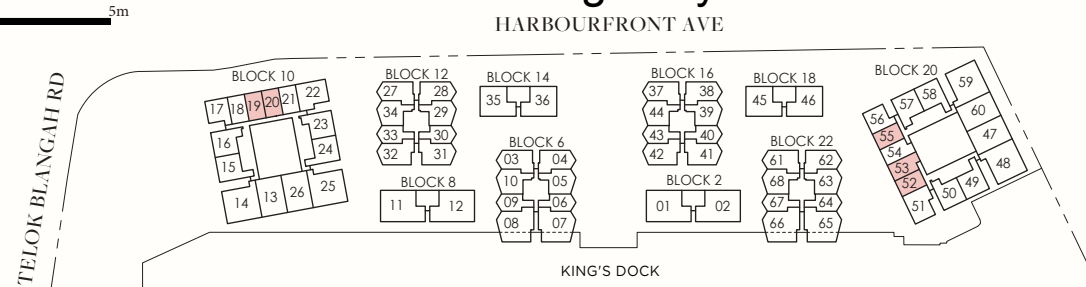


show gallery 61002500. show gallery 61002500. show gallery 61002500.



F: Fridge
W: Washing Machine-cum-Dryer
DB: Distribution Board
SC: Shoe Cabinet
ST: Storage

* Denotes mirror image

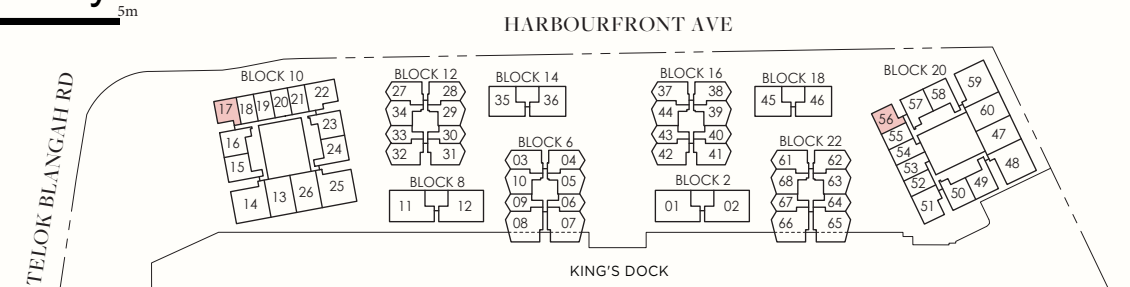


AREA INCLUDES AIR-CON (A/C) LEDGE, BALCONY, PRIVATE ENCLOSED SPACE (PES) AND STRATA VOID AREA WHERE APPLICABLE. SOME UNITS ARE MIRROR IMAGES OF THE PLAN SHOWN IN THE BROCHURE. PLEASE REFER TO THE KEY PLAN FOR ORIENTATION. THE PLANS ARE SUBJECT TO CHANGE AS MAY BE REQUIRED BY THE RELEVANT AUTHORITIES. ALL MEASUREMENTS ARE APPROXIMATE ONLY AND ARE SUBJECT TO GOVERNMENT RE-SURVEY. THE BALCONY SHALL NOT BE ENCLOSED UNLESS WITH THE APPROVED BALCONY SCREEN.



F: Fridge
W: Washing Machine-cum-Dryer
DB: Distribution Board
SC: Shoe Cabinet
ST: Storage

* Denotes mirror image



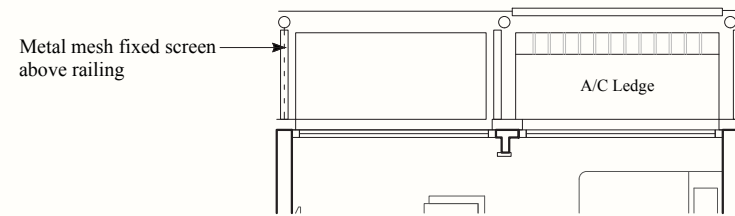
AREA INCLUDES AIR-CON (A/C) LEDGE, BALCONY, PRIVATE ENCLOSED SPACE (PES) AND STRATA VOID AREA WHERE APPLICABLE. SOME UNITS ARE MIRROR IMAGES OF THE PLAN SHOWN IN THE BROCHURE. PLEASE REFER TO THE KEY PLAN FOR ORIENTATION. THE PLANS ARE SUBJECT TO CHANGE AS MAY BE REQUIRED BY THE RELEVANT AUTHORITIES. ALL MEASUREMENTS ARE APPROXIMATE ONLY AND ARE SUBJECT TO GOVERNMENT RE-SURVEY. THE BALCONY SHALL NOT BE ENCLOSED UNLESS WITH THE APPROVED BALCONY SCREEN.

1-BEDROOM

TYPE A1g 40 SQM / 431 SQFT

BLK 10

- #02-21
- #04-21
- #06-21
- #08-21
- #10-21



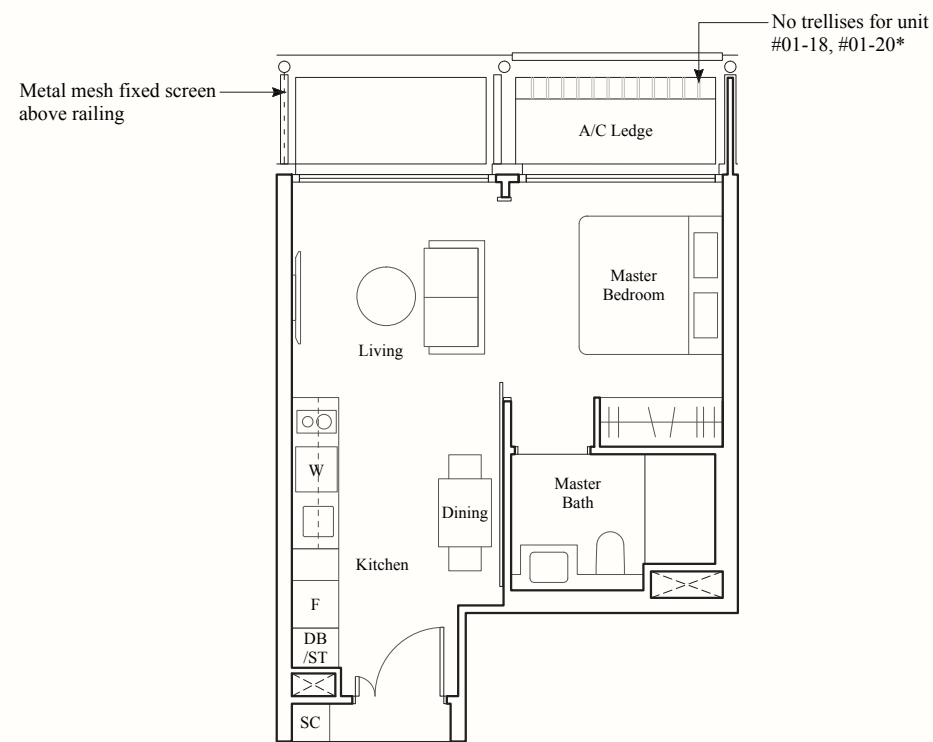
TYPE A1h 40 SQM / 431 SQFT

BLK 10

- #01-18
- #07-18
- #09-18

- #02-19
- #06-19
- #08-19
- #10-19

- #01-20*
- #03-20*
- #05-20*
- #07-20*
- #09-20*

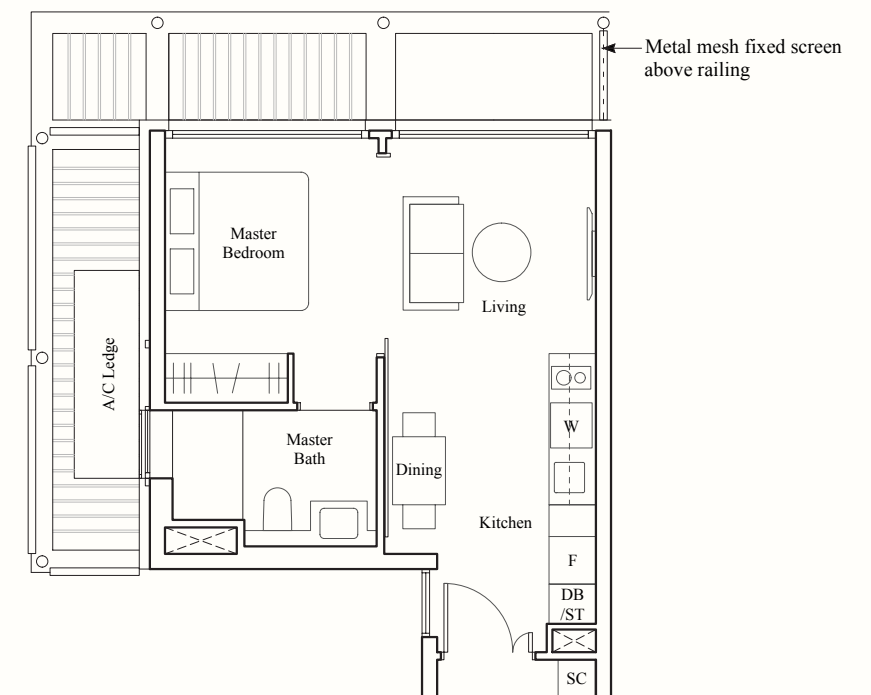


1-BEDROOM

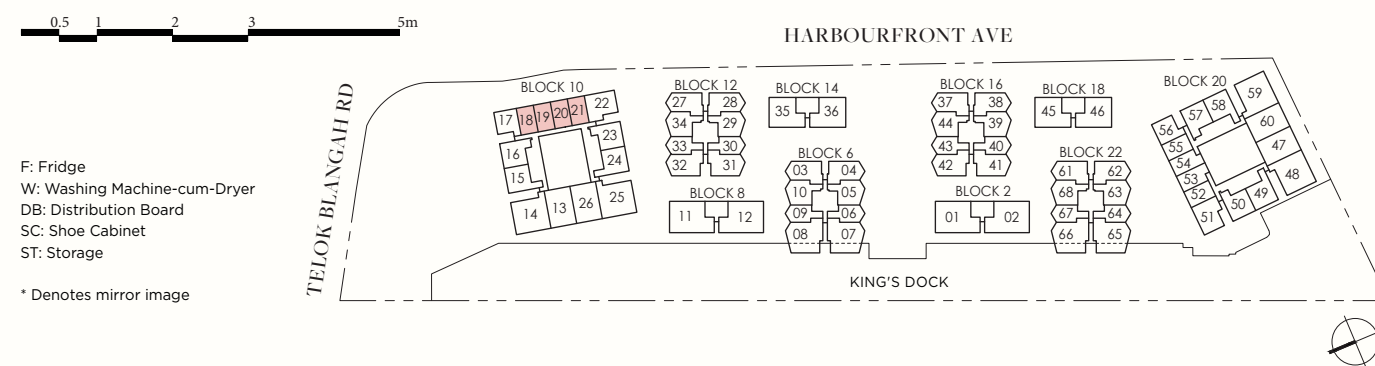
TYPE A1j 40 SQM / 431 SQFT

BLK 10

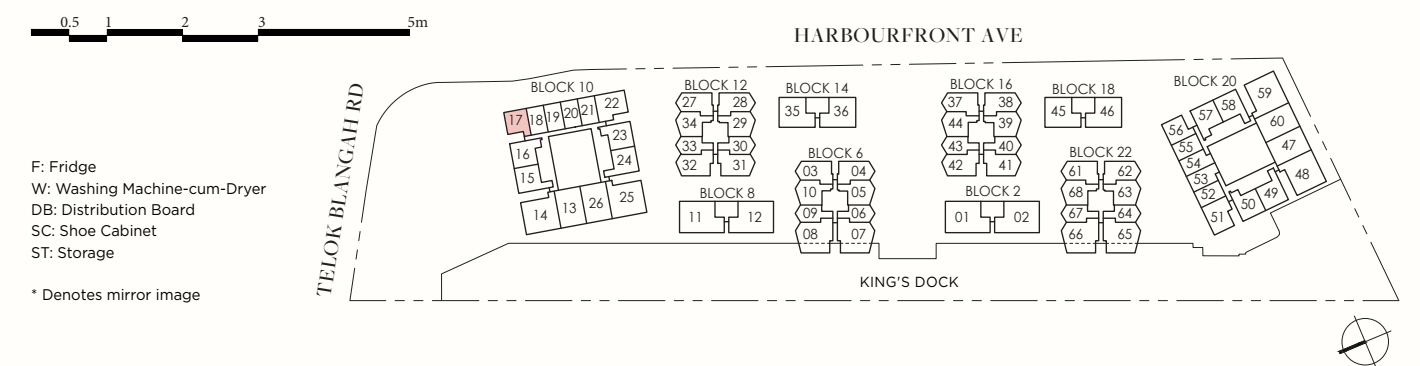
- #02-17
- #06-17
- #08-17
- #10-17



show gallery 61002500. show gallery 61002500. show gallery 61002500.



AREA INCLUDES AIR-CON (A/C) LEDGE, BALCONY, PRIVATE ENCLOSED SPACE (PES) AND STRATA VOID AREA WHERE APPLICABLE. SOME UNITS ARE MIRROR IMAGES OF THE PLAN SHOWN IN THE BROCHURE. PLEASE REFER TO THE KEY PLAN FOR ORIENTATION. THE PLANS ARE SUBJECT TO CHANGE AS MAY BE REQUIRED BY THE RELEVANT AUTHORITIES. ALL MEASUREMENTS ARE APPROXIMATE ONLY AND ARE SUBJECT TO GOVERNMENT RE-SURVEY. THE BALCONY SHALL NOT BE ENCLOSED UNLESS WITH THE APPROVED BALCONY SCREEN.



AREA INCLUDES AIR-CON (A/C) LEDGE, BALCONY, PRIVATE ENCLOSED SPACE (PES) AND STRATA VOID AREA WHERE APPLICABLE. SOME UNITS ARE MIRROR IMAGES OF THE PLAN SHOWN IN THE BROCHURE. PLEASE REFER TO THE KEY PLAN FOR ORIENTATION. THE PLANS ARE SUBJECT TO CHANGE AS MAY BE REQUIRED BY THE RELEVANT AUTHORITIES. ALL MEASUREMENTS ARE APPROXIMATE ONLY AND ARE SUBJECT TO GOVERNMENT RE-SURVEY. THE BALCONY SHALL NOT BE ENCLOSED UNLESS WITH THE APPROVED BALCONY SCREEN.

1-BEDROOM

TYPE A2

50 SQM / 538 SQFT

BLK 6

#03-06 to #08-06
#03-09* to #08-09*

BLK 12

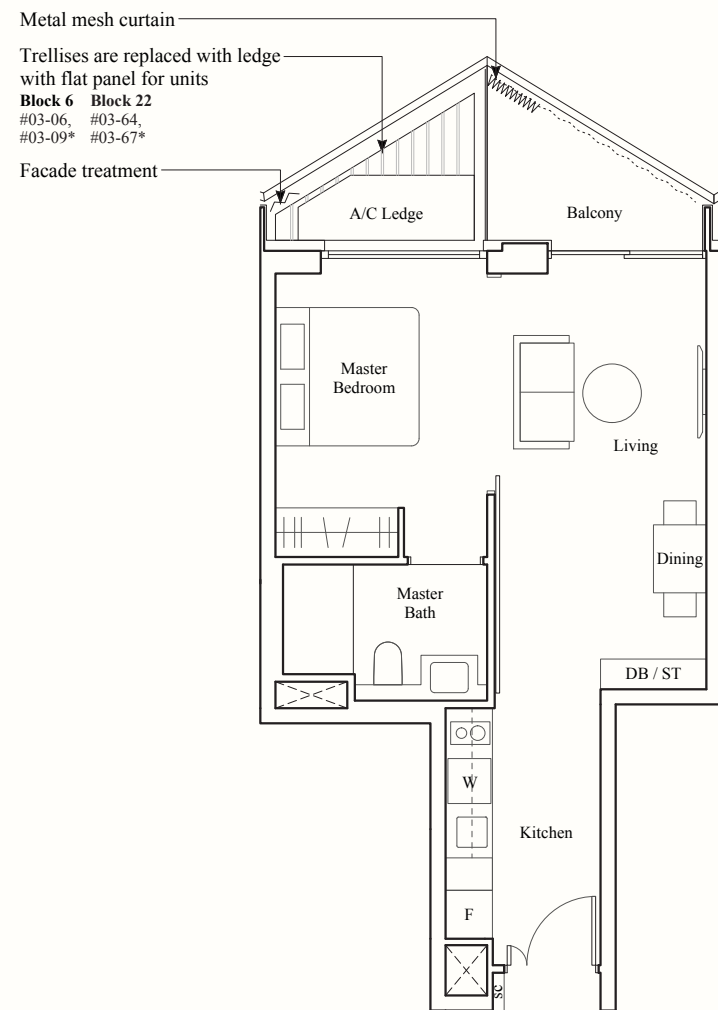
#04-30 to #08-30
#04-33* to #08-33*

BLK 16

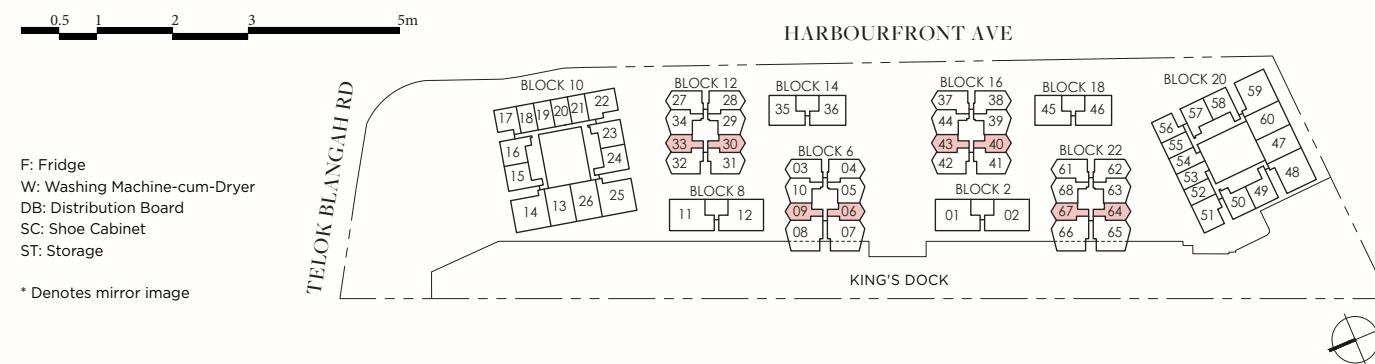
#04-40 to #08-40
#04-43* to #08-43*

BLK 22

#03-64 to #07-64
#03-67* to #07-67*



show gallery 61002500. show gallery 61002500. show gallery 61002500.



AREA INCLUDES AIR-CON (A/C) LEDGE, BALCONY, PRIVATE ENCLOSED SPACE (PES) AND STRATA VOID AREA WHERE APPLICABLE. SOME UNITS ARE MIRROR IMAGES OF THE PLAN SHOWN IN THE BROCHURE. PLEASE REFER TO THE KEY PLAN FOR ORIENTATION. THE PLANS ARE SUBJECT TO CHANGE AS MAY BE REQUIRED BY THE RELEVANT AUTHORITIES. ALL MEASUREMENTS ARE APPROXIMATE ONLY AND ARE SUBJECT TO GOVERNMENT RE-SURVEY. THE BALCONY SHALL NOT BE ENCLOSED UNLESS WITH THE APPROVED BALCONY SCREEN.

1-BEDROOM

TYPE A3

55 SQM / 592 SQFT

BLK 12

#02-30 to #03-30
#02-33* to #03-33*

BLK 16

#02-40 to #03-40
#02-43* to #03-43*

TYPE A3-P

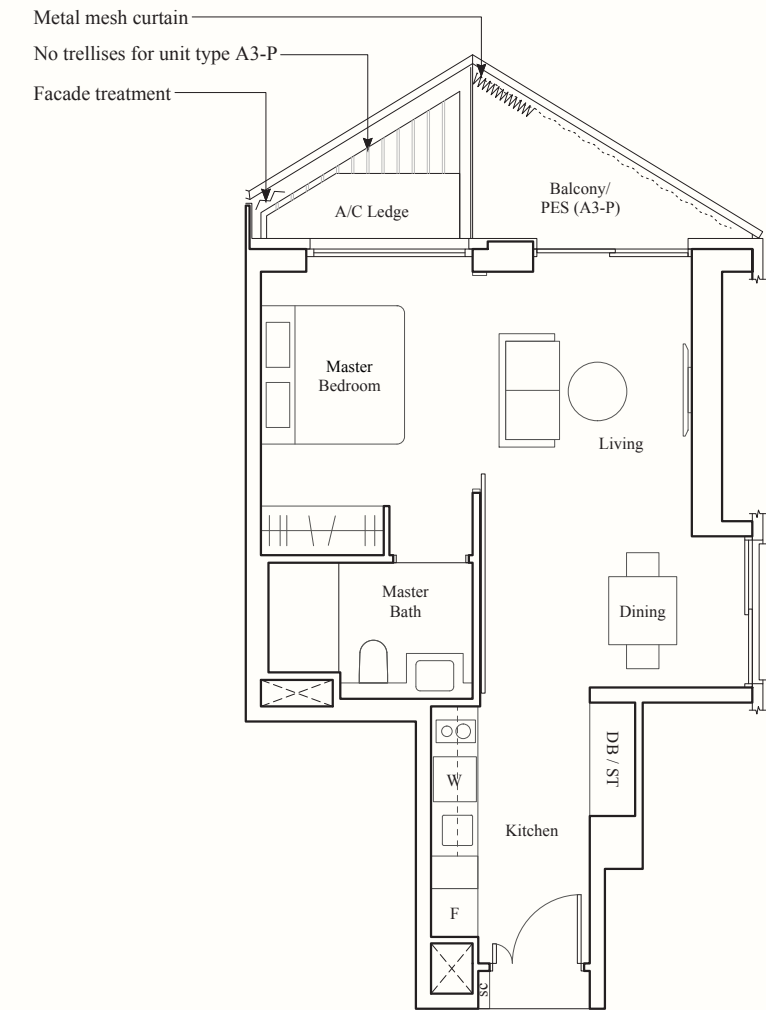
55 SQM / 592 SQFT

BLK 12

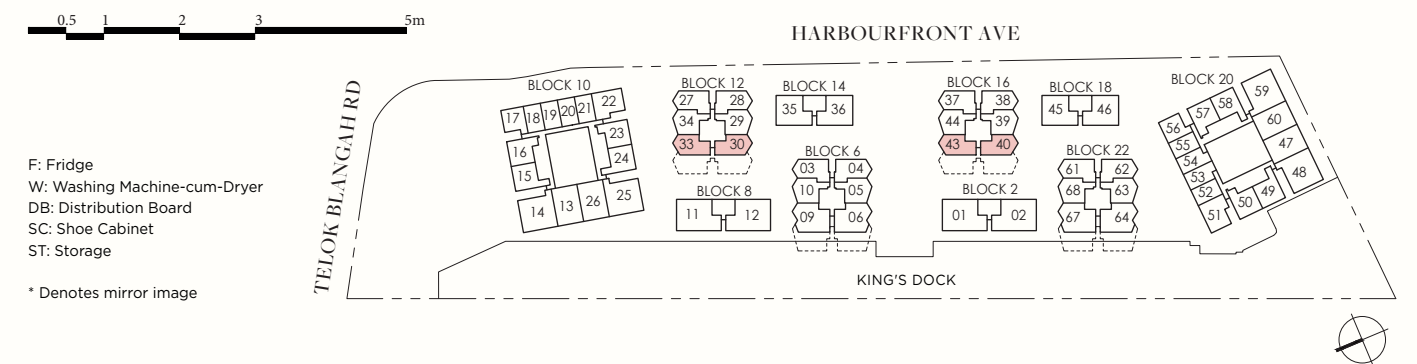
#01-30

BLK 16

#01-40



show gallery 61002500.



AREA INCLUDES AIR-CON (A/C) LEDGE, BALCONY, PRIVATE ENCLOSED SPACE (PES) AND STRATA VOID AREA WHERE APPLICABLE. SOME UNITS ARE MIRROR IMAGES OF THE PLAN SHOWN IN THE BROCHURE. PLEASE REFER TO THE KEY PLAN FOR ORIENTATION. THE PLANS ARE SUBJECT TO CHANGE AS MAY BE REQUIRED BY THE RELEVANT AUTHORITIES. ALL MEASUREMENTS ARE APPROXIMATE ONLY AND ARE SUBJECT TO GOVERNMENT RE-SURVEY. THE BALCONY SHALL NOT BE ENCLOSED UNLESS WITH THE APPROVED BALCONY SCREEN.

1-BEDROOM

TYPE A4-P

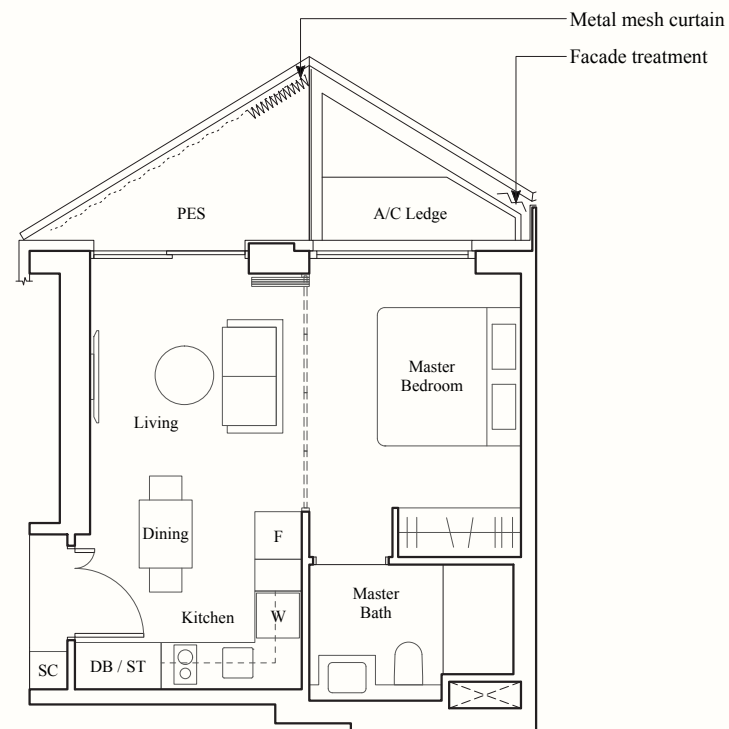
45 SQM / 484 SQFT

BLK 12

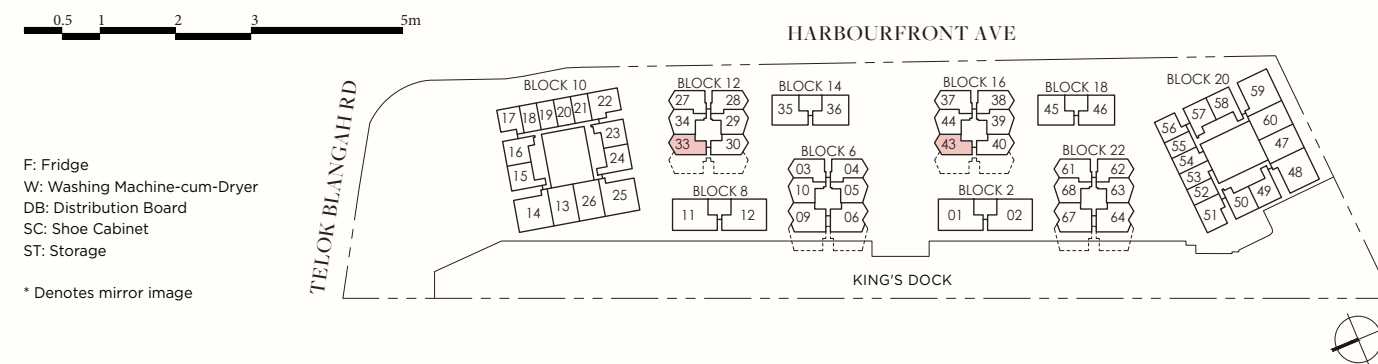
#01-33

BLK 16

#01-43



show gallery 61002500. show gallery 61002500. show gallery 61002500.



AREA INCLUDES AIR-CON (A/C) LEDGE, BALCONY, PRIVATE ENCLOSED SPACE (PES) AND STRATA VOID AREA WHERE APPLICABLE. SOME UNITS ARE MIRROR IMAGES OF THE PLAN SHOWN IN THE BROCHURE. PLEASE REFER TO THE KEY PLAN FOR ORIENTATION. THE PLANS ARE SUBJECT TO CHANGE AS MAY BE REQUIRED BY THE RELEVANT AUTHORITIES. ALL MEASUREMENTS ARE APPROXIMATE ONLY AND ARE SUBJECT TO GOVERNMENT RE-SURVEY. THE BALCONY SHALL NOT BE ENCLOSED UNLESS WITH THE APPROVED BALCONY SCREEN.

1-BEDROOM + STUDY

TYPE AS1-P

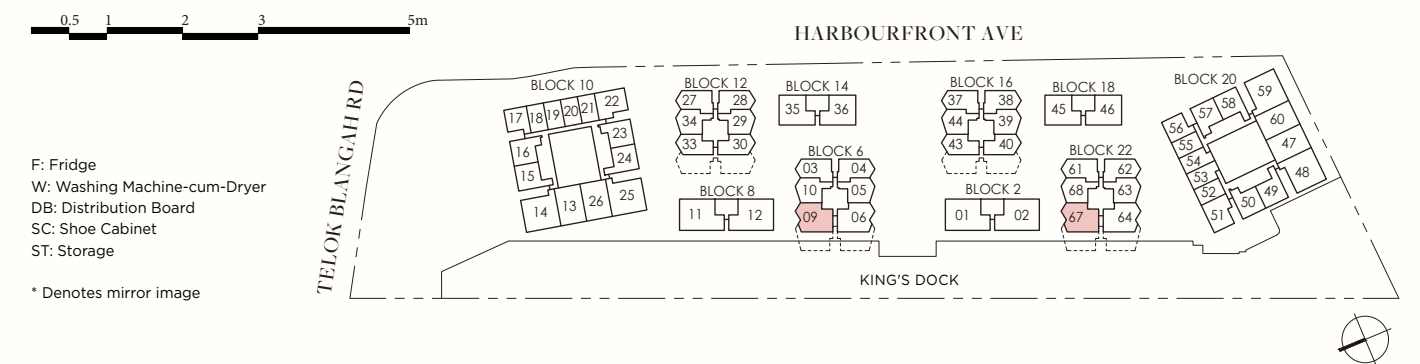
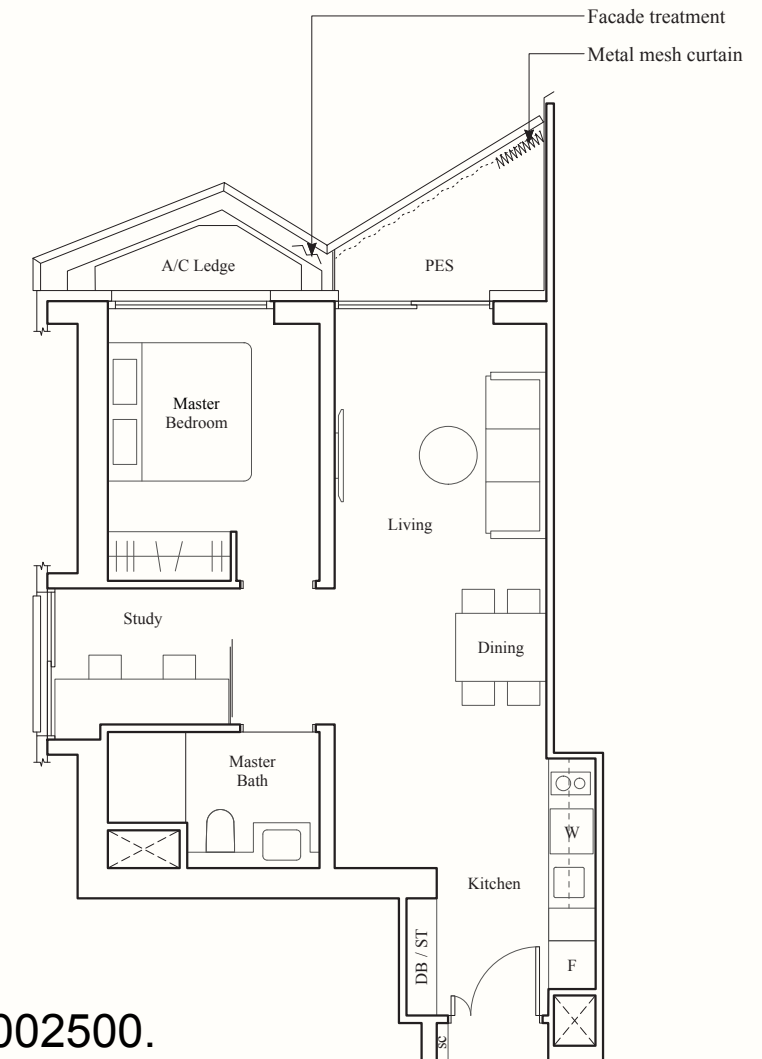
61 SQM / 657 SQFT

BLK 6

#01-09

BLK 22

#01-67



AREA INCLUDES AIR-CON (A/C) LEDGE, BALCONY, PRIVATE ENCLOSED SPACE (PES) AND STRATA VOID AREA WHERE APPLICABLE. SOME UNITS ARE MIRROR IMAGES OF THE PLAN SHOWN IN THE BROCHURE. PLEASE REFER TO THE KEY PLAN FOR ORIENTATION. THE PLANS ARE SUBJECT TO CHANGE AS MAY BE REQUIRED BY THE RELEVANT AUTHORITIES. ALL MEASUREMENTS ARE APPROXIMATE ONLY AND ARE SUBJECT TO GOVERNMENT RE-SURVEY. THE BALCONY SHALL NOT BE ENCLOSED UNLESS WITH THE APPROVED BALCONY SCREEN.

OFFICIAL MARKETING AGENCY

Huttons[®]
The Agency of Choice

A HOME FIT FOR YOU

show gallery 61002500. show gallery 61002500. show gallery 61002500.

FLOORPLANS

2-BEDROOM



2-BEDROOM

TYPE B1a

63 SQM / 678 SQFT

BLK 10

#01-15 to #10-15

TYPE B1

68 SQM / 732 SQFT

BLK 10

#02-24* to #10-24*

BLK 20

#02-49 to #05-49
#02-58* to #05-58*

TYPE B1-P

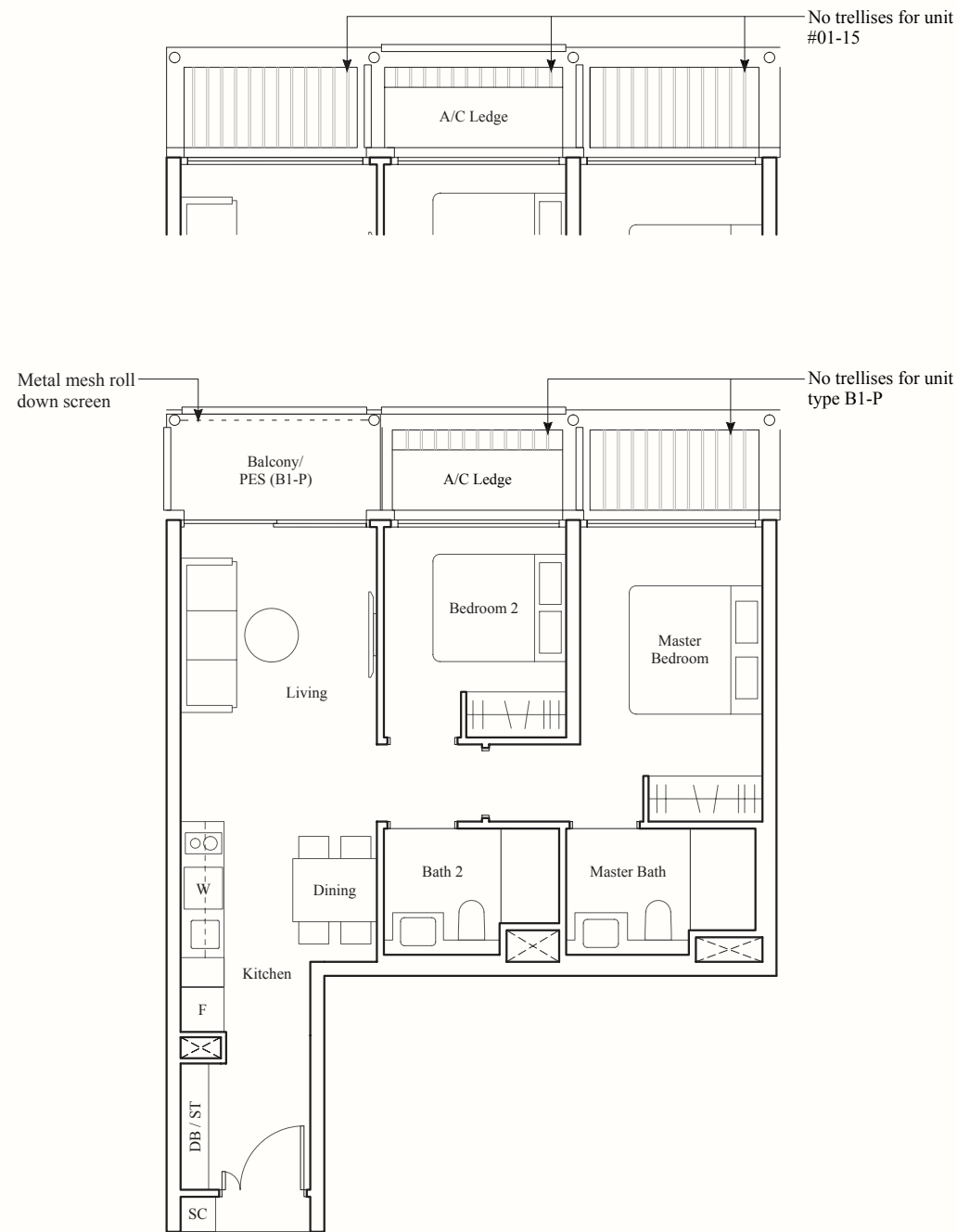
68 SQM / 732 SQFT

BLK 10

#01-24*

BLK 20

#01-49, #01-58*



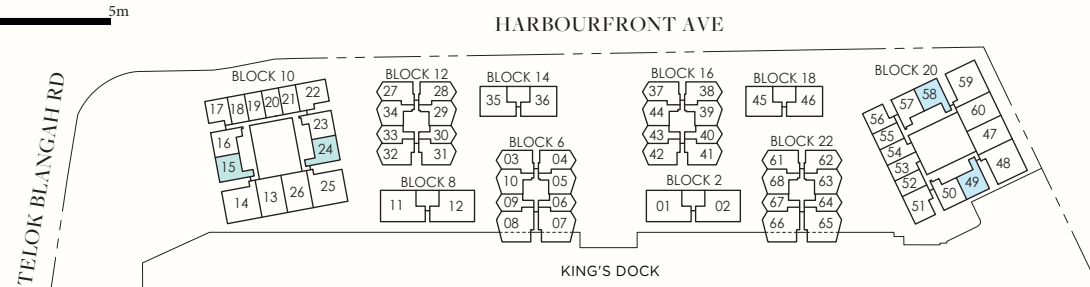
show gallery 61002500.

show gallery 61002500.



F: Fridge
W: Washing Machine-cum-Dryer
DB: Distribution Board
SC: Shoe Cabinet
ST: Storage

* Denotes mirror image



AREA INCLUDES AIR-CON (A/C) LEDGE, BALCONY, PRIVATE ENCLOSED SPACE (PES) AND STRATA VOID AREA WHERE APPLICABLE. SOME UNITS ARE MIRROR IMAGES OF THE PLAN SHOWN IN THE BROCHURE. PLEASE REFER TO THE KEY PLAN FOR ORIENTATION. THE PLANS ARE SUBJECT TO CHANGE AS MAY BE REQUIRED BY THE RELEVANT AUTHORITIES. ALL MEASUREMENTS ARE APPROXIMATE ONLY AND ARE SUBJECT TO GOVERNMENT RE-SURVEY. THE BALCONY SHALL NOT BE ENCLOSED UNLESS WITH THE APPROVED BALCONY SCREEN.

2-BEDROOM

TYPE B2a

64 SQM / 689 SQFT

BLK 10

#01-16 to #10-16

TYPE B2b

69 SQM / 743 SQFT

BLK 20

#02-57*

TYPE B2b-P

69 SQM / 743 SQFT

BLK 20

#01-57*

TYPE B2

69 SQM / 743 SQFT

BLK 10

#02-23* to #10-23*

BLK 20

#02-50 to #05-50
#03-57* to #05-57*

TYPE B2-P

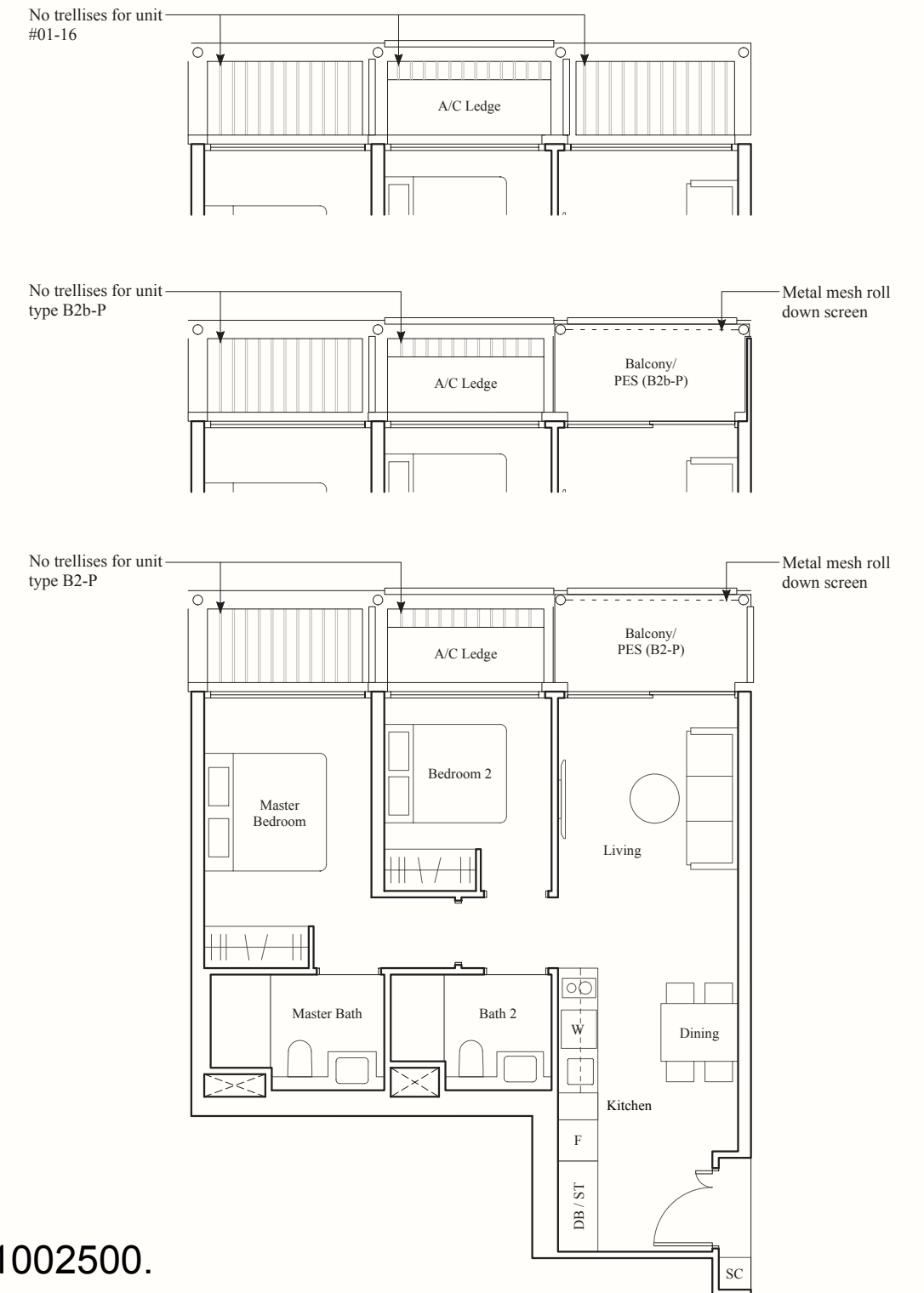
69 SQM / 743 SQFT

BLK 10

#01-23*

BLK 20

#01-50

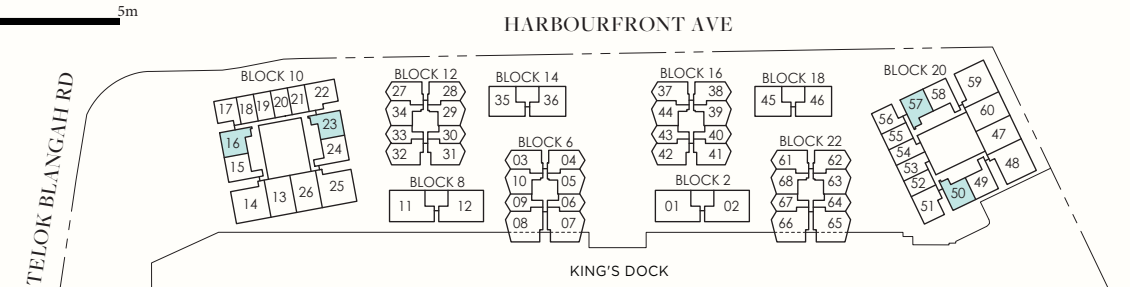


show gallery 61002500.



F: Fridge
W: Washing Machine-cum-Dryer
DB: Distribution Board
SC: Shoe Cabinet
ST: Storage

* Denotes mirror image



AREA INCLUDES AIR-CON (A/C) LEDGE, BALCONY, PRIVATE ENCLOSED SPACE (PES) AND STRATA VOID AREA WHERE APPLICABLE. SOME UNITS ARE MIRROR IMAGES OF THE PLAN SHOWN IN THE BROCHURE. PLEASE REFER TO THE KEY PLAN FOR ORIENTATION. THE PLANS ARE SUBJECT TO CHANGE AS MAY BE REQUIRED BY THE RELEVANT AUTHORITIES. ALL MEASUREMENTS ARE APPROXIMATE ONLY AND ARE SUBJECT TO GOVERNMENT RE-SURVEY. THE BALCONY SHALL NOT BE ENCLOSED UNLESS WITH THE APPROVED BALCONY SCREEN.

2-BEDROOM

TYPE B₃

64 SQM / 689 SQFT

BLK 10

#02-22 to #10-22

BLK 20

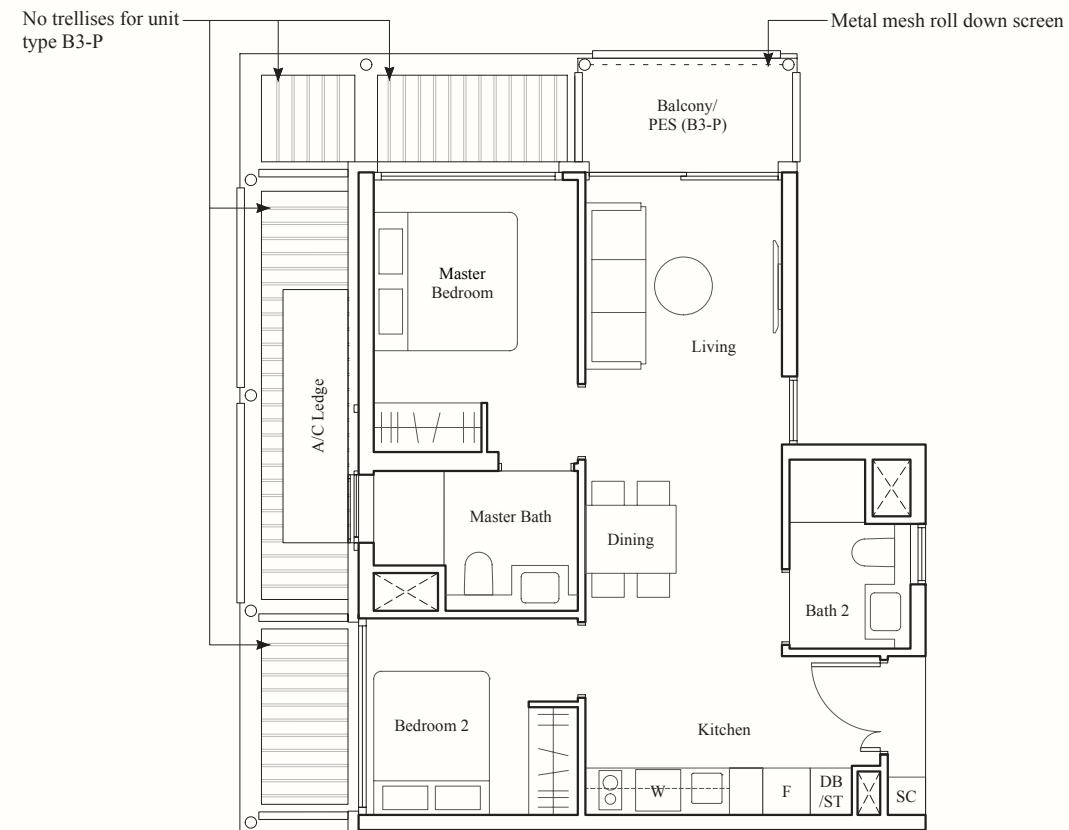
#02-51* to #05-51*

TYPE B₃-P

64 SQM / 689 SQFT

BLK 20

#01-51*



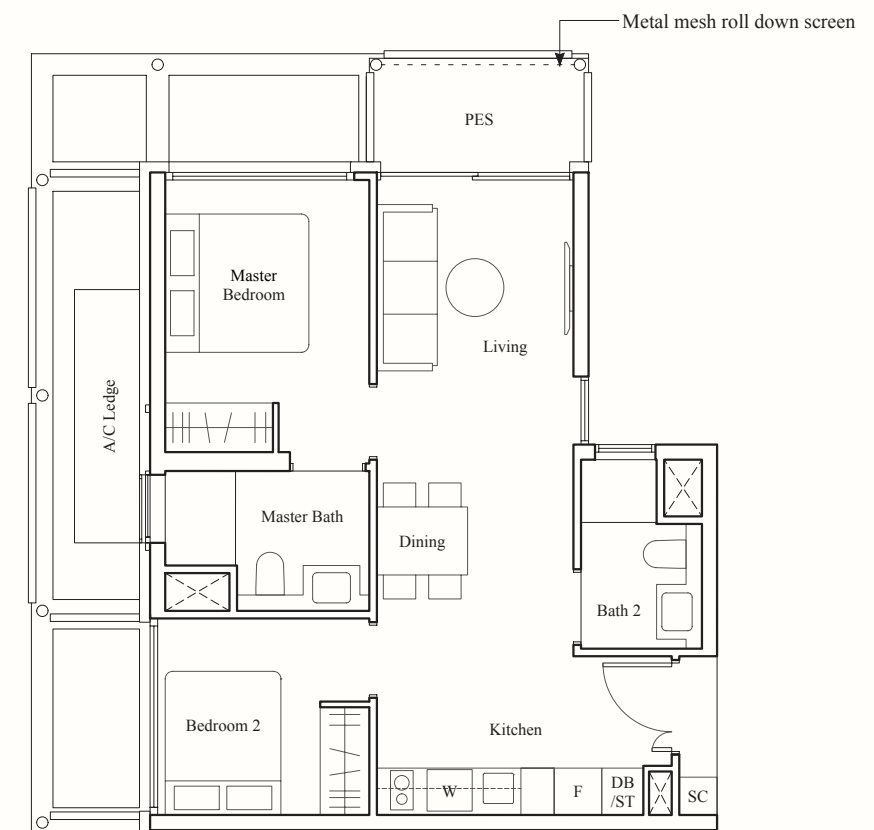
2-BEDROOM

TYPE B_{3a}-P

64 SQM / 689 SQFT

BLK 10

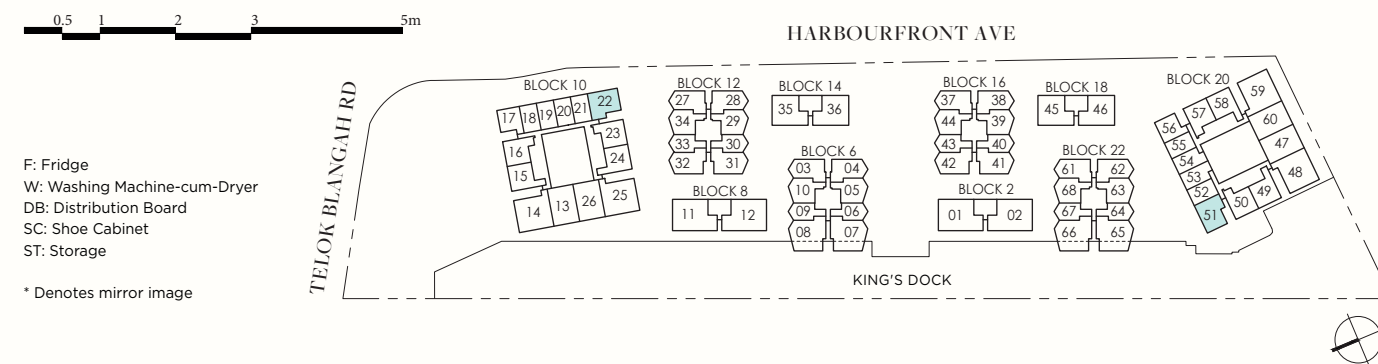
#01-22



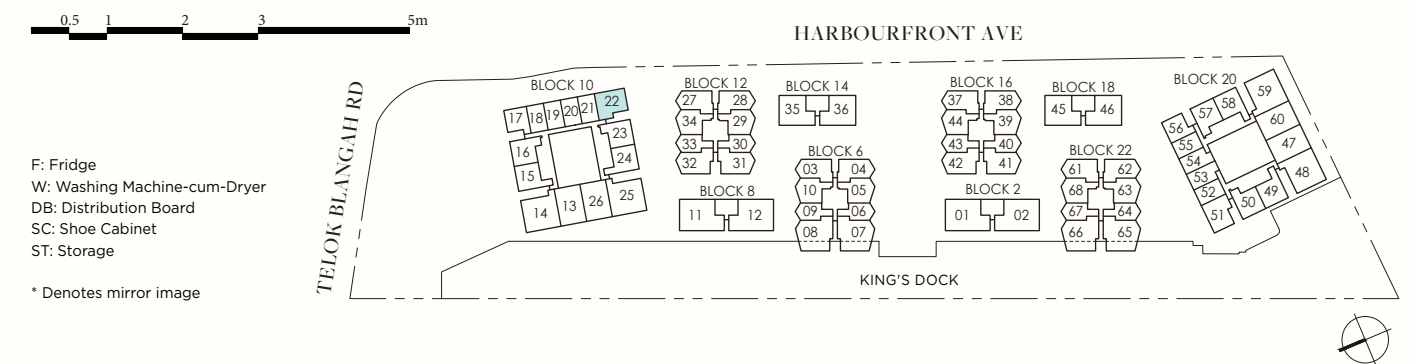
[show gallery 61002500.](#)

[show gallery 61002500.](#)

[show gallery 61002500.](#)



AREA INCLUDES AIR-CON (A/C) LEDGE, BALCONY, PRIVATE ENCLOSED SPACE (PES) AND STRATA VOID AREA WHERE APPLICABLE. SOME UNITS ARE MIRROR IMAGES OF THE PLAN SHOWN IN THE BROCHURE. PLEASE REFER TO THE KEY PLAN FOR ORIENTATION. THE PLANS ARE SUBJECT TO CHANGE AS MAY BE REQUIRED BY THE RELEVANT AUTHORITIES. ALL MEASUREMENTS ARE APPROXIMATE ONLY AND ARE SUBJECT TO GOVERNMENT RE-SURVEY. THE BALCONY SHALL NOT BE ENCLOSED UNLESS WITH THE APPROVED BALCONY SCREEN.



AREA INCLUDES AIR-CON (A/C) LEDGE, BALCONY, PRIVATE ENCLOSED SPACE (PES) AND STRATA VOID AREA WHERE APPLICABLE. SOME UNITS ARE MIRROR IMAGES OF THE PLAN SHOWN IN THE BROCHURE. PLEASE REFER TO THE KEY PLAN FOR ORIENTATION. THE PLANS ARE SUBJECT TO CHANGE AS MAY BE REQUIRED BY THE RELEVANT AUTHORITIES. ALL MEASUREMENTS ARE APPROXIMATE ONLY AND ARE SUBJECT TO GOVERNMENT RE-SURVEY. THE BALCONY SHALL NOT BE ENCLOSED UNLESS WITH THE APPROVED BALCONY SCREEN.

2-BEDROOM

TYPE B4

71 SQM / 764 SQFT

BLK 6
#02-05 to #08-05

BLK 12
#02-29 to #08-29

BLK 16
#02-39 to #08-39

BLK 22
#02-63 to #07-63

TYPE B4-P

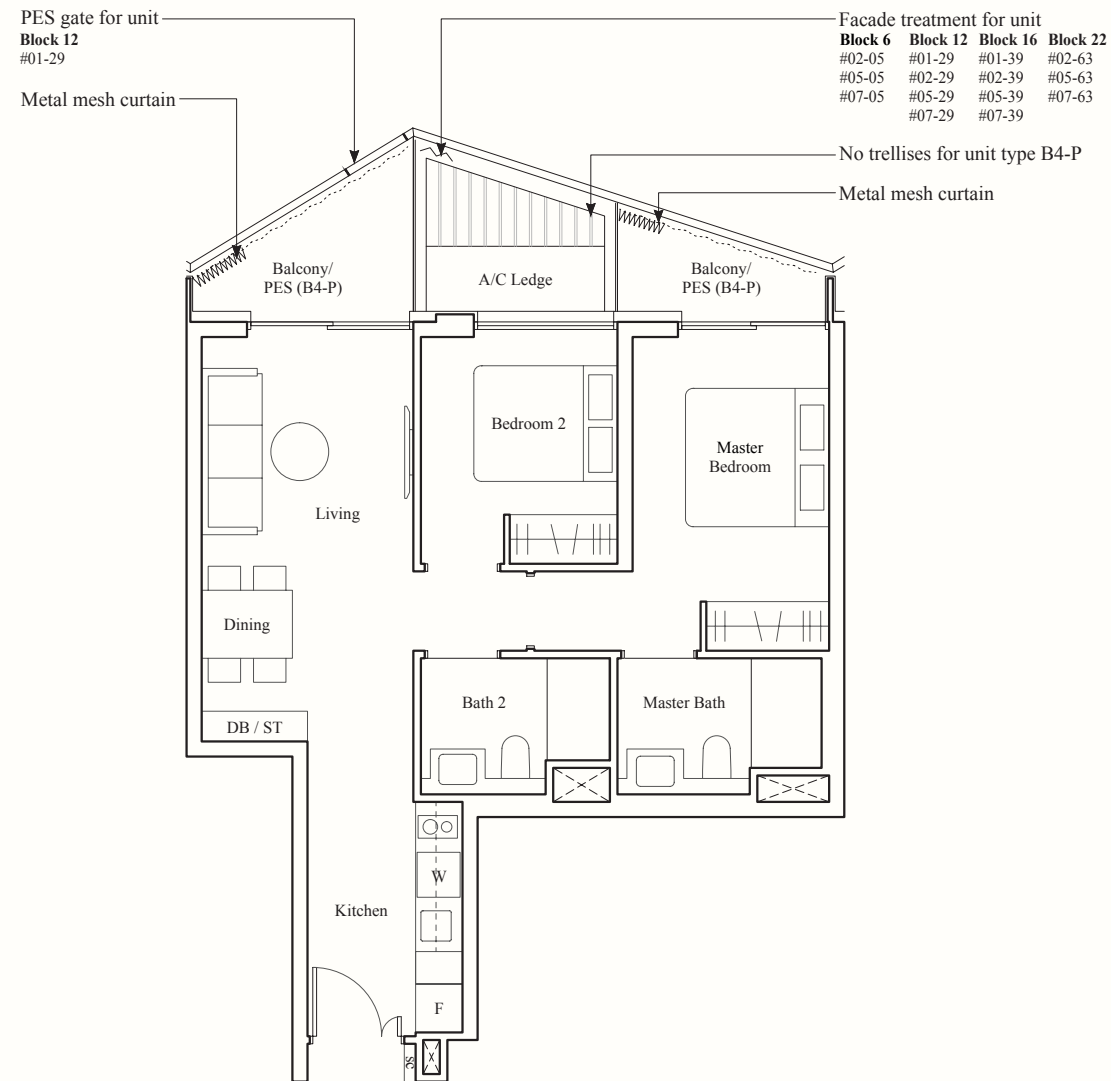
71 SQM / 764 SQFT

BLK 6
#01-05

BLK 12
#01-29

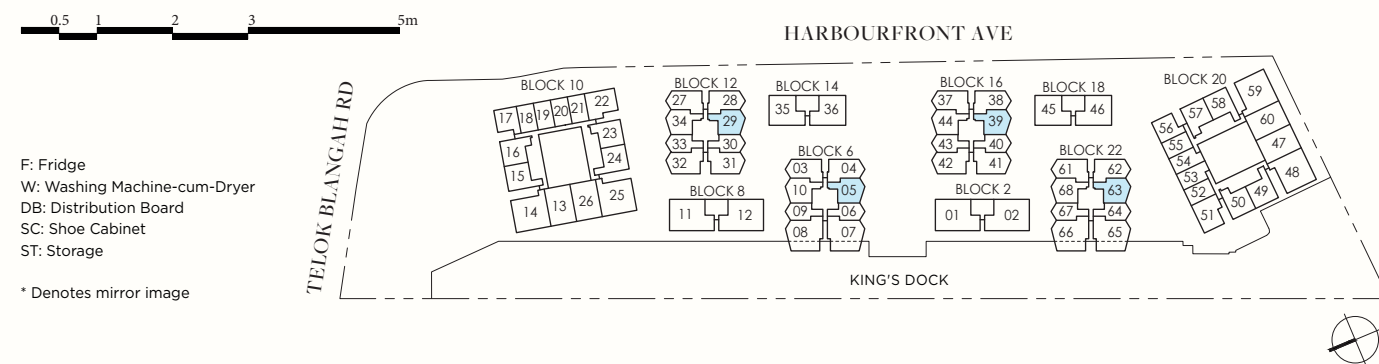
BLK 16
#01-39

BLK 22
#01-63



show gallery 61002500.

show gallery 61002500.



AREA INCLUDES AIR-CON (A/C) LEDGE, BALCONY, PRIVATE ENCLOSED SPACE (PES) AND STRATA VOID AREA WHERE APPLICABLE. SOME UNITS ARE MIRROR IMAGES OF THE PLAN SHOWN IN THE BROCHURE. PLEASE REFER TO THE KEY PLAN FOR ORIENTATION. THE PLANS ARE SUBJECT TO CHANGE AS MAY BE REQUIRED BY THE RELEVANT AUTHORITIES. ALL MEASUREMENTS ARE APPROXIMATE ONLY AND ARE SUBJECT TO GOVERNMENT RE-SURVEY. THE BALCONY SHALL NOT BE ENCLOSED UNLESS WITH THE APPROVED BALCONY SCREEN.

2-BEDROOM

TYPE B5

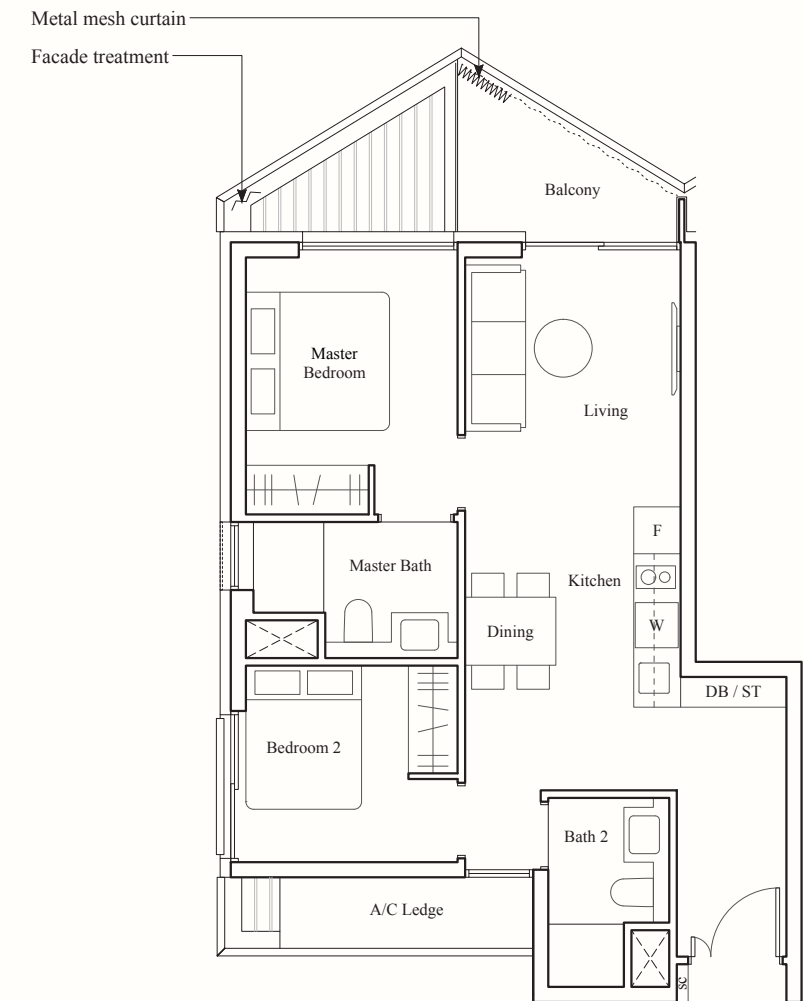
67 SQM / 721 SQFT

BLK 6
#02-03* to #08-03*
#02-04 to #08-04

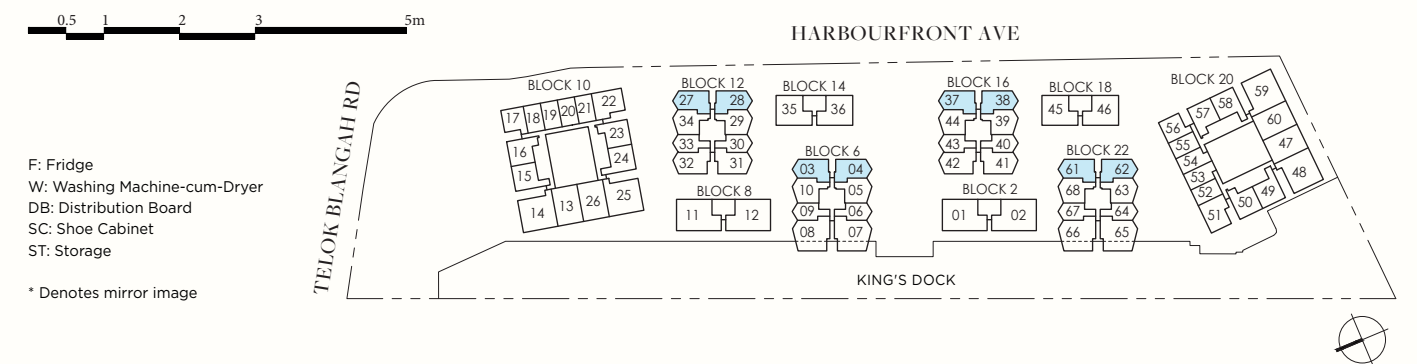
BLK 12
#02-27* to #08-27*
#02-28 to #08-28

BLK 16
#02-37* to #08-37*
#02-38 to #08-38

BLK 22
#02-61* to #07-61*
#02-62 to #07-62



show gallery 61002500.



AREA INCLUDES AIR-CON (A/C) LEDGE, BALCONY, PRIVATE ENCLOSED SPACE (PES) AND STRATA VOID AREA WHERE APPLICABLE. SOME UNITS ARE MIRROR IMAGES OF THE PLAN SHOWN IN THE BROCHURE. PLEASE REFER TO THE KEY PLAN FOR ORIENTATION. THE PLANS ARE SUBJECT TO CHANGE AS MAY BE REQUIRED BY THE RELEVANT AUTHORITIES. ALL MEASUREMENTS ARE APPROXIMATE ONLY AND ARE SUBJECT TO GOVERNMENT RE-SURVEY. THE BALCONY SHALL NOT BE ENCLOSED UNLESS WITH THE APPROVED BALCONY SCREEN.

2-BEDROOM

TYPE B5-P

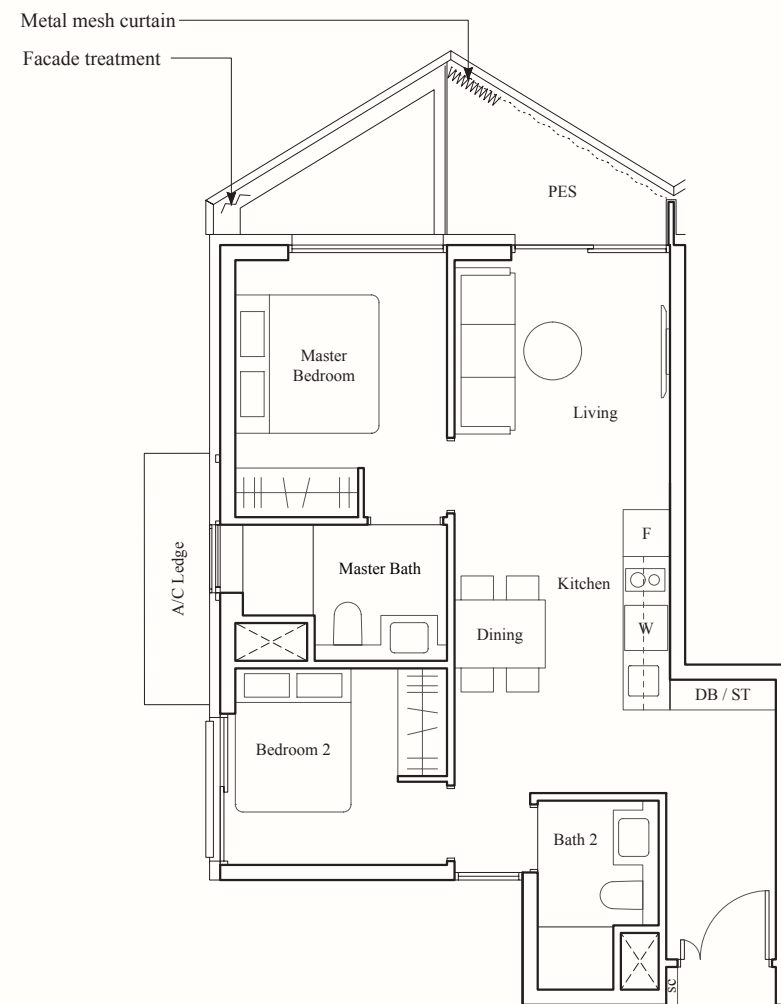
67 SQM / 721 SQFT

BLK 6

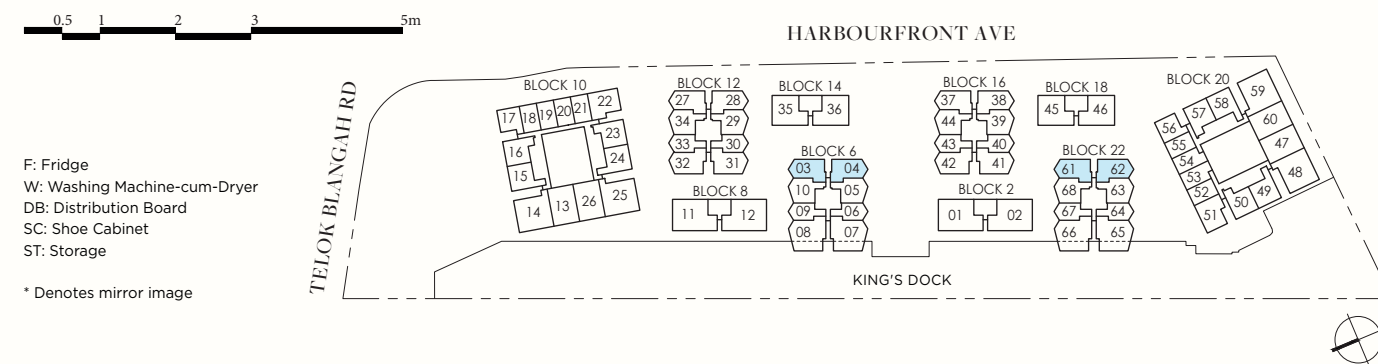
#01-03*, #01-04

BLK 22

#01-61*, #01-62



show gallery 61002500. show gallery 61002500.



AREA INCLUDES AIR-CON (A/C) LEDGE, BALCONY, PRIVATE ENCLOSED SPACE (PES) AND STRATA VOID AREA WHERE APPLICABLE. SOME UNITS ARE MIRROR IMAGES OF THE PLAN SHOWN IN THE BROCHURE. PLEASE REFER TO THE KEY PLAN FOR ORIENTATION. THE PLANS ARE SUBJECT TO CHANGE AS MAY BE REQUIRED BY THE RELEVANT AUTHORITIES. ALL MEASUREMENTS ARE APPROXIMATE ONLY AND ARE SUBJECT TO GOVERNMENT RE-SURVEY. THE BALCONY SHALL NOT BE ENCLOSED UNLESS WITH THE APPROVED BALCONY SCREEN.

2-BEDROOM

TYPE B6

70 SQM / 753 SQFT

BLK 6

#02-10 to #08-10

BLK 12

#02-34 to #08-34

BLK 16

#02-44 to #08-44

BLK 22

#02-68 to #07-68

TYPE B6-P

70 SQM / 753 SQFT

BLK 6

#01-10

BLK 12

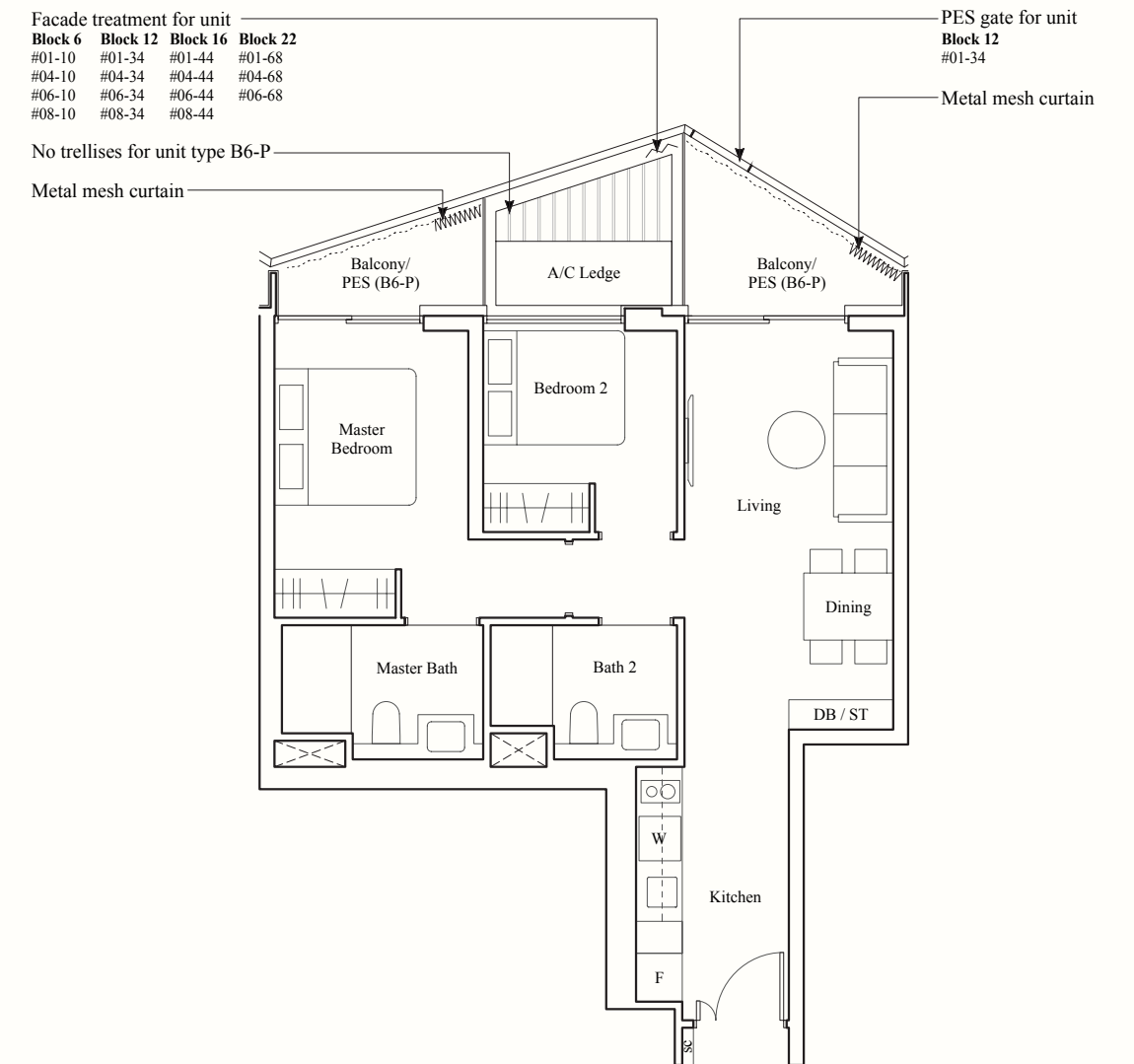
#01-34

BLK 16

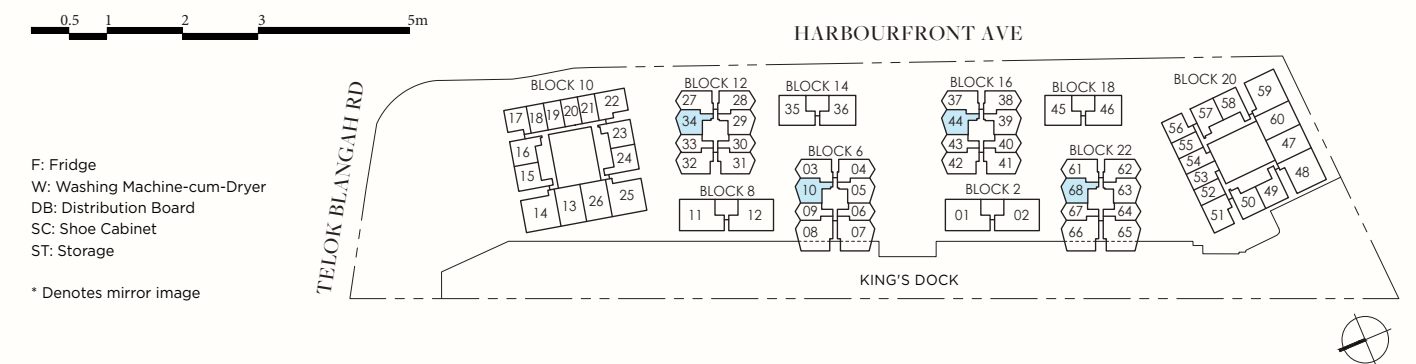
#01-44

BLK 22

#01-68



show gallery 61002500.



AREA INCLUDES AIR-CON (A/C) LEDGE, BALCONY, PRIVATE ENCLOSED SPACE (PES) AND STRATA VOID AREA WHERE APPLICABLE. SOME UNITS ARE MIRROR IMAGES OF THE PLAN SHOWN IN THE BROCHURE. PLEASE REFER TO THE KEY PLAN FOR ORIENTATION. THE PLANS ARE SUBJECT TO CHANGE AS MAY BE REQUIRED BY THE RELEVANT AUTHORITIES. ALL MEASUREMENTS ARE APPROXIMATE ONLY AND ARE SUBJECT TO GOVERNMENT RE-SURVEY. THE BALCONY SHALL NOT BE ENCLOSED UNLESS WITH THE APPROVED BALCONY SCREEN.

2-BEDROOM + STUDY

TYPE BS1

83 SQM / 893 SQFT

BLK 6
#02-06, #02-09*

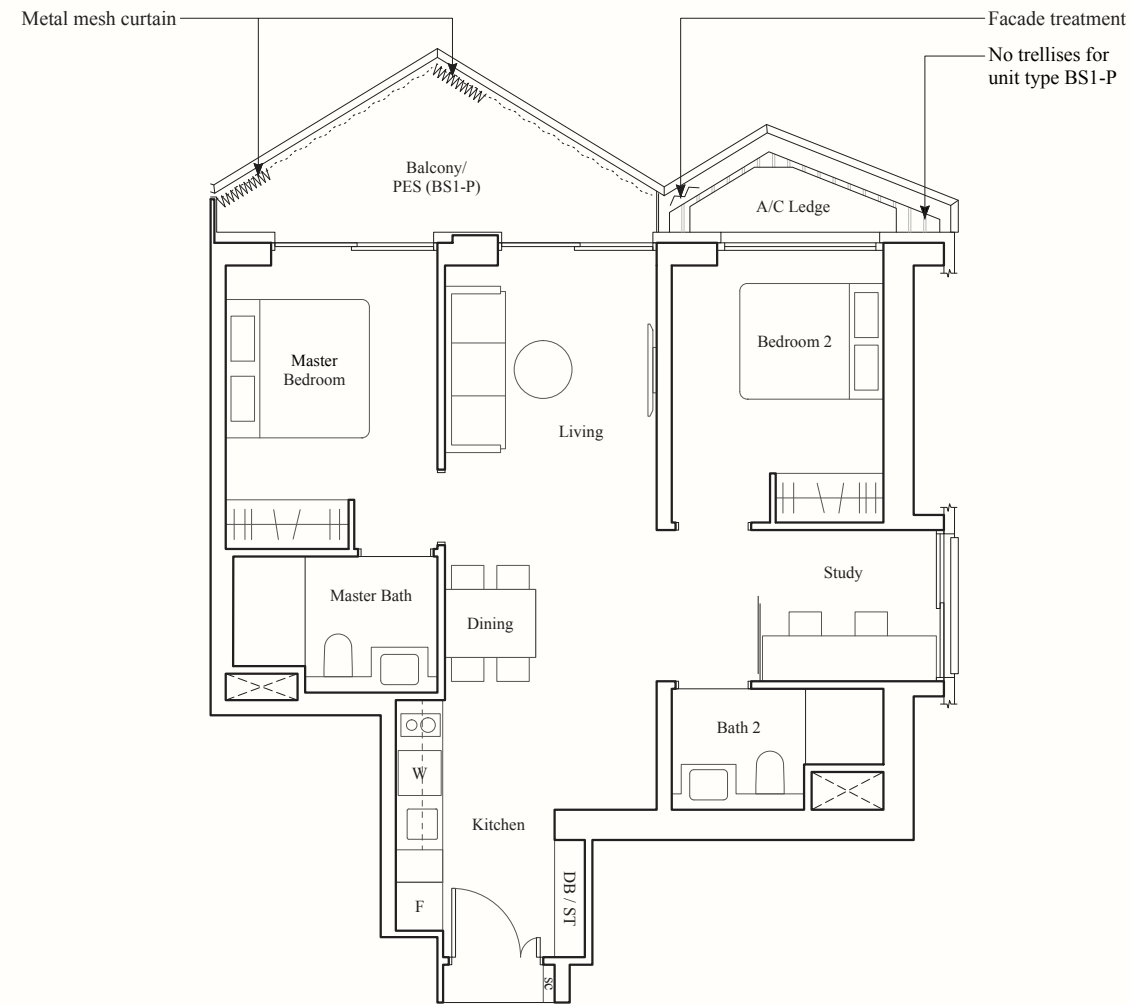
BLK 22
#02-64, #02-67*

TYPE BS1-P

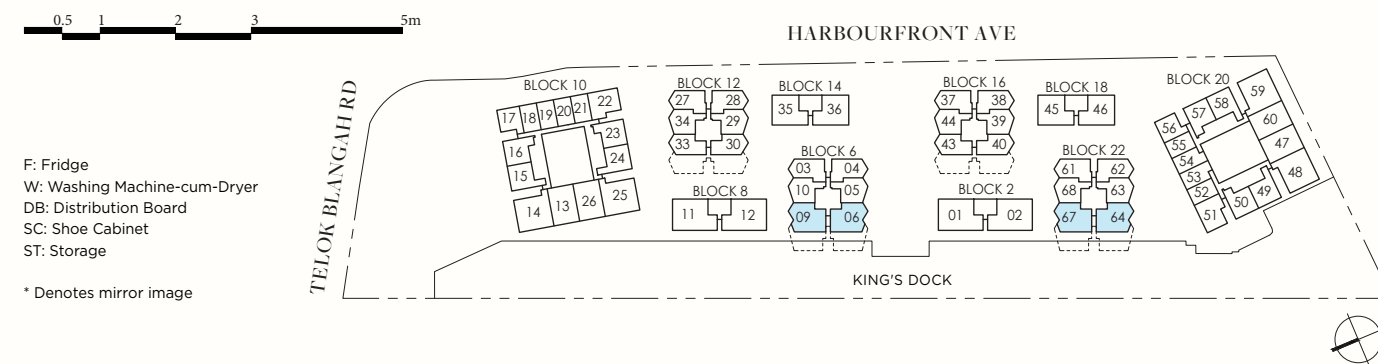
83 SQM / 893 SQFT

BLK 6
#01-06

BLK 22
#01-64



[show gallery 61002500.](#) [show gallery 61002500.](#)



AREA INCLUDES AIR-CON (A/C) LEDGE, BALCONY, PRIVATE ENCLOSED SPACE (PES) AND STRATA VOID AREA WHERE APPLICABLE. SOME UNITS ARE MIRROR IMAGES OF THE PLAN SHOWN IN THE BROCHURE. PLEASE REFER TO THE KEY PLAN FOR ORIENTATION. THE PLANS ARE SUBJECT TO CHANGE AS MAY BE REQUIRED BY THE RELEVANT AUTHORITIES. ALL MEASUREMENTS ARE APPROXIMATE ONLY AND ARE SUBJECT TO GOVERNMENT RE-SURVEY. THE BALCONY SHALL NOT BE ENCLOSED UNLESS WITH THE APPROVED BALCONY SCREEN.

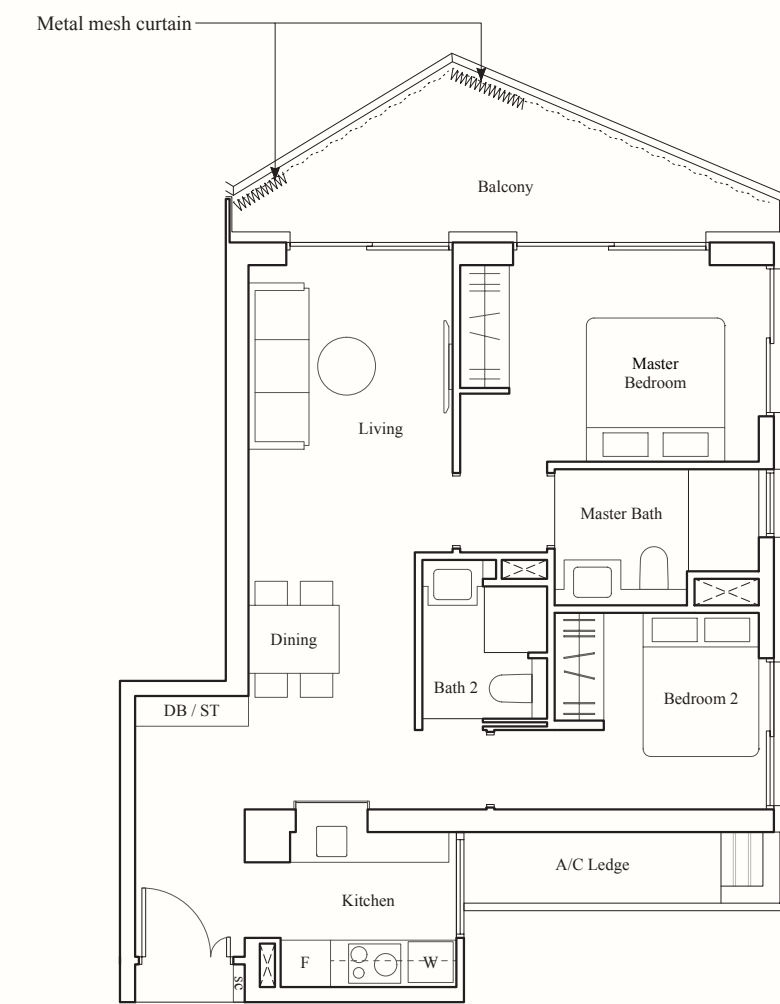
2-BEDROOM PREMIUM

TYPE BP1

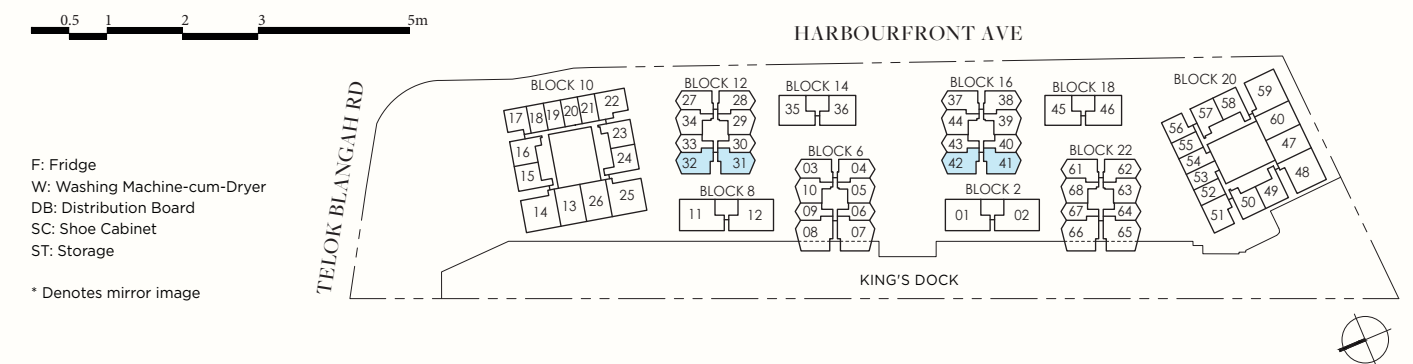
82 SQM / 883 SQFT

BLK 12
#04-31 to #08-31
#04-32* to #08-32*

BLK 16
#04-41 to #08-41
#04-42* to #08-42*



[show gallery 61002500.](#)



AREA INCLUDES AIR-CON (A/C) LEDGE, BALCONY, PRIVATE ENCLOSED SPACE (PES) AND STRATA VOID AREA WHERE APPLICABLE. SOME UNITS ARE MIRROR IMAGES OF THE PLAN SHOWN IN THE BROCHURE. PLEASE REFER TO THE KEY PLAN FOR ORIENTATION. THE PLANS ARE SUBJECT TO CHANGE AS MAY BE REQUIRED BY THE RELEVANT AUTHORITIES. ALL MEASUREMENTS ARE APPROXIMATE ONLY AND ARE SUBJECT TO GOVERNMENT RE-SURVEY. THE BALCONY SHALL NOT BE ENCLOSED UNLESS WITH THE APPROVED BALCONY SCREEN.

2-BEDROOM VILLA

TYPE BV1

91 SQM / 980 SQFT

BLK 14
#02-35, #02-36*

BLK 18
#02-45, #02-46*

TYPE BV1-P

91 SQM / 980 SQFT

BLK 14
#01-36*

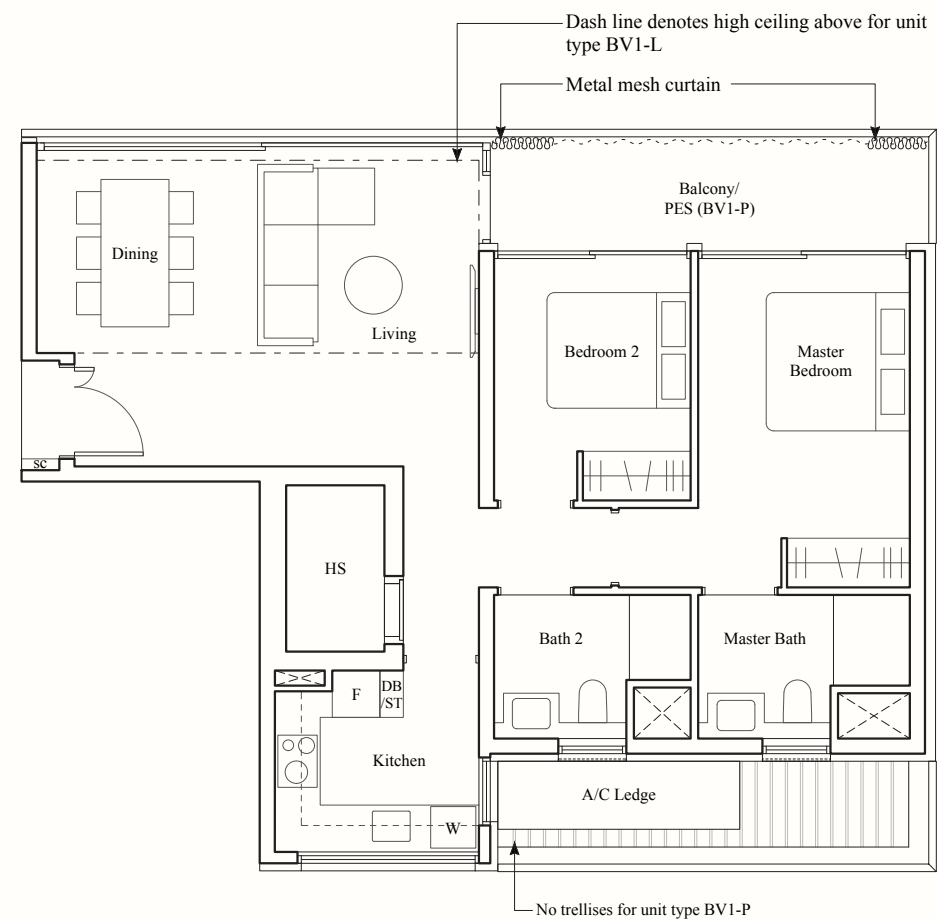
BLK 18
#01-46*

TYPE BV1-L

108 SQM / 1163 SQFT

BLK 14
#03-35, #03-36*

BLK 18
#03-45, #03-46*



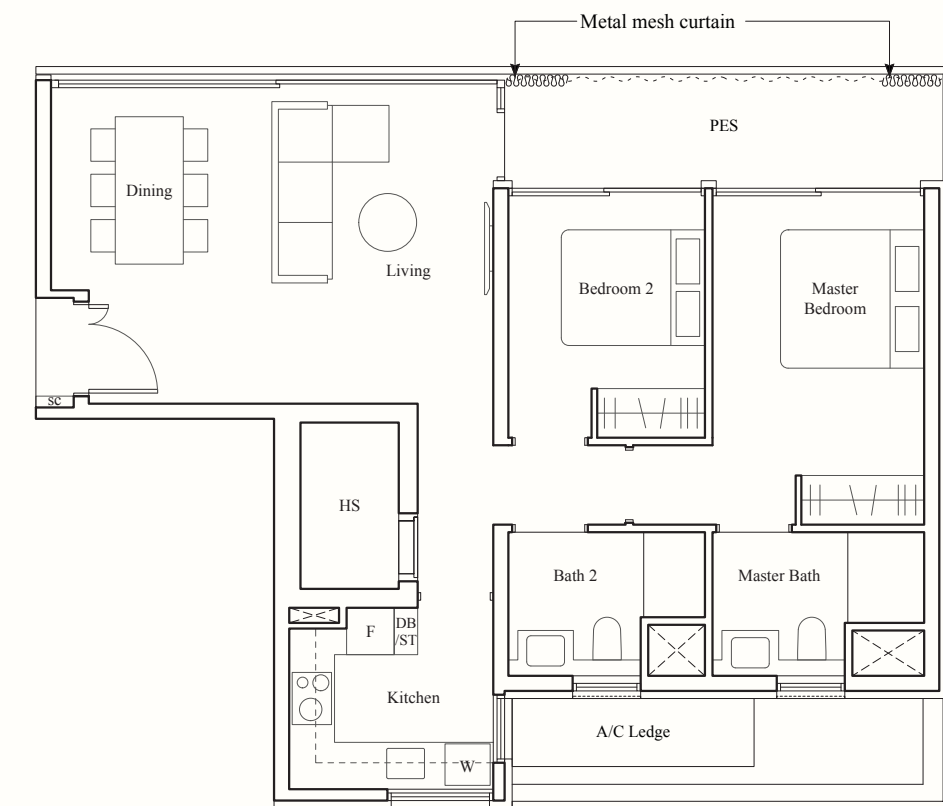
2-BEDROOM VILLA

TYPE BV1a-P

91 SQM / 980 SQFT

BLK 14
#01-35

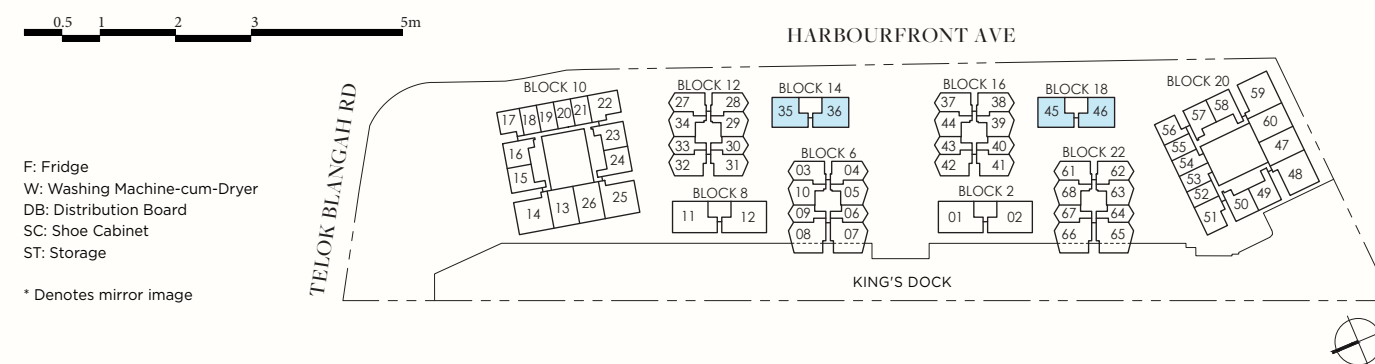
BLK 18
#01-45



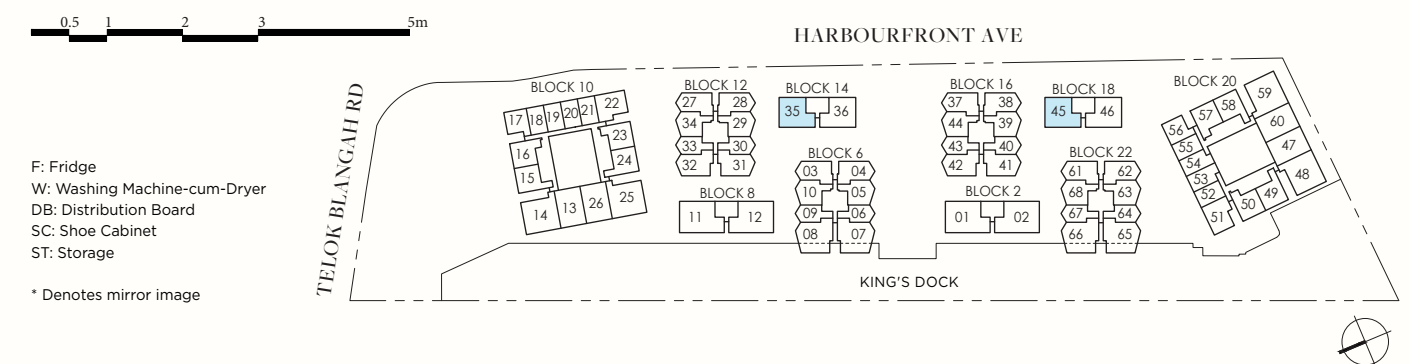
show gallery 61002500.

show gallery 61002500.

show gallery 61002500.



AREA INCLUDES AIR-CON (A/C) LEDGE, BALCONY, PRIVATE ENCLOSED SPACE (PES) AND STRATA VOID AREA WHERE APPLICABLE. SOME UNITS ARE MIRROR IMAGES OF THE PLAN SHOWN IN THE BROCHURE. PLEASE REFER TO THE KEY PLAN FOR ORIENTATION. THE PLANS ARE SUBJECT TO CHANGE AS MAY BE REQUIRED BY THE RELEVANT AUTHORITIES. ALL MEASUREMENTS ARE APPROXIMATE ONLY AND ARE SUBJECT TO GOVERNMENT RE-SURVEY. THE BALCONY SHALL NOT BE ENCLOSED UNLESS WITH THE APPROVED BALCONY SCREEN.



AREA INCLUDES AIR-CON (A/C) LEDGE, BALCONY, PRIVATE ENCLOSED SPACE (PES) AND STRATA VOID AREA WHERE APPLICABLE. SOME UNITS ARE MIRROR IMAGES OF THE PLAN SHOWN IN THE BROCHURE. PLEASE REFER TO THE KEY PLAN FOR ORIENTATION. THE PLANS ARE SUBJECT TO CHANGE AS MAY BE REQUIRED BY THE RELEVANT AUTHORITIES. ALL MEASUREMENTS ARE APPROXIMATE ONLY AND ARE SUBJECT TO GOVERNMENT RE-SURVEY. THE BALCONY SHALL NOT BE ENCLOSED UNLESS WITH THE APPROVED BALCONY SCREEN.

OFFICIAL MARKETING AGENCY

Huttons[®]
The Agency of Choice

A HOME FIT FOR YOU

FLOORPLANS

3-BEDROOM

[show gallery 61002500.](#) [show gallery 61002500.](#) [show gallery 61002500.](#)



3-BEDROOM + STUDY

TYPE CS1

100 SQM / 1076 SQFT

BLK 10

#02-13 to #05-13,
#09-13 to #10-13
#03-26* to #10-26*

BLK 20

#02-47 to #04-47
#02-60* to #04-60*

TYPE CS1-P

100 SQM / 1076 SQFT

BLK 10

#01-13

BLK 20

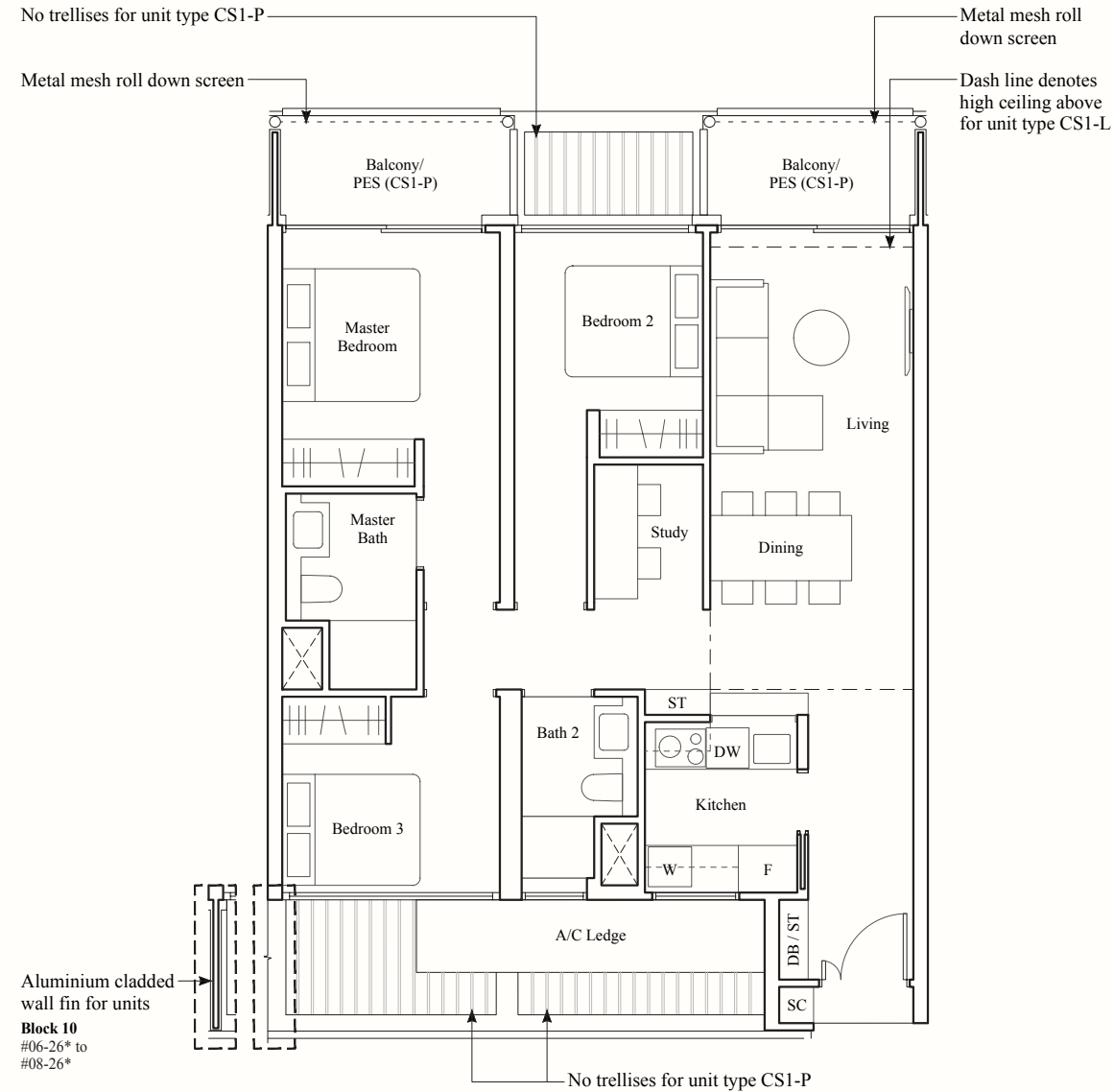
#01-47, #01-60*

TYPE CS1-L

119 SQM / 1281 SQFT

BLK 20

#05-47, #05-60*



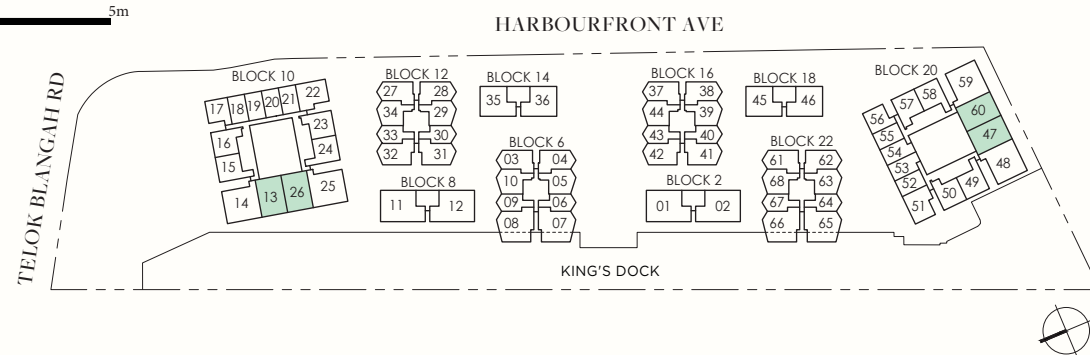
show gallery 61002500.

show gallery 61002500.



F: Fridge
W: Washing Machine-cum-Dryer
DB: Distribution Board
DW: Dishwasher
SC: Shoe Cabinet
ST: Storage

* Denotes mirror image



AREA INCLUDES AIR-CON (A/C) LEDGE, BALCONY, PRIVATE ENCLOSED SPACE (PES) AND STRATA VOID AREA WHERE APPLICABLE. SOME UNITS ARE MIRROR IMAGES OF THE PLAN SHOWN IN THE BROCHURE. PLEASE REFER TO THE KEY PLAN FOR ORIENTATION. THE PLANS ARE SUBJECT TO CHANGE AS MAY BE REQUIRED BY THE RELEVANT AUTHORITIES. ALL MEASUREMENTS ARE APPROXIMATE ONLY AND ARE SUBJECT TO GOVERNMENT RE-SURVEY. THE BALCONY SHALL NOT BE ENCLOSED UNLESS WITH THE APPROVED BALCONY SCREEN.

3-BEDROOM PREMIUM

TYPE CP1

113 SQM / 1216 SQFT

BLK 10

#02-14 to #05-14,
#09-14 to #10-14
#03-25* to #10-25*

BLK 20

#02-48 to #04-48
#02-59* to #04-59*

TYPE CP1-P

113 SQM / 1216 SQFT

BLK 10

#01-14

BLK 20

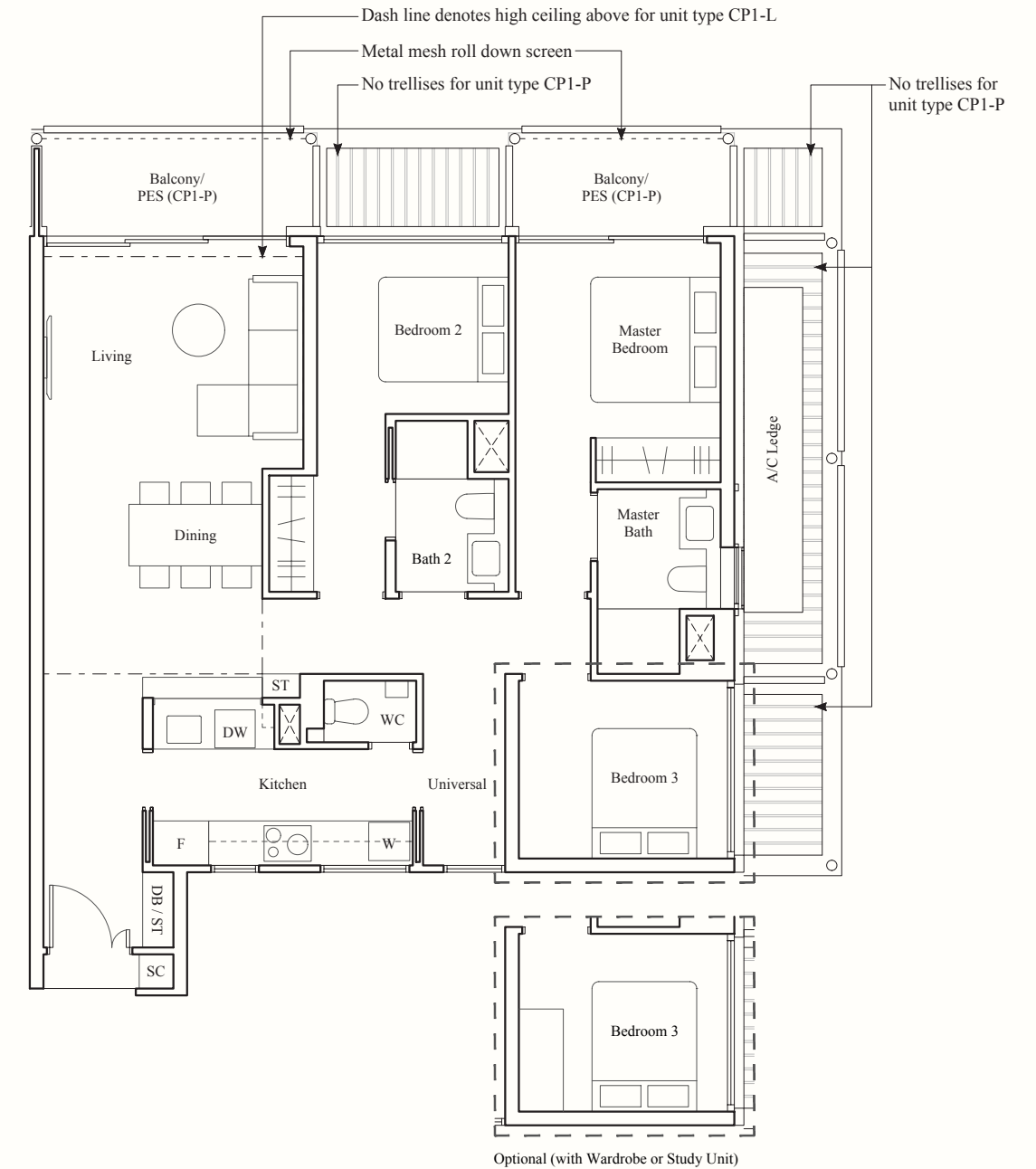
#01-48, #01-59*

TYPE CP1-L

136 SQM / 1464 SQFT

BLK 20

#05-48, #05-59*

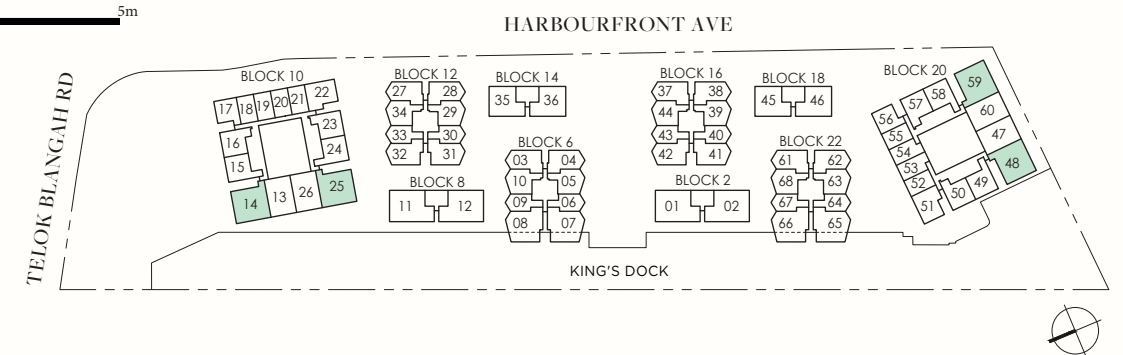


show gallery 61002500.



F: Fridge
W: Washing Machine-cum-Dryer
DB: Distribution Board
DW: Dishwasher
SC: Shoe Cabinet
ST: Storage

* Denotes mirror image



AREA INCLUDES AIR-CON (A/C) LEDGE, BALCONY, PRIVATE ENCLOSED SPACE (PES) AND STRATA VOID AREA WHERE APPLICABLE. SOME UNITS ARE MIRROR IMAGES OF THE PLAN SHOWN IN THE BROCHURE. PLEASE REFER TO THE KEY PLAN FOR ORIENTATION. THE PLANS ARE SUBJECT TO CHANGE AS MAY BE REQUIRED BY THE RELEVANT AUTHORITIES. ALL MEASUREMENTS ARE APPROXIMATE ONLY AND ARE SUBJECT TO GOVERNMENT RE-SURVEY. THE BALCONY SHALL NOT BE ENCLOSED UNLESS WITH THE APPROVED BALCONY SCREEN.

3-BEDROOM PREMIUM

TYPE CP2

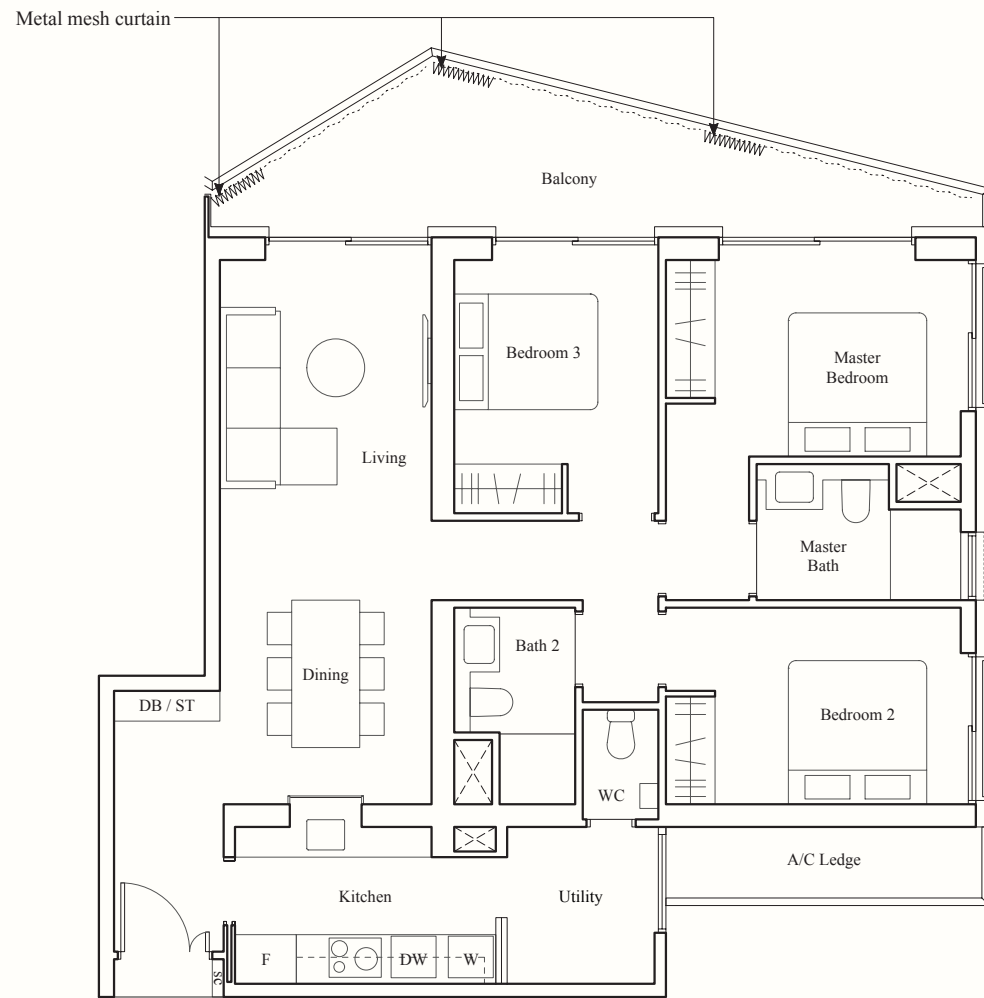
116 SQM / 1249 SQFT

BLK 6

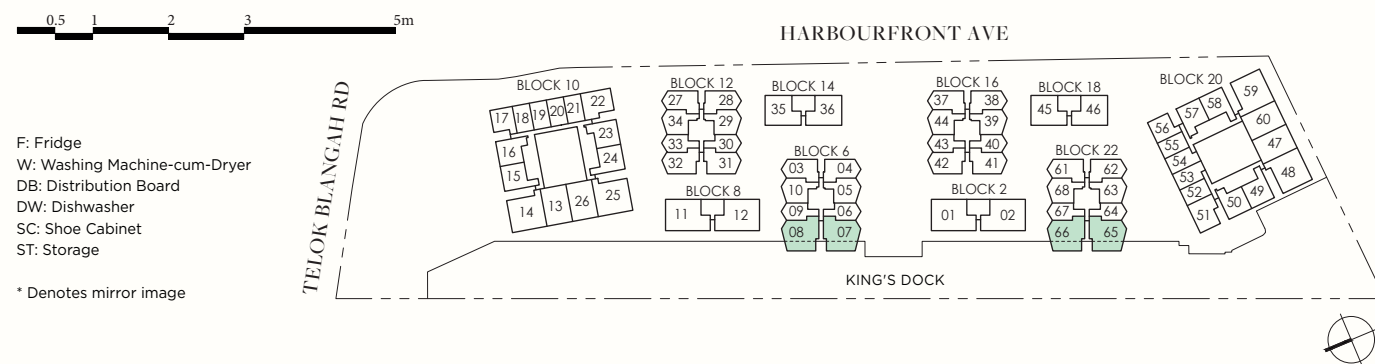
#03-07 to #08-07
#03-08* to #08-08*

BLK 22

#03-65 to #07-65
#03-66* to #07-66*



show gallery 61002500. show gallery 61002500.



AREA INCLUDES AIR-CON (A/C) LEDGE, BALCONY, PRIVATE ENCLOSED SPACE (PES) AND STRATA VOID AREA WHERE APPLICABLE. SOME UNITS ARE MIRROR IMAGES OF THE PLAN SHOWN IN THE BROCHURE. PLEASE REFER TO THE KEY PLAN FOR ORIENTATION. THE PLANS ARE SUBJECT TO CHANGE AS MAY BE REQUIRED BY THE RELEVANT AUTHORITIES. ALL MEASUREMENTS ARE APPROXIMATE ONLY AND ARE SUBJECT TO GOVERNMENT RE-SURVEY. THE BALCONY SHALL NOT BE ENCLOSED UNLESS WITH THE APPROVED BALCONY SCREEN.

3-BEDROOM VILLA

TYPE CV1-P

125 SQM / 1345 SQFT

BLK 2

#01-01, #01-02*

BLK 8

#01-11, #01-12*

TYPE CV1-L

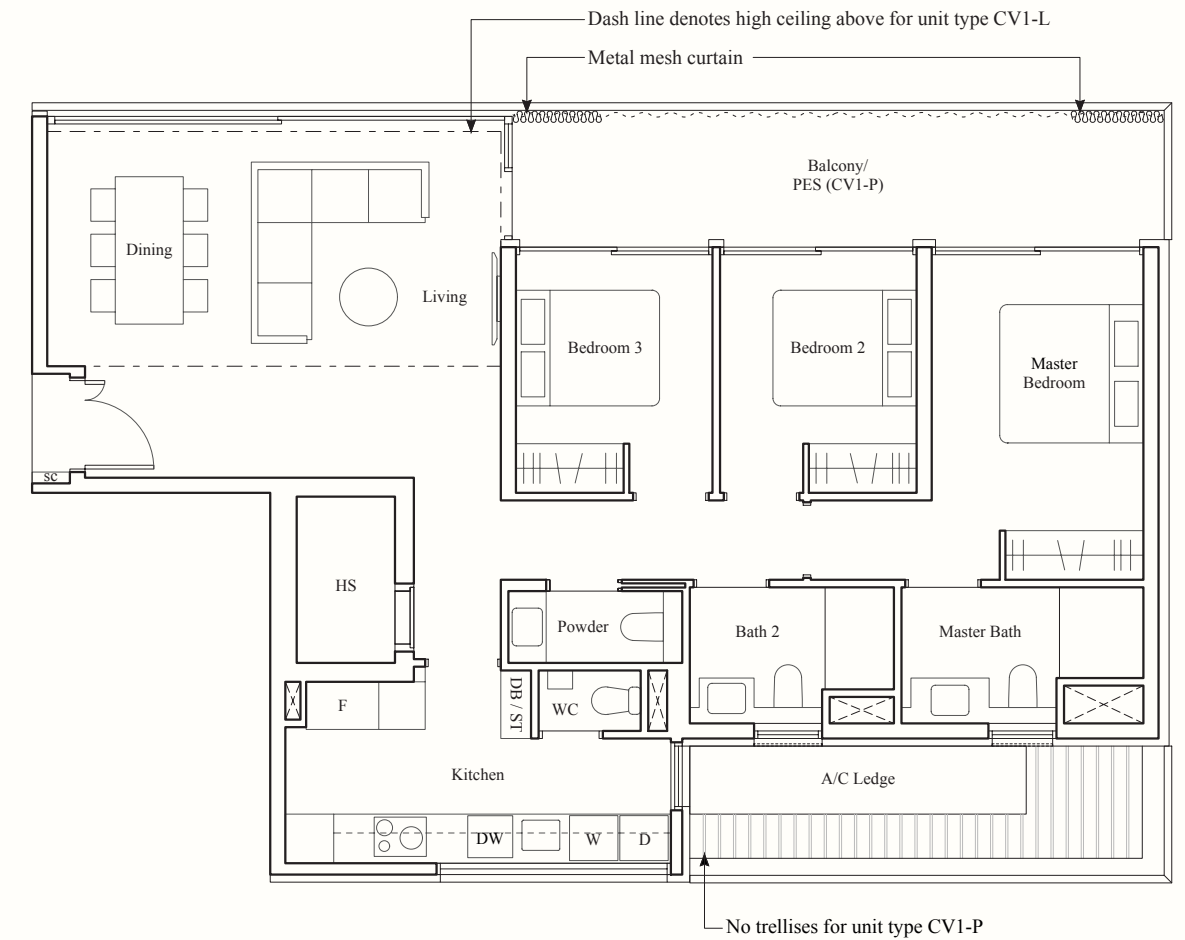
146 SQM / 1572 SQFT

BLK 2

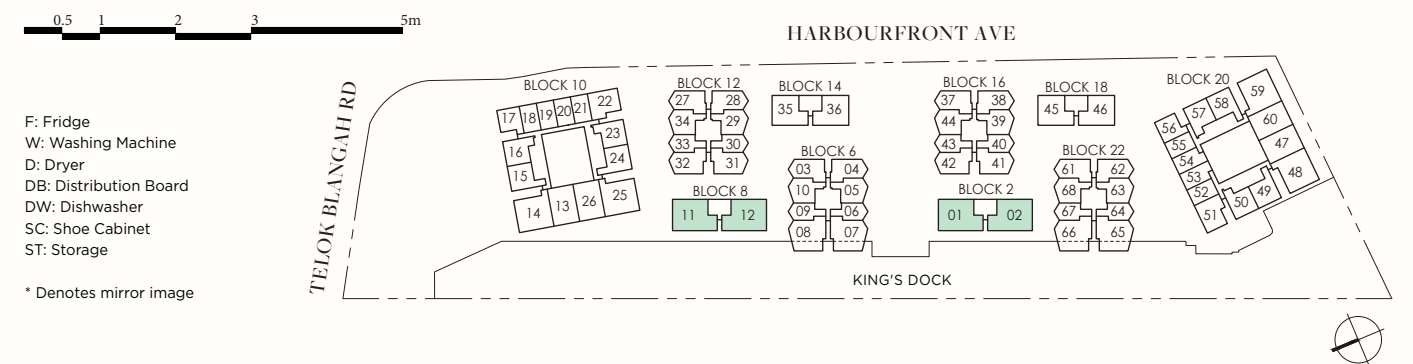
#02-01, #02-02*

BLK 8

#02-11, #02-12*



show gallery 61002500.



AREA INCLUDES AIR-CON (A/C) LEDGE, BALCONY, PRIVATE ENCLOSED SPACE (PES) AND STRATA VOID AREA WHERE APPLICABLE. SOME UNITS ARE MIRROR IMAGES OF THE PLAN SHOWN IN THE BROCHURE. PLEASE REFER TO THE KEY PLAN FOR ORIENTATION. THE PLANS ARE SUBJECT TO CHANGE AS MAY BE REQUIRED BY THE RELEVANT AUTHORITIES. ALL MEASUREMENTS ARE APPROXIMATE ONLY AND ARE SUBJECT TO GOVERNMENT RE-SURVEY. THE BALCONY SHALL NOT BE ENCLOSED UNLESS WITH THE APPROVED BALCONY SCREEN.



Mapletree is a leading real estate development, investment, capital and property management company headquartered in Singapore. Mapletree distinguishes itself by actively transforming ageing properties into high-yielding real estate, and its development expertise is best seen through the successful transformation of the 24-ha HarbourFront Precinct and the nearby 13.5-ha Alexandra Precinct in Singapore.

By combining its key strengths, Mapletree has established a track record for building award-winning projects characterized by innovative architecture and excellent design specifications across various real asset classes. Our mixed-use developments integrate business, residence and leisure, offering dynamic destinations for work, live and play.

[show gallery 61002500.](#)

[show gallery 61002500.](#)

[show gallery 61002500.](#)

OFFICIAL MARKETING AGENCY



Keppel Land is the property arm of Keppel Corporation, one of Singapore's flagship multinational corporations with a global footprint in more than 20 countries. Keppel Corporation provides solutions for sustainable urbanisation, focusing on energy & environment, urban development, connectivity and asset management.

As a multi-faceted property company, Keppel Land provides innovative real estate solutions with its sterling portfolio of award-winning residential developments, investment-grade commercial properties and integrated townships.

Keppel Land is geographically diversified in Asia, with Singapore, China and Vietnam as its key markets, while it continues to scale up in other markets such as Indonesia and India.

JOINTLY DEVELOPED BY

mapletree **Keppel Land**

OFFICIAL MARKETING AGENCY

Huttons[®]
The Agency of Choice

show gallery 61002500. show gallery 61002500. show gallery 61002500.

Developer: HarbourFront Three Pte Ltd • Developer Licence Number: C1375 • Tenure of Land: Leasehold of 99 years commencing from 16 August 1999 or from the date of acceptance of SLA's Letter of Offer for lease upgrading (whichever is applicable) • Lot Numbers: 3440C and 3442W MK 01 • Expected Date of Vacant Possession: 31 Dec 2025 • Expected Date of Legal Completion: 31 Dec 2028

The information contained in this brochure has been obtained from sources we believe to be reliable. While every reasonable care has been taken in preparing the information contained herein, the developer and its agents do not warrant the accuracy of the information in this brochure, including the project website, model and the sales gallery/showflat (collectively, the "Materials"), and neither the developer nor its agents shall be held responsible for any inaccuracies or omissions in the Materials. All statements, literature and depictions in the Materials are believed to be correct, but are not to be regarded or relied upon as statements or representations of fact, offers or warranties (whether expressly or impliedly) by us or our agents, and they are not intended to form part of any contract for any sale of the unit. In particular, visual representations such as layout plans, finishes, illustrations, pictures, photographs and drawings contained in the Materials are artists' impressions only and are not representation of fact. The Materials are for general guidance only and should not be relied upon as accurately describing any specific matter. All information, specifications, plans and visual representations contained in the Materials are current only as at the time of printing and are subject to changes from time to time by the developer and/or the competent authorities and shall not form part of the offer or contract. The floor plans are approximate measurements only and are subject to final survey. The Sale and Purchase Agreement shall embody all terms and conditions between the developer and the purchaser and supersedes and cancels in all aspects all previous representations, warranties, promises, inducements or statements of intention, whether written or oral made by the developer and/or the developer's agents which are not embodied in the Sale and Purchase Agreement.