

SCENECA  
景乐苑 RESIDENCE



JOINTLY DEVELOPED BY



showflat hotline: (+65) 61002500



Artist's Impression

SCENECA  
景乐苑 RESIDENCE



showflat hotline: (+65) 61002500

Sceneca (Sen-ni-kah) will set the scene for modern living. Be it enjoying resident privileges, delighting in retail therapy or benefitting from its connectivity, there's no better place to get more out of life.

This is a premium mixed-use development like no other.



# ENJOY 24/7 DIRECT LINKWAY TO THE MRT



showflat hotline: (+65) 61002500

Artist's Impression

Sceneca Residence is directly connected to Tanah Merah MRT Interchange via a 24/7 sheltered linkway, providing easy access to surrounding work nodes and lifestyle hotspots.

Sceneca Square is a commercial space located on the ground level. It includes a 10,000 sqft supermarket as well as diverse retail and F&B stores, making grocery runs or coffee breaks much more convenient and enjoyable.







showflat hotline: (+65) 61002500

SCENECA  
景乐苑 RESIDENCE

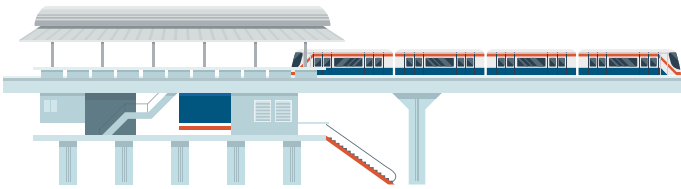
FROM VIBRANT CITYSCAPE  
TO LUSH LANDSCAPE,  
THIS IS YOUR SCENE



# CONNECTIVITY AS EASY AS 1, 2, 3

showflat hotline: (+65) 61002500

Sceneca Residence is directly connected to Tanah Merah MRT Interchange via a 24/7 linkway, providing you with greater convenience to reach a multitude of amenities and opportunities for work and play.



 Tanah Merah MRT Interchange

**SCENECA**  
景乐苑 RESIDENCE



### AMENITIES & SERVICES

- Changi General Hospital
- Singapore EXPO

### EMPLOYMENT NODES

- Changi Business Park

### MALLS

- Eastpoint Mall
- Changi City Point
- Bedok Mall

## 1 STOP

-  Bedok
-  Simei
-  Expo

2 - 10 MINS DRIVE

### AMENITIES & SERVICES

- Changi Airport
- Our Tampines Hub
- Tampines Eco Green
- Tanah Merah Country Club
- Tampines Polyclinic

### EMPLOYMENT NODES

- Tampines Regional Centre
- East Coast Integrated Depot (U/C)

### MALLS

- Jewel Changi Airport
- Tampines Mall
- Century Square
- Tampines 1

## 2 STOPS

-  Changi Airport
-  Tampines
-  Upper Changi
-  Xilin (U/C)

WITHIN 1 KM




### AMENITIES & SERVICES

- Pasir Ris Park & Beach
- Wild Wild Wet @ Downtown East
- Laguna National Golf Course
- Bedok Food Centre
- Eastwood Centre

### MALLS

- White Sands
- Downtown East

## 3 STOPS

-  Pasir Ris
-  Tampines East
-  Sungei Bedok (U/C)

WITHIN 2 KM

WITHIN 4 KM



### F&B

- East Village
- Simpang Bedok
- The Marketplace @ 58

### SUPERMARKETS

- Giant
- NTUC FairPrice
- Don Don Donki
- Eccellente
- Cold Storage

### RECREATION

- Bedok PCN (Eastern Coastal Loop)
- East Coast Park & Beach

### PRIMARY

- St. Anthony's Canossian Primary School
- Bedok Green Primary School

### SECONDARY

- Anglican High School
- St. Anthony's Canossian Secondary School
- Bedok View Secondary School
- Bedok South Secondary School

### PRIMARY

- Red Swastika School
- Temasek Primary School
- Fengshan Primary School
- Yu Neng Primary School
- Changkat Primary School

### SECONDARY

- Temasek Secondary School
- Bedok Green Secondary School
- Changkat Changi Secondary School

### TERTIARY

- Temasek Junior College
- Temasek Polytechnic
- ITE College East

### SECONDARY

- CHIJ Katong Convent
- Damai Secondary School
- Ping Yi Secondary School
- St. Patrick's School
- Tampines Secondary School
- Victoria School

### TERTIARY

- Singapore University of Technology and Design
- Victoria Junior College

### INTERNATIONAL

- United World College South East Asia (East Campus)





showflat hotline: (+65) 61002500



WE KNOW YOU KNOW...

HEAD EAST  
TO EAT,  
SHOP & PLAY



# THE EAST IS WHERE IT'S AT

showflat hotline: (+65) 61002500



Bedok, Siglap and Changi are renowned food havens, with familiar favourites found in markets, cafes and restaurants at hotspots such as Simpong Bedok and East Village.

Besides culinary delights, the east is also home to leisure and community hotspots like Wild Wild Wet, East Coast Park and Beach, Our Tampines Hub as well as Changi Airport.



A short commute will take you to thriving work nodes such as Changi Business Park, Singapore Expo, Tampines Regional Centre and Paya Lebar-Ubi Commercial Precinct.

Educational institutions in the vicinity include United World College South East Asia (East Campus) and Singapore University of Technology and Design.



# A SHOPPING PARADISE

showflat hotline: (+65) 61002500



Changi City Point, Bedok Mall, Eastpoint Mall, Jewel, Century Square, Tampines 1 and Tampines Mall are easily accessible, giving you plenty of opportunities to shop as you please.

Those who prefer to shop comfortably in bigger spaces can head over to Giant Hypermarket, Courts Megastore and IKEA Tampines, which has all you need to furnish and stock up your home with.





# GOOD THINGS ARE WORTH THE WAIT

showflat hotline: (+65) 61002500

There are several upcoming projects set to enrich life in multiple ways. Look forward to more indoor and outdoor recreational activities, as well as different retail and dining experiences that are part of these new developments in the east.



## HomeTeamNS Bedok Clubhouse

is poised as a 'waterfront haven' featuring concept villas and an indoor water adventure playground

## Tampines Cycling Network

will be tripled to 21km, to create a safer and more convenient riding experience



## Bayshore Precinct

is planned as a lifestyle waterfront residential estate with a main street lined with F&B and retail shops.



## Thomson-East Coast Line

will serve 32 MRT stations upon completion. It will bring residents in the east and along the North-South Corridor closer to the transport network, thereby ensuring faster access to the city.

## Cross Island Line

will serve existing and future developments in the eastern, western, and north-eastern corridors, connecting major hubs such as Jurong Lake District, Punggol Digital District as well as the Changi region.

## Changi Airport T5 and Changi East Urban District

will bring about greater convenience to travellers as well as provide the community with more opportunities for work and play.





showflat hotline: (+65) 61002500

STAY ON TOP...

OF EVERYTHING  
YOU NEED





# FOOD, FUN AND FASHION RIGHT AT YOUR DOORSTEP

showflat hotline: (+65) 61002500

Stay connected to convenience in more ways than one, with plenty of retail, dining and recreational amenities located within the development.



## 6AM

Start the day with an invigorating session at the Gym Room



## 8AM

Savour breakfast from one of the many dining options at Sceneca Square



## 11AM

Discover fun ways to cool off at the 50m Lap Pool



## 12PM

Shop for everyday groceries and necessities at the supermarket





showflat hotline: (+65) 61002500



1PM

Have lunch at a  
café downstairs

2PM  
Indulge in retail therapy  
at Sceneca Square



5PM

Appreciate moments  
for self-care at home



7PM

Commemorate a special  
occasion with a private  
dining experience at the  
Function Room





# RETAIL THERAPY RIGHT AT HOME

showflat hotline: (+65) 61002500

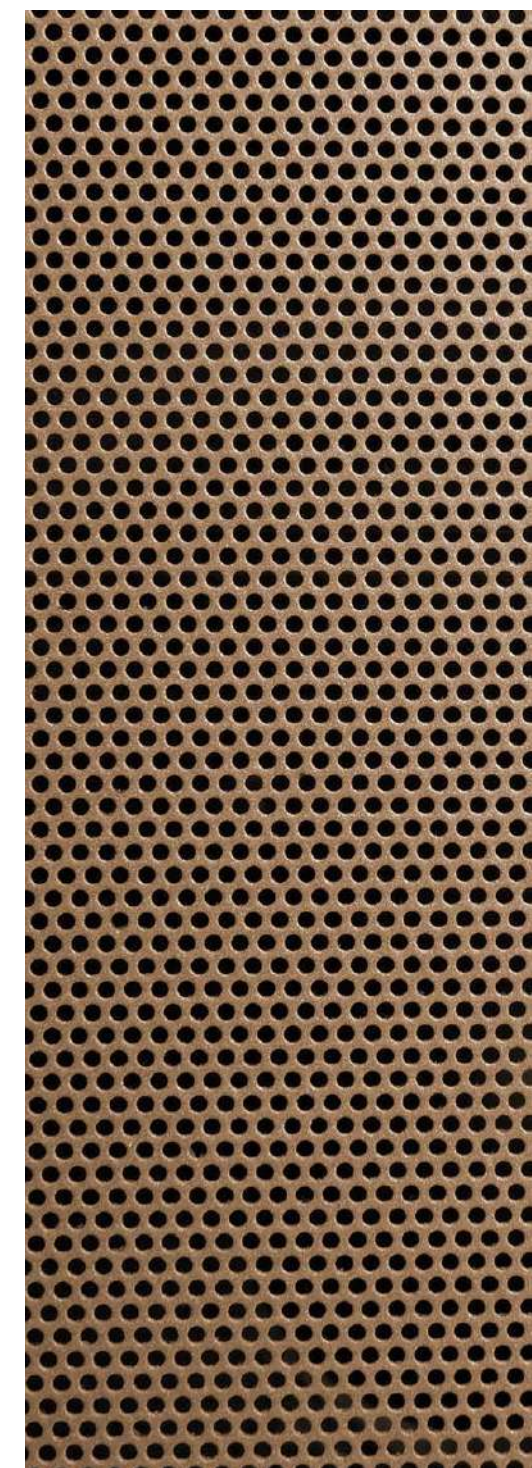
Sceneca Square caters to the needs of residents with a variety of retail shops that are simply an elevator ride away. Grocery shopping, dining dates and many other lifestyle needs can all be fulfilled conveniently and enjoyably.





# PLACES THAT ARE AN EXTENSION OF HOME

showflat hotline: (+65) 61002500



Making your way to the many F&B outlets at Sceneca Square is akin to stepping into your kitchen, where everything you crave is within reach. There are plenty of spaces for dining indoors and alfresco dining.

Event spaces have also been carefully carved out to suit different needs. Be it an open area to exercise or a site for special occasions such as weekend bazaars or festive pop-up stalls, look no further than Oasis Plaza and Event Plaza to elevate your day.



showflat hotline: (+65) 61002500

HOME IS...

WHERE YOUR  
STORY BEGINS





# WELLNESS BEGINS AT HOME

showflat hotline: (+65) 61002500

Sceneca Residence is outfitted with a variety of wellness and fitness hotspots for the family. A well-appointed Gym Room is the place for working up a sweat, but for those who prefer to exercise in cooler conditions, the 50m Lap Pool or Aqua Walk make great alternatives.

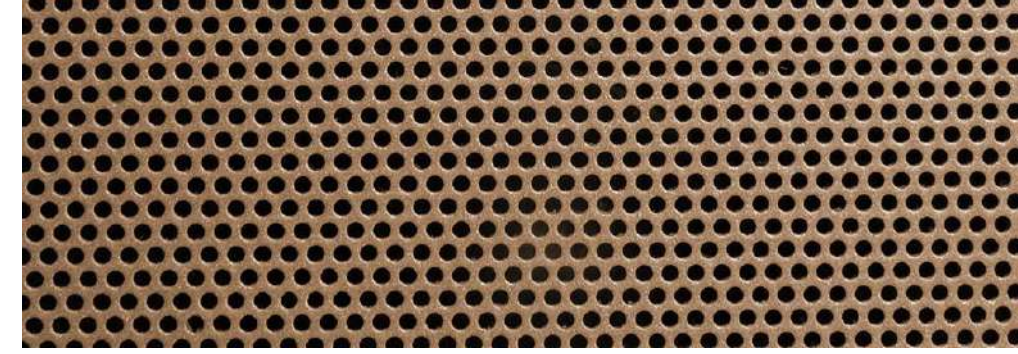
When the weather is just right, get a gorgeous tan going at the Sun Deck, or enjoy a lazy afternoon with a cool drink and good book along the Family Lounge.



Artist's Impression



# LIVE LIFE YOUR WAY



showflat hotline: (+65) 61002500



The Clubhouse is a spacious indoor lounge complemented by full-height glass windows, allowing plenty of natural sunlight in to create a cosy environment for groups to gather and unwind.

It is also furnished with a well-equipped pantry area, complemented with a vending machine that provides convenient options for residents and guests to fuel up.

The space is outfitted with power points located within reach to easily charge digital devices. Those seeking a little more serenity can make use of the unique privacy pod to study or conduct a work-from-home online meeting in comfort.



**SPACIOUS AREA TO HOST EVENTS, SUBJECT TO BOOKING AVAILABILITY**

**PRIVACY POD**

**VENDING MACHINE, REFRIGERATOR AND MICROWAVE**

**WORK COUNTER WITH BUILT-IN POWER POINTS**



# A FEAST FOR THE SENSES



showflat hotline: (+65) 61002500

The Cookout Stations located at the Festive Pavilion and Party Pavilion are perfect spots to have a splendid sunset BBQ.

Electric grills ensure ample space to grill a feast, which are comfortably built in an extensive deck area to accommodate groups of different sizes. The thoughtful addition of ceiling fans will also help to keep the space cool and airy.

Being in the alfresco space allows multiple activities to take place at once. The younger ones can enjoy their time at the Splash Pool or Playground, while everyone else indulges in good food nearby at The Lawn, Pavilions or Swing Garden.



**ELECTRIC  
GRIDDLE WITH  
ADJUSTABLE  
TEMPERATURE**



**SPLASH POOL  
AND PLAYGROUND  
NEARBY**



**HANGING  
SWING CHAIRS  
AT SWING  
GARDEN**



Artist's Impression



# ENTERTAIN OR BE ENTERTAINED, IT'S UP TO YOU

showflat hotline: (+65) 61002500



**PRIVATE SPACE TO  
HOST CULINARY  
CLASSES OR  
PERSONAL EVENTS**



**KITCHENETTE  
WITH TWO COMBI  
STEAM OVENS**



**BUILT-IN TV**

The Function Room is outfitted with a kitchenette that includes an island counter and built-in sink, induction hob with integrated hood, refrigerator and two combi steam ovens. This allows the space to be used for personal dining experiences, chef-for-hire occasions, culinary classes or any other event that comes to mind.

The room is also equipped with a wall-mounted TV that can be used to enliven events and support a wide array of activities.



Function Room

Artist's Impression

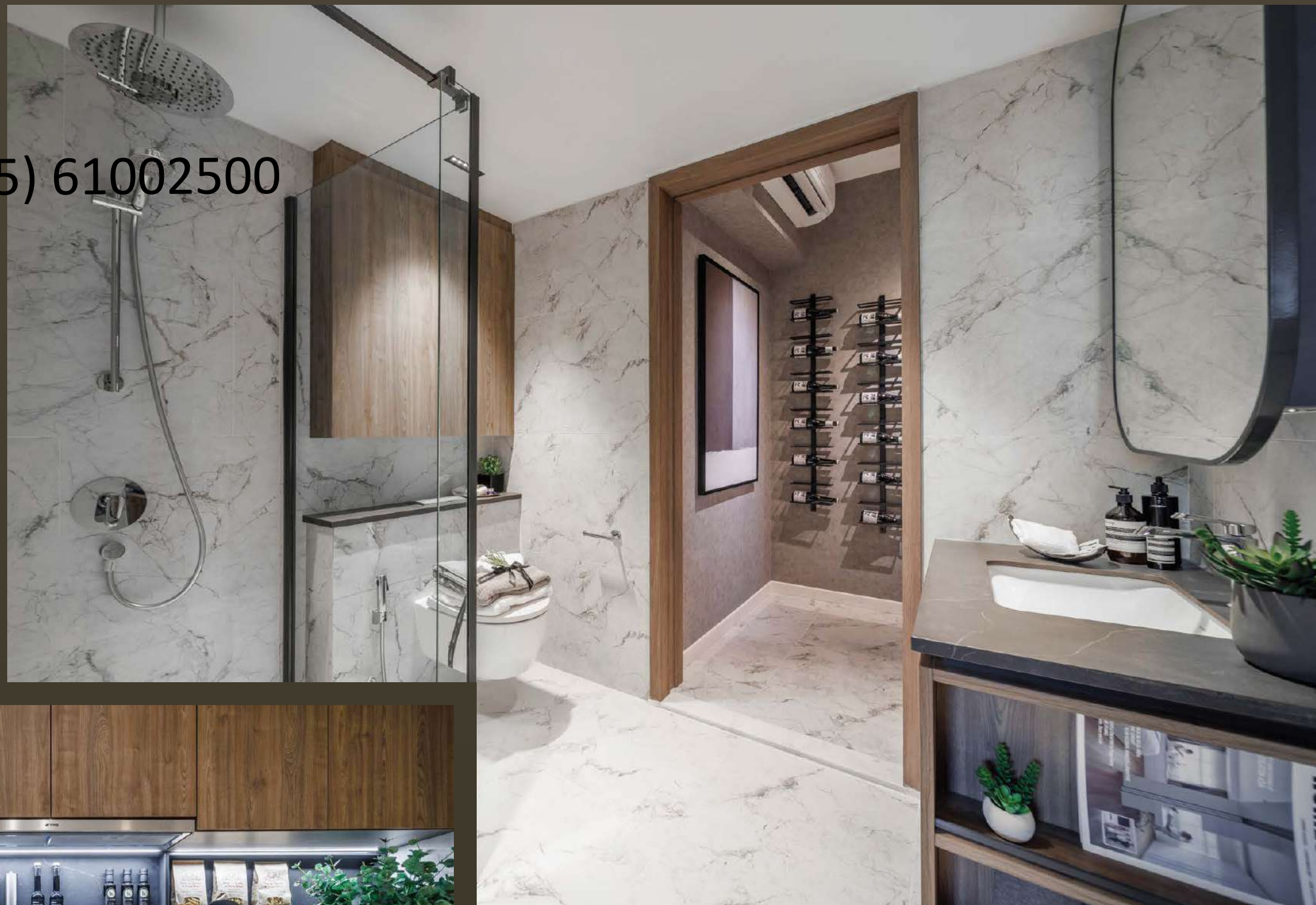


# THE DETAILS MATTER

showflat hotline: (+65) 61002500

Life upgraded comes with better furnishings too. All residential units will feature products from Swiss brand Geberit and Italian brand Newform, renowned market leaders known for premium bathroom installations and fixtures that will add a touch of class in every home.

Kitchens will also be fitted with Franke kitchen sinks, a Swiss brand that delivers craftsmanship without compromise. Distinguished Italian brand Smeg will also take pride of place in the kitchen with appliances that allow you to prepare meals with ease.

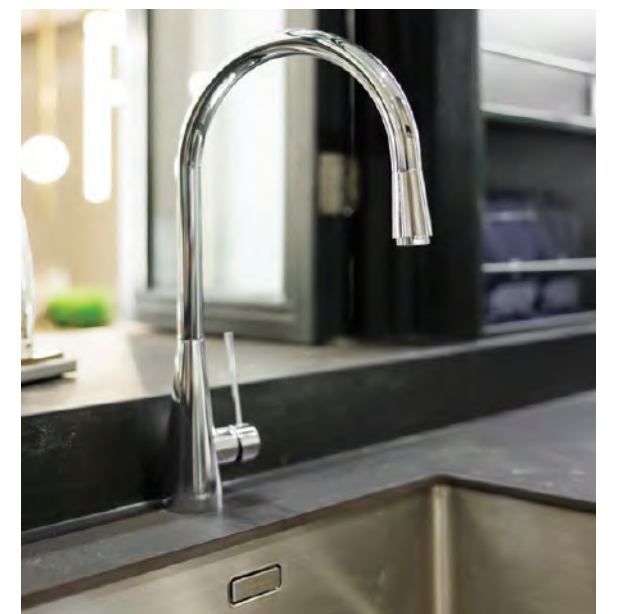


 **GEBERIT**

 – newform

 smeg

**FRANKE**



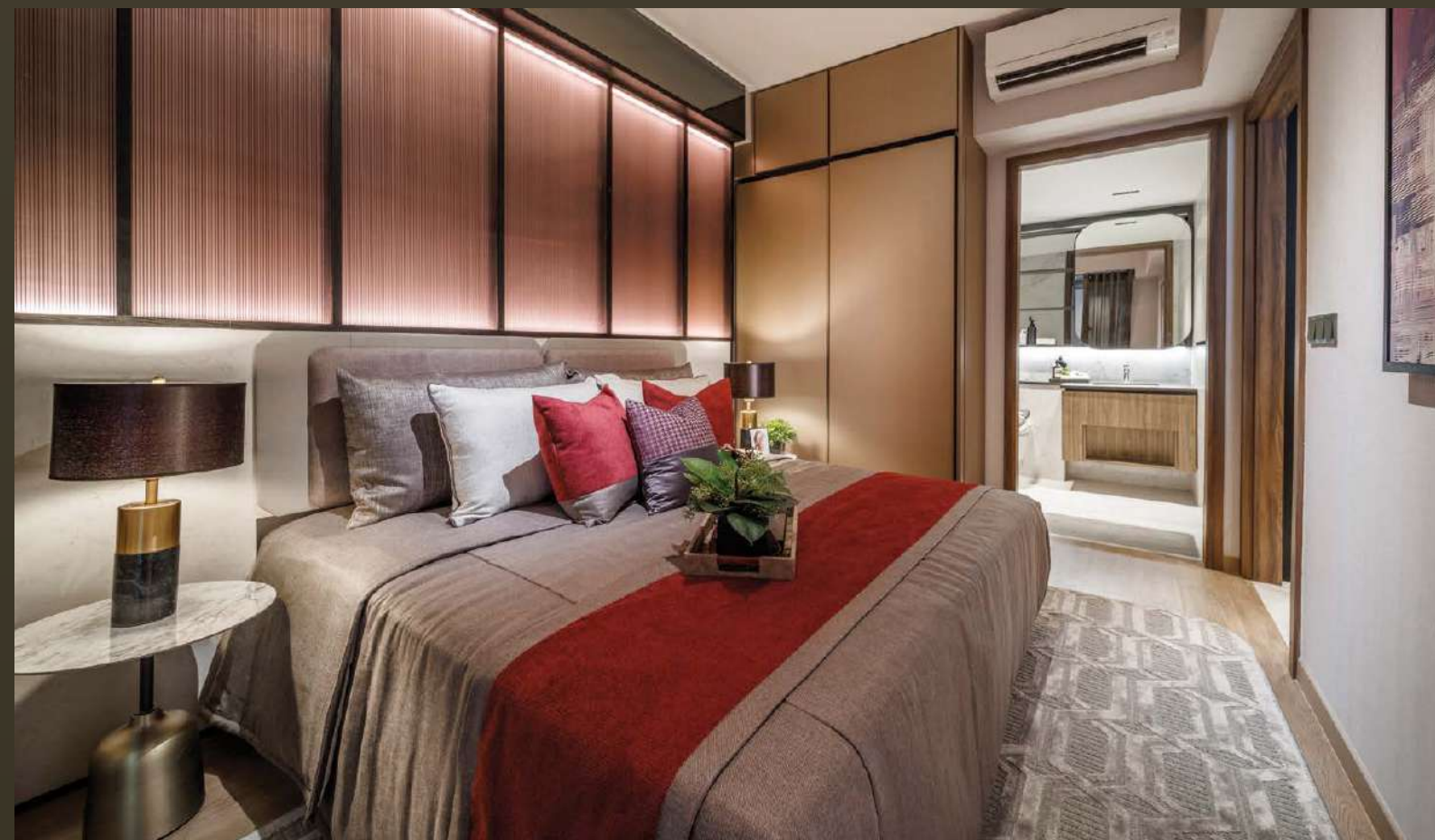


# THERE'S ALWAYS ROOM TO GROW

showflat hotline: (+65) 61002500

The development comprises two towers with 268 premium residential units, which include 1 to 4-bedroom and penthouse configurations.

Be it a home for cosy comfort or sprawling spaces to accommodate larger families, Sceneca Residence will provide the right fit for your needs.





# LIMITED EDITION LUXURY LIVING



showflat hotline: (+65) 61002500



Expansive, exquisite and very much exclusive, the 4-bedroom penthouses are designed for those who take pleasure in the finer things.

Simple lines draw attention to sophisticated spaces, which have been carefully planned to reflect your refined way of living. High ceilings create a sense of openness and splendour that extend outwards, granting you panoramic views of the surrounding area.

Beyond the luxury of space, the most coveted home also comes with the most desirable fittings. This includes brand name fixtures and designer appliances that complement creative design touches, giving you more reasons to enjoy the high life.





# SMARTER SPACES SMARTER LIVING

showflat hotline: (+65) 61002500



Get connected to a better digital life, which starts even before entering your home.

The Hafele digital lockset lets you stay keyless so you never have to worry about leaving keys behind. Access to home can be via various ways, including fingerprint, PIN code, mobile app or keycard, which can be easily stored in your wallet or phone.

Discover innovative smart home features from Fermax, a system that enables you to control home devices from your smartphone – even the simple doorbell gets a functional upgrade. With a digital doorbell, you can now see, hear and speak with whoever is at the door without having to actually be there.

Welcome home to the future.



**SMART GATEWAY**  
Smart Home System enables you to connect and control smart devices



**DIGITAL LOCK**  
Multiple ways to unlock the door without compromising security



**SMART DOORBELL**  
View who is at the door and easily communicate with them



**SMART CONTROL**  
Use your smartphone as a remote control to adjust your preferred settings

