

1-Bedroom

TYPE A1 (P)

58 sq m / 624 sq ft

BLK11 - #01-04*

BLK15 - #01-14*

BLK17 - #01-24*

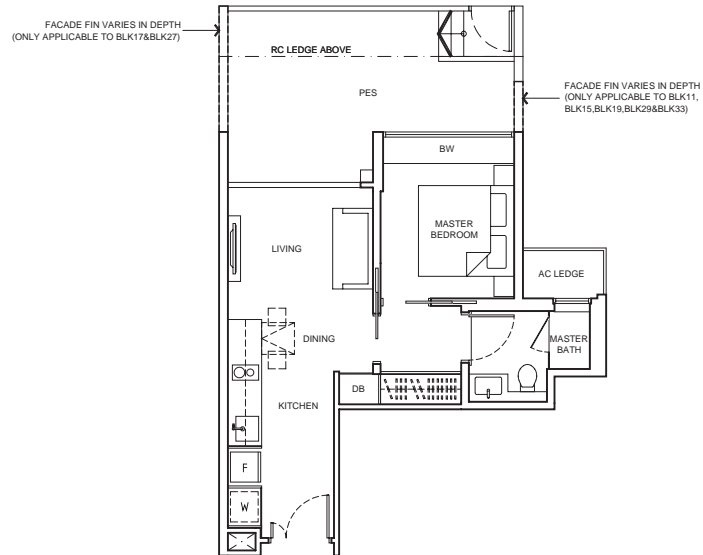
BLK19 - #01-26*

BLK23 - #01-40

BLK27 - #01-54*

BLK29 - #01-58

BLK33 - #01-67*



TYPE A1

43 sq m / 463 sq ft

BLK11 - #02-04* to #15-04*

BLK13 - #03-10 to #14-10

BLK15 - #02-14* to #13-14*

BLK17 - #02-24* to #12-24*

BLK19 - #02-26* to #13-26*

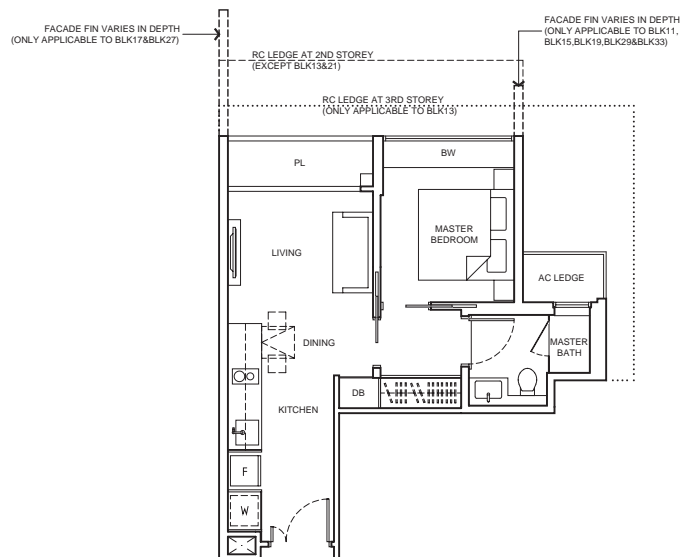
BLK21 - #03-34* to #13-34*

BLK23 - #02-40 to #14-40

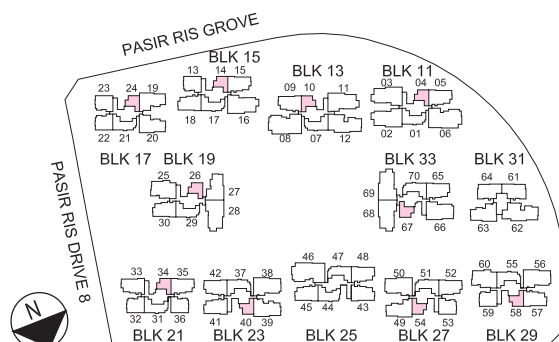
BLK27 - #02-54* to #16-54*

BLK29 - #02-58 to #16-58

BLK33 - #02-67* to #15-67*



*mirror image unit



KEYPLAN NOT TO SCALE

Area includes air-con (AC) ledge, planter (PL), bay window (BW), private enclosed space (PES), open roof terrace and void area where applicable. Some units are mirror images of the apartment plans shown in the brochure. Please refer to the key plan for orientation. The plans are subjected to change as may be approved by relevant authorities. All floor plans are approximate measurements only and are subjected to government resurvey.



2-Bedroom

TYPE B1 (P)

111 sq m / 1,195 sq ft

BLK11 - #01-01

BLK15 - #01-17

BLK17 - #01-21

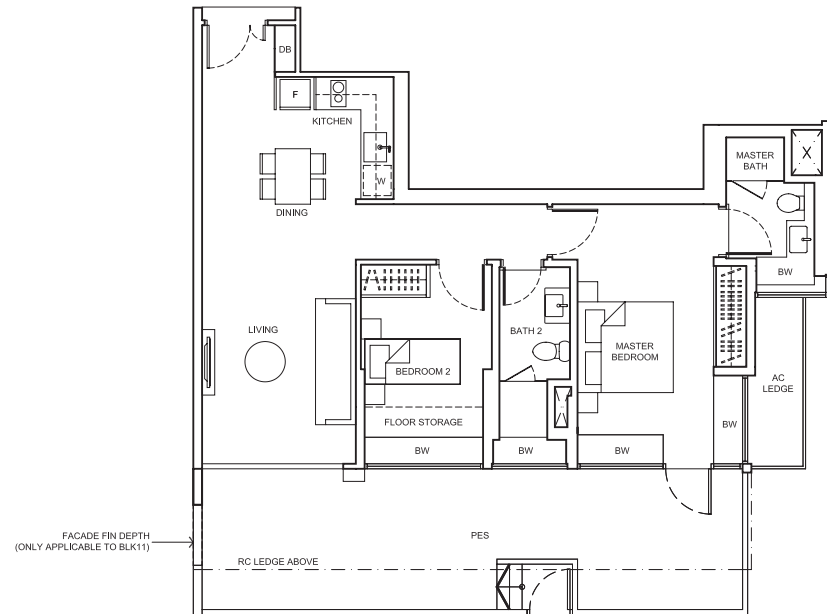
BLK19 - #01-29

BLK23 - #01-37*

BLK27 - #01-51

BLK29 - #01-55*

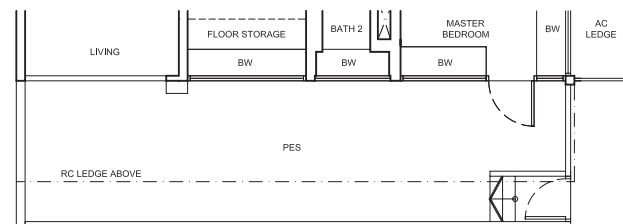
BLK33 - #01-70



TYPE B1 (P)-1

111 sq m / 1,195 sq ft

BLK25 - #01-47



TYPE B1

70 sq m / 753 sq ft

BLK11 - #02-01 to #14-01

BLK13 - #03-07* to #13-07*

BLK15 - #02-17 to #12-17

BLK17 - #02-21 to #12-21

BLK19 - #02-29 to #13-29

BLK21 - #03-31 to #13-31

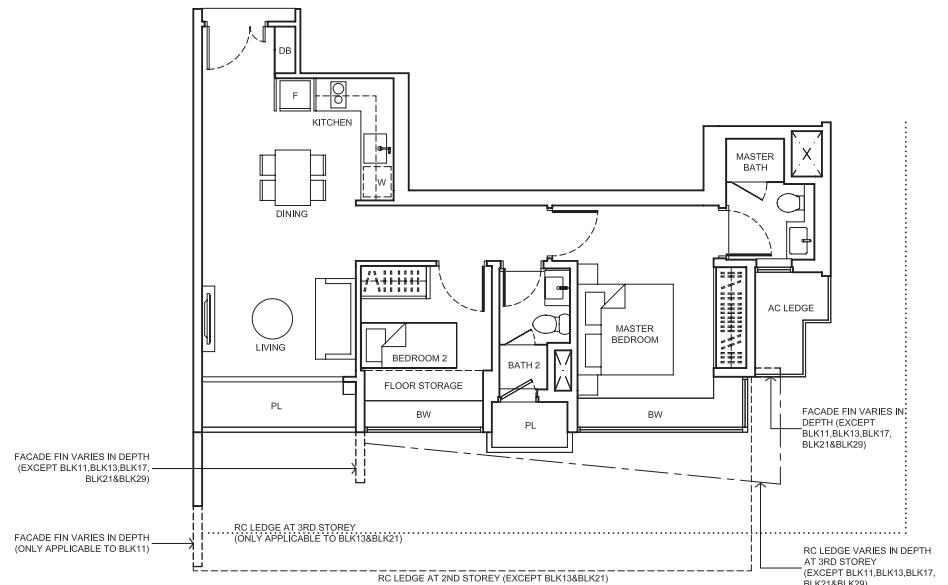
BLK23 - #02-37* to #13-37*

BLK25 - #02-47 to #13-47

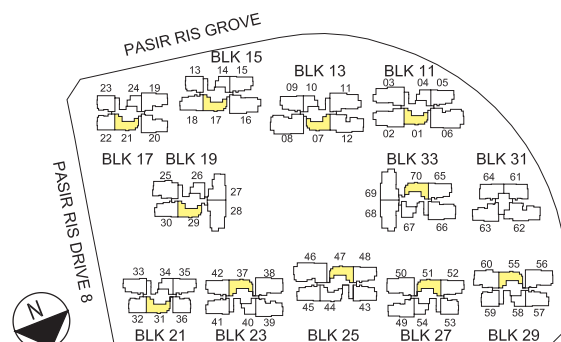
BLK27 - #02-51 to #15-51

BLK29 - #02-55* to #16-55*

BLK33 - #02-70 to #14-70



*mirror image unit



KEYPLAN NOT TO SCALE

Area includes air-con (AC) ledge, planter (PL), bay window (BW), private enclosed space (PES), open roof terrace and void area where applicable. Some units are mirror images of the apartment plans shown in the brochure. Please refer to the key plan for orientation. The plans are subjected to change as may be approved by relevant authorities. All floor plans are approximate measurements only and are subjected to government resurvey.

NOTE:
- DEPTH OF PLANTER AND FLOOR STORAGE IS APPROX. 350mm FOR ALL TYPE B1 AT 2ND STOREY.
- CEILING HEIGHT OF TYPE B1(P) & TYPE B1(P)-1 LIVING IS APPROX. 2600mm, MASTER BEDROOM AND BEDROOM 2 IS APPROX. PART 2600mm / 2900mm.



2-Bedroom

TYPE B2 (P)

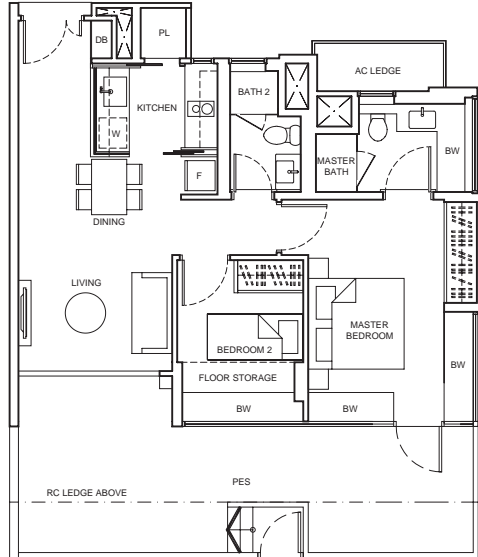
93 sq m / 1,001 sq ft

BLK15 - #01-13

BLK17 - #01-22*
#01-23

BLK27 - #01-53

BLK29 - #01-59*



TYPE B2

69 sq m / 743 sq ft

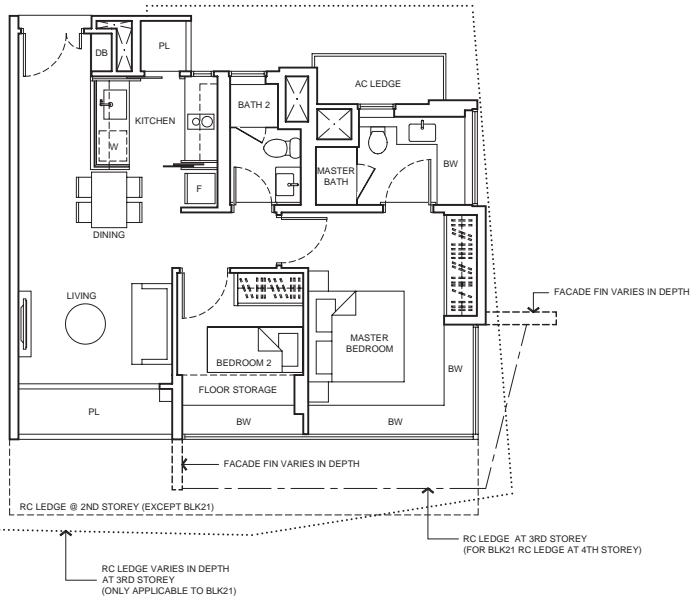
BLK15 - #02-13 to #13-13

BLK17 - #02-22* to #12-22*
#02-23 to #12-23

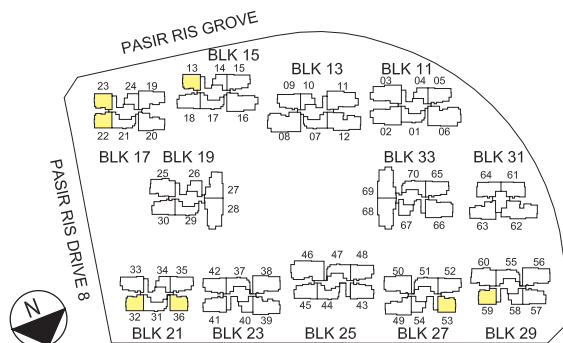
BLK21 - #03-32* to #13-32*
#03-36 to #13-36

BLK27 - #02-53 to #16-53

BLK29 - #02-59* to #16-59*



*mirror image unit



KEYPLAN NOT TO SCALE

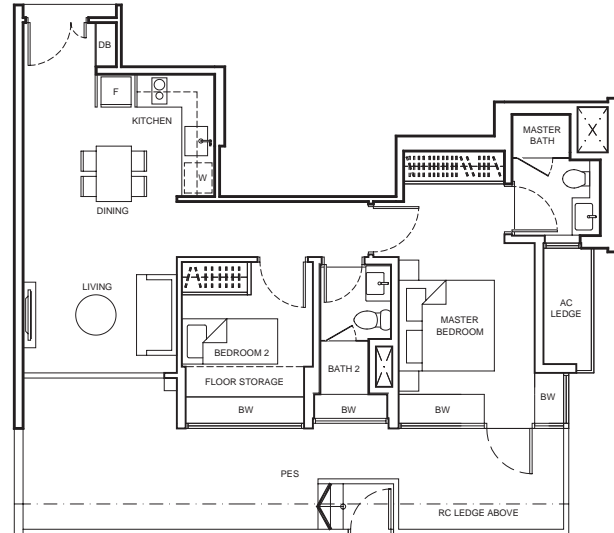
Area includes air-con (AC) ledge, planter (PL), bay window (BW), private enclosed space (PES), open roof terrace and void area where applicable. Some units are mirror images of the apartment plans shown in the brochure. Please refer to the key plan for orientation. The plans are subjected to change as may be approved by relevant authorities. All floor plans are approximate measurements only and are subjected to government resurvey.

NOTE:
- DEPTH OF PLANTER AND FLOOR STORAGE IS APPROX. 350mm
FOR TYPE B2 AT BLK17 - #02-22.

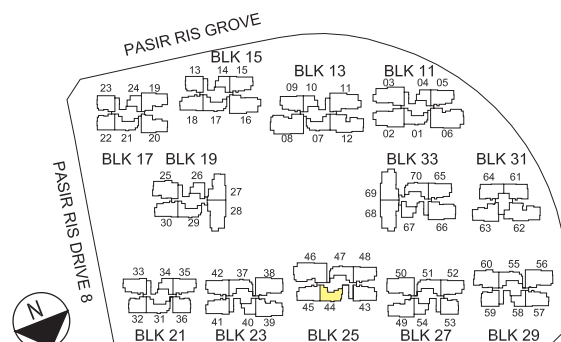
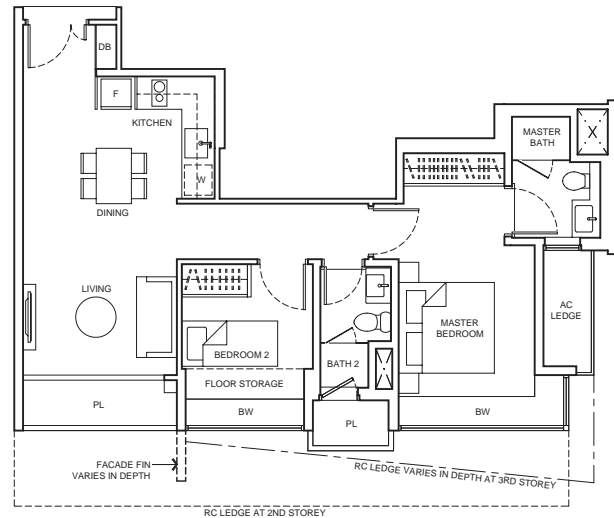


2-Bedroom

TYPE B3 (P)
91 sq m / 980 sq ft
BLK25 - #01-44



TYPE B3
69 sq m / 743 sq ft
BLK25 - #02-44 to #14-44



KEYPLAN
NOT TO SCALE

Area includes air-con (AC) ledge, planter (PL), bay window (BW), private enclosed space (PES), open roof terrace and void area where applicable. Some units are mirror images of the apartment plans shown in the brochure. Please refer to the key plan for orientation. The plans are subjected to change as may be approved by relevant authorities. All floor plans are approximate measurements only and are subjected to government resurvey.



3-Bedroom

TYPE C1 (P)

116 sq m / 1,249 sq ft

BLK11 - #01-05

BLK15 - #01-15

#01-18

BLK23 - #01-41

#01-42*

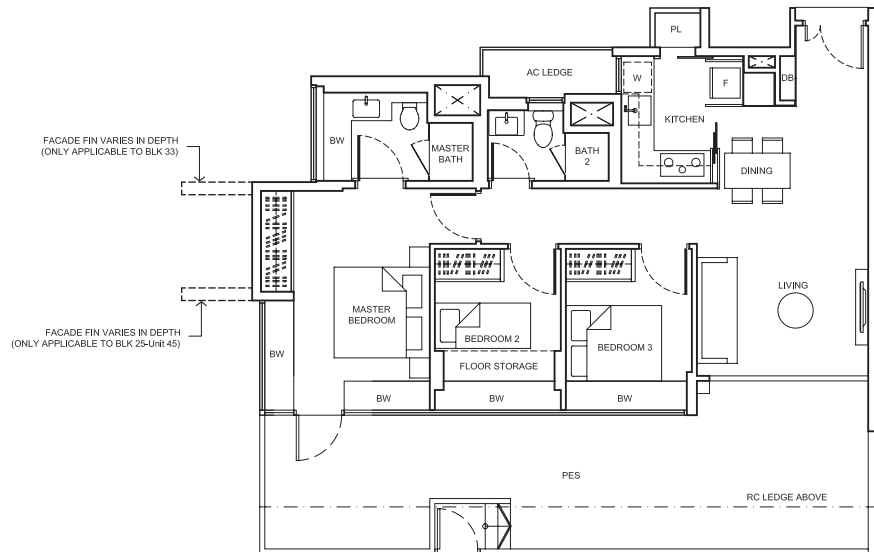
BLK25 - #01-43*

#01-45

BLK27 - #01-52

BLK29 - #01-57*

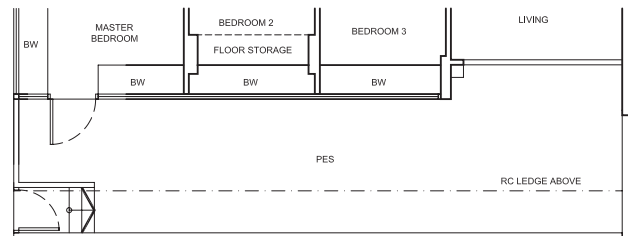
BLK33 - #01-65



TYPE C1 (P)-1

116 sq m / 1,249 sq ft

BLK25 - #01-48



TYPE C1

84 sq m / 904 sq ft

BLK11 - #02-05 to #15-05

BLK13 - #05-09* to #14-09*

BLK15 - #02-15 to #13-15

#02-18 to #12-18

BLK19 - #02-30 to #13-30

BLK21 - #03-33* to #13-33*

#03-35 to #13-35

BLK23 - #02-41 to #14-41

#02-42* to #13-42*

BLK25 - #02-43* to #14-43*

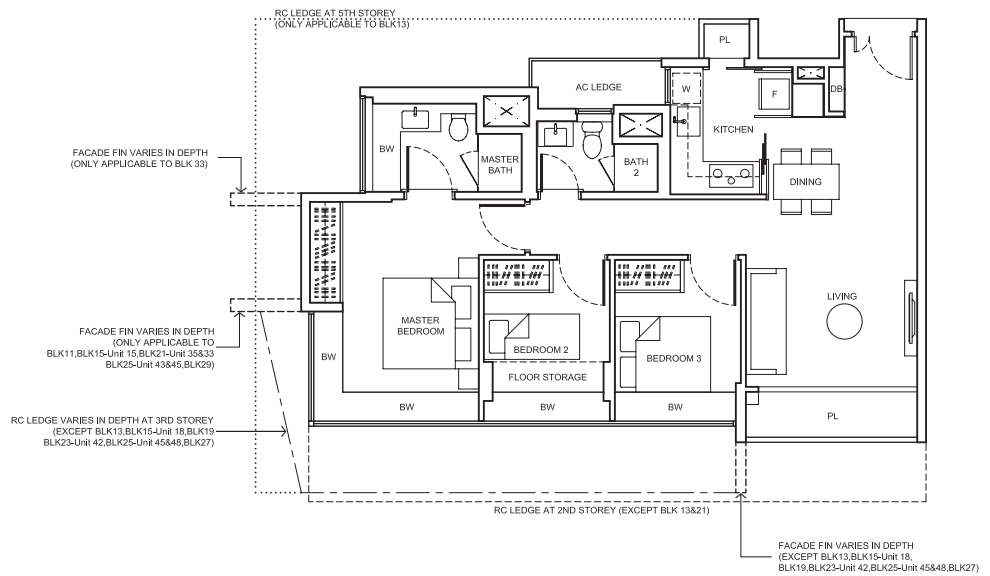
#02-45 to #14-45

#02-48 to #13-48

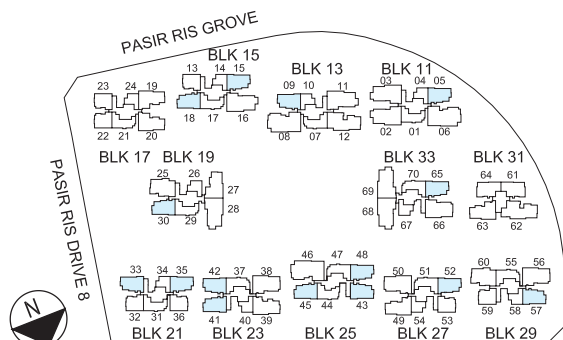
BLK27 - #02-52 to #15-52

BLK29 - #02-57* to #16-57*

BLK33 - #02-65 to #14-65



*mirror image unit

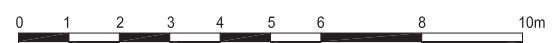


KEYPLAN NOT TO SCALE

Area includes air-con (AC) ledge, planter (PL), bay window (BW), private enclosed space (PES), open roof terrace and void area where applicable. Some units are mirror images of the apartment plans shown in the brochure. Please refer to the key plan for orientation. The plans are subjected to change as may be approved by relevant authorities. All floor plans are approximate measurements only and are subjected to government resurvey.

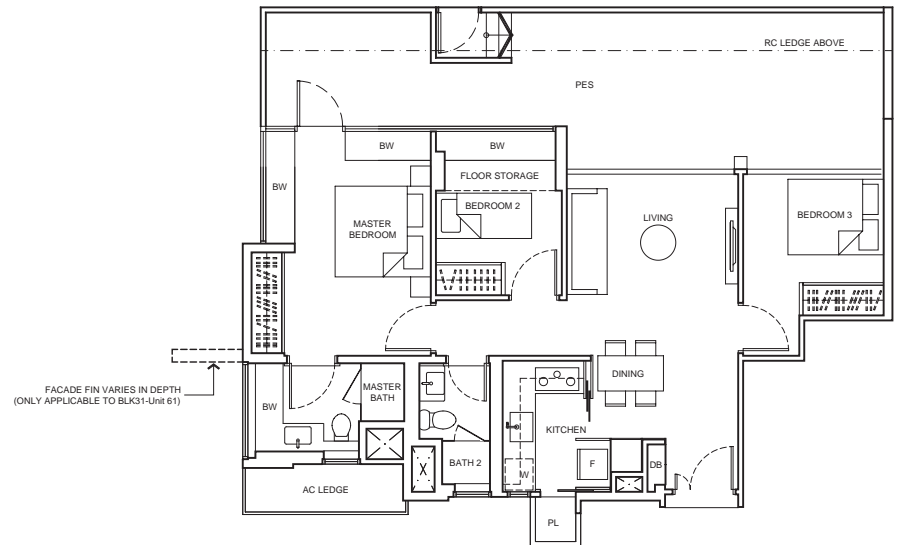
NOTE:

- DEPTH OF PLANTER AND FLOOR STORAGE IS APPROX. 350mm FOR TYPE C1 AT
- BLK15 - #02-18
- BLK19 - #02-30
- BLK23 - #02-42
- BLK25 - #02-48
- BLK27 - #02-52
- BLK33 - #02-65

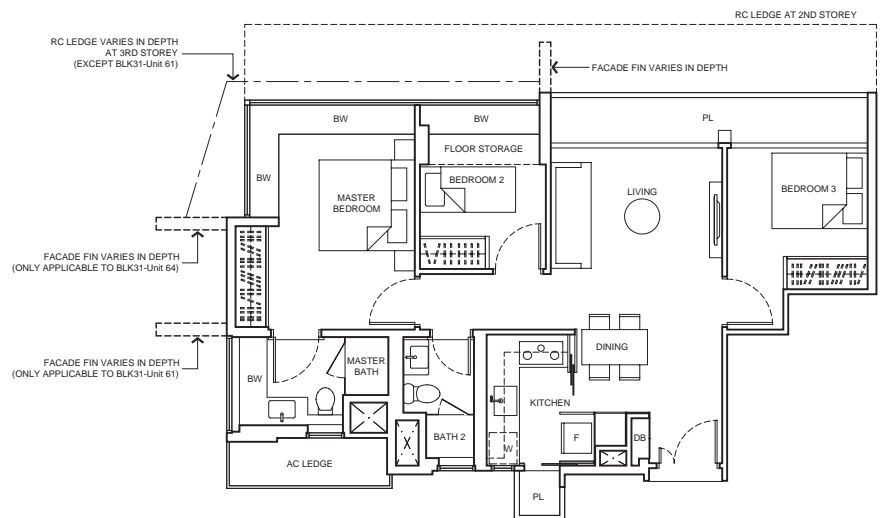


3-Bedroom

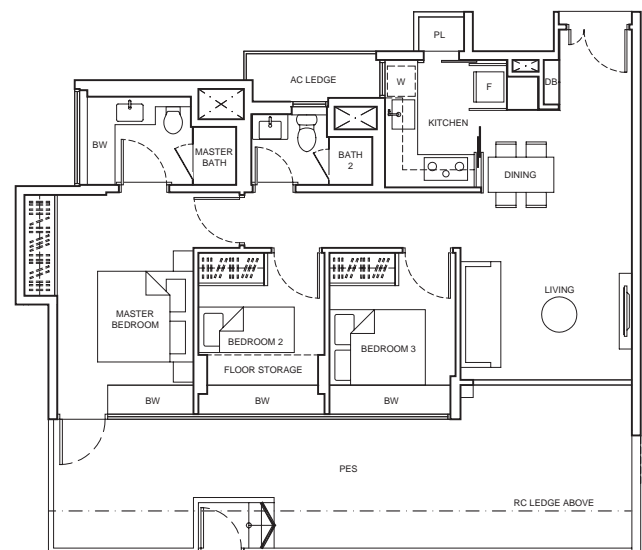
TYPE C2 (P)
113 sq m / 1,216 sq ft
BLK31 - #01-61*
#01-64



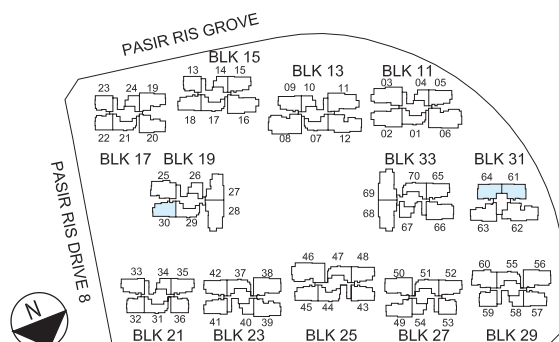
TYPE C2
85 sq m / 915 sq ft
BLK31 - #02-61* to #15-61*
#02-64 to #15-64



TYPE C4 (P)
113 sq m / 1,216 sq ft
BLK19 - #01-30



*mirror image unit



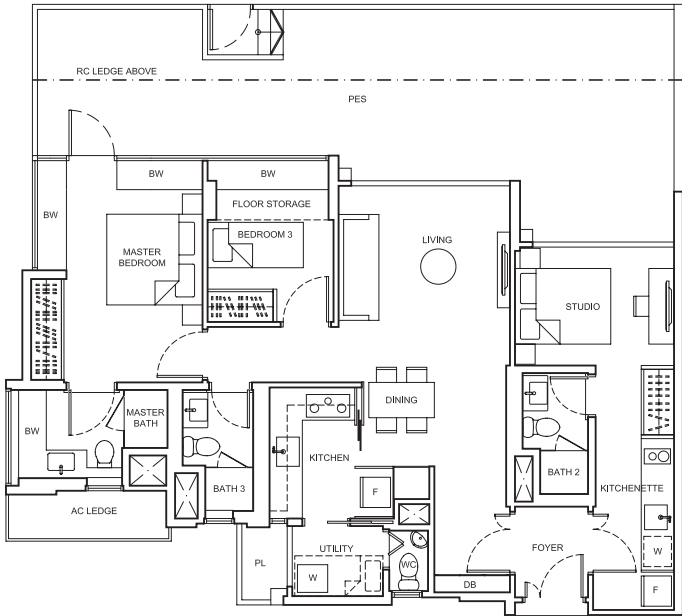
KEYPLAN
NOT TO SCALE

Area includes air-con (AC) ledge, planter (PL), bay window (BW), private enclosed space (PES), open roof terrace and void area where applicable. Some units are mirror images of the apartment plans shown in the brochure. Please refer to the key plan for orientation. The plans are subjected to change as may be approved by relevant authorities. All floor plans are approximate measurements only and are subjected to government resurvey.

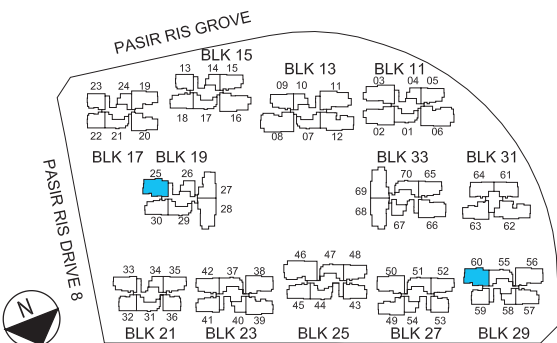
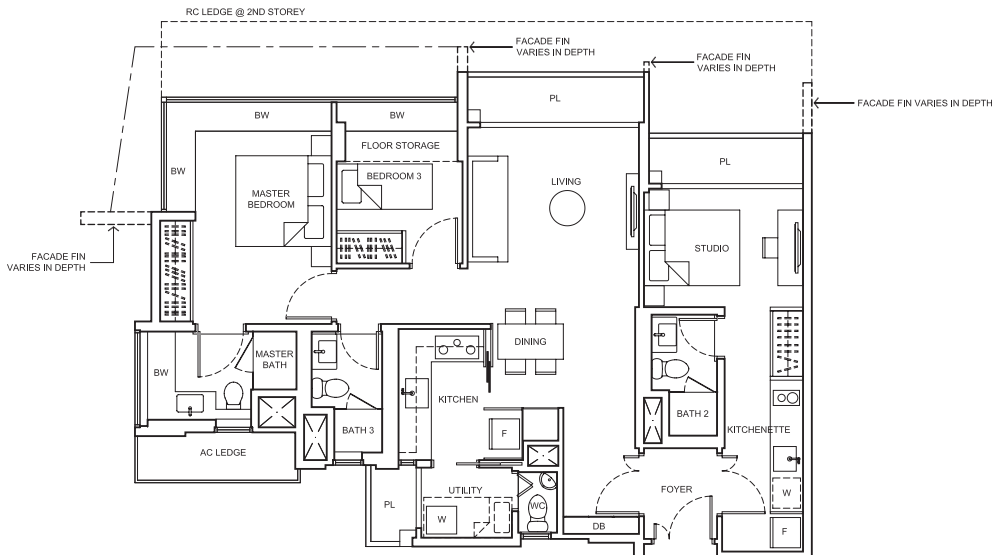


3-Bedroom Dual Key

TYPE DK1 (P)
145 sq m / 1,561 sq ft
BLK29 - #01-60



TYPE DK1
107 sq m / 1,152 sq ft
BLK19 - #02-25 to #13-25
BLK29 - #02-60 to #16-60



KEYPLAN
NOT TO SCALE

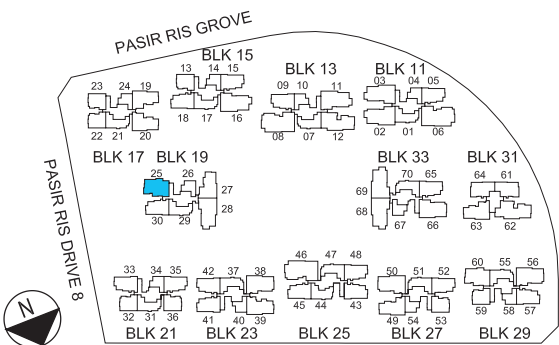
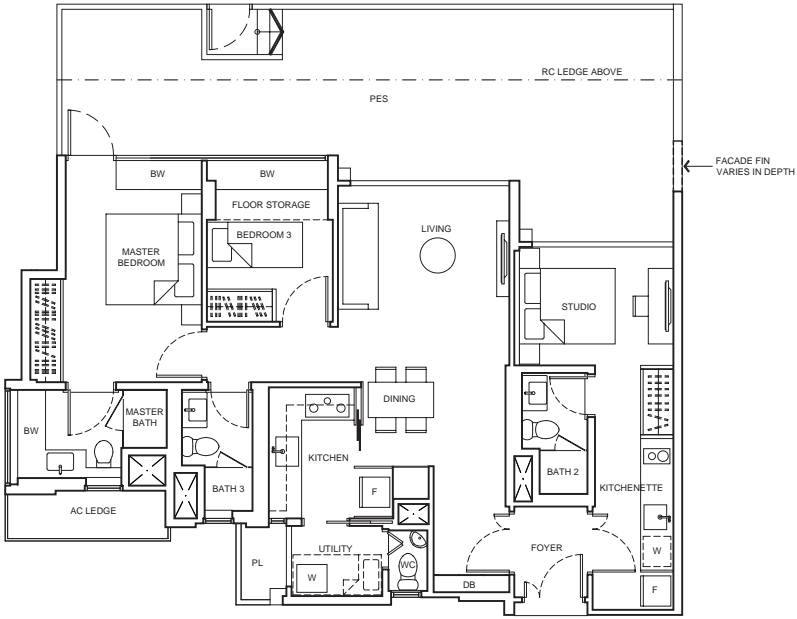
Area includes air-con (AC) ledge, planter (PL), bay window (BW), private enclosed space (PES), open roof terrace and void area where applicable. Some units are mirror images of the apartment plans shown in the brochure. Please refer to the key plan for orientation. The plans are subjected to change as may be approved by relevant authorities. All floor plans are approximate measurements only and are subjected to government resurvey.

NOTE:
- DEPTH OF PLANTER AND FLOOR STORAGE IS APPROX. 350mm
FOR TYPE DK1 AT BLK29 - #02-60



3-Bedroom Dual Key

TYPE DK2 (P)
143 sq m / 1,539 sq ft
BLK19 - #01-25



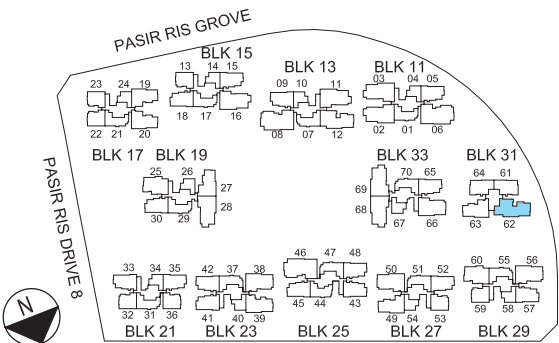
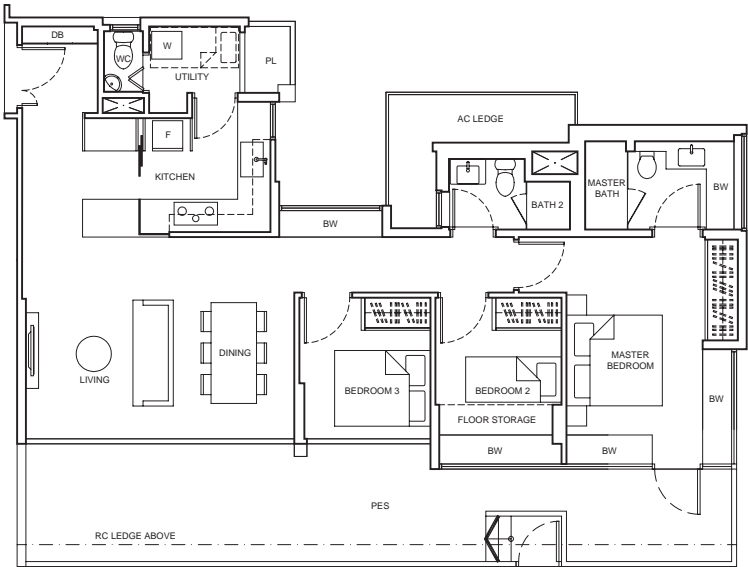
KEYPLAN
NOT TO SCALE

Area includes air-con (AC) ledge, planter (PL), bay window (BW), private enclosed space (PES), open roof terrace and void area where applicable. Some units are mirror images of the apartment plans shown in the brochure. Please refer to the key plan for orientation. The plans are subjected to change as may be approved by relevant authorities. All floor plans are approximate measurements only and are subjected to government resurvey.



3-Bedroom Suite

TYPE C3S (P)⁺
133 sq m / 1,432 sq ft
BLK31 - #01-62



KEYPLAN
NOT TO SCALE

Area includes air-con (AC) ledge, planter (PL), bay window (BW), private enclosed space (PES), open roof terrace and void area where applicable. Some units are mirror images of the apartment plans shown in the brochure. Please refer to the key plan for orientation. The plans are subjected to change as may be approved by relevant authorities. All floor plans are approximate measurements only and are subjected to government resurvey.

⁺ THE CONFIRMATION OF THE NAME OF UNIT TYPE C3 S(P) FOR UNIT #01-62 IS SUBJECT TO AUTHORITIES' APPROVAL.



3-Bedroom Suite

TYPE C4S (P)

130 sq m / 1,399 sq ft

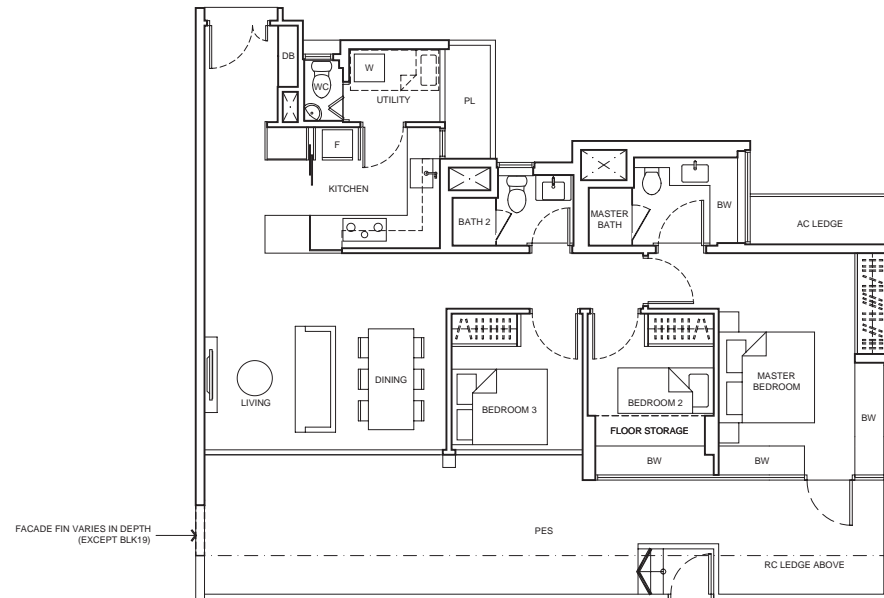
BLK17 - #01-19*

#01-20

BLK19 - #01-27

BLK27 - #01-49*

BLK31 - #01-63*



TYPE C4S

102 sq m / 1,098 sq ft

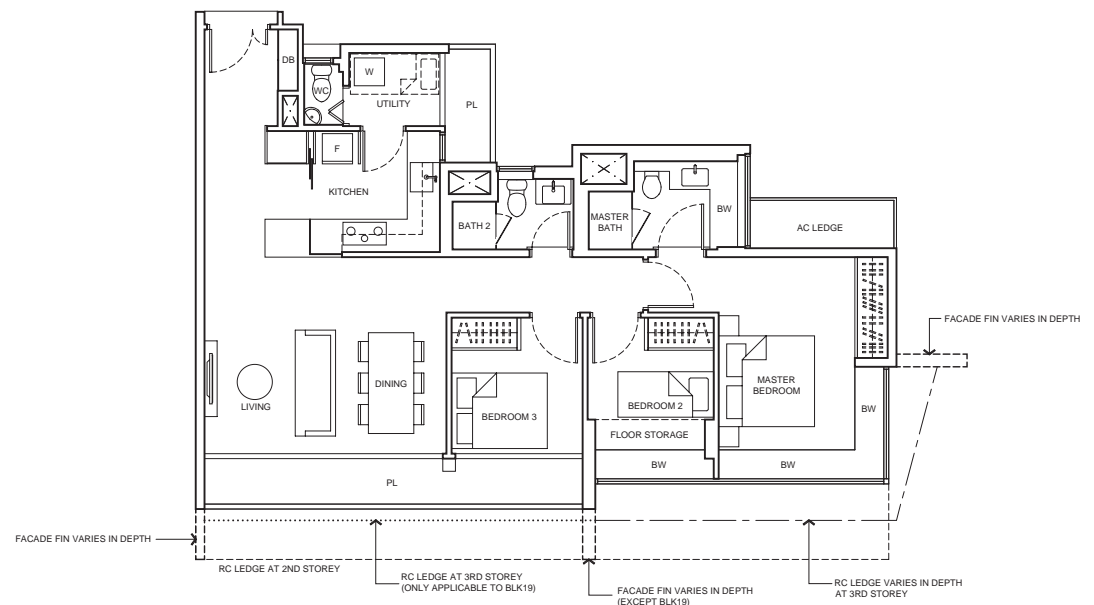
BLK17 - #02-19* to #12-19*

#02-20 to #12-20

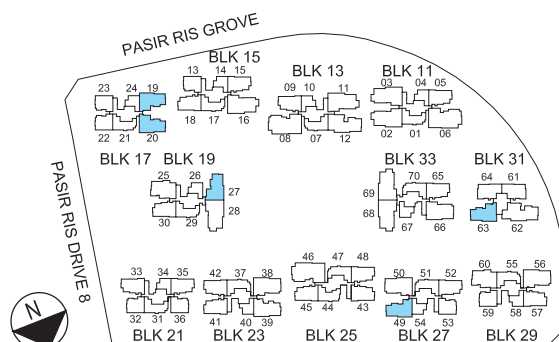
BLK19 - #02-27 to #12-27

BLK27 - #02-49* to #16-49*

BLK31 - #02-63* to #16-63*



*mirror image unit



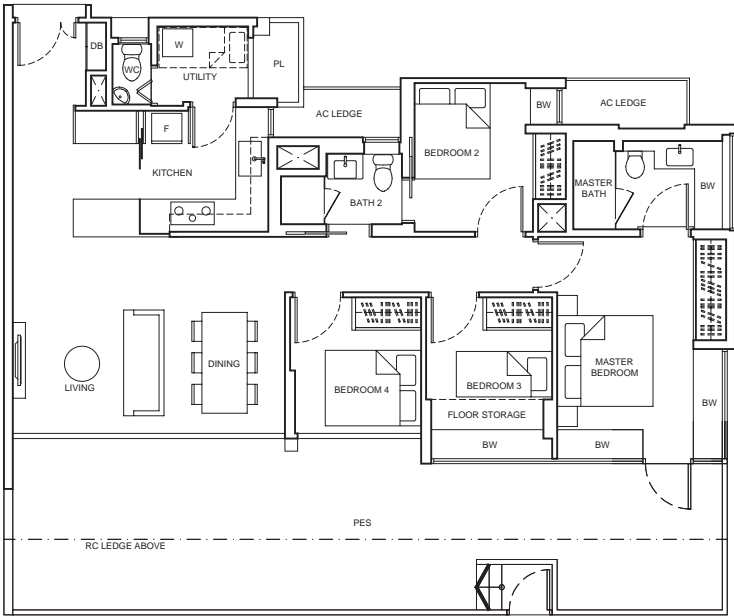
KEYPLAN NOT TO SCALE

Area includes air-con (AC) ledge, planter (PL), bay window (BW), private enclosed space (PES), open roof terrace and void area where applicable. Some units are mirror images of the apartment plans shown in the brochure. Please refer to the key plan for orientation. The plans are subjected to change as may be approved by relevant authorities. All floor plans are approximate measurements only and are subjected to government resurvey.

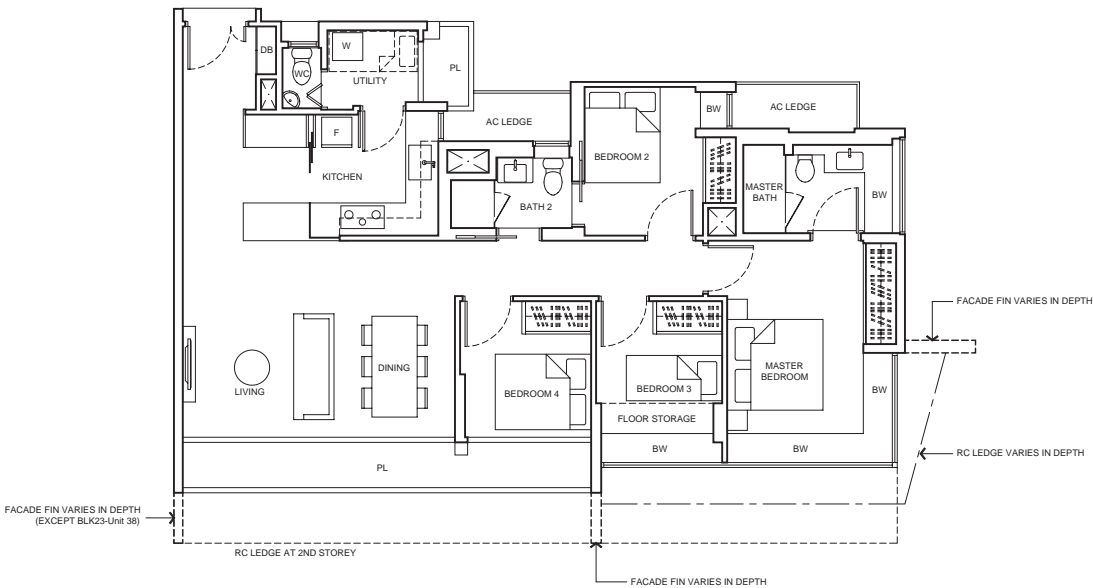


4-Bedroom

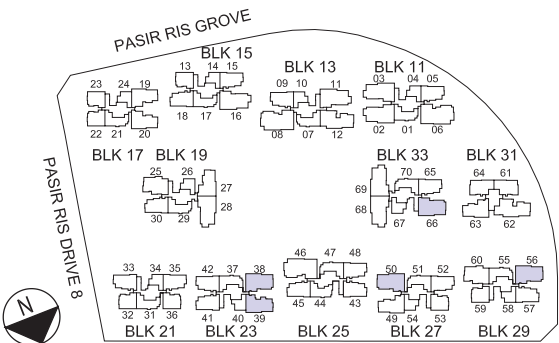
TYPE D1 (P)
155 sq m / 1,668 sq ft
BLK23 - #01-38*
 #01-39
BLK27 - #01-50
BLK29 - #01-56*
BLK33 - #01-66



TYPE D1
117 sq m / 1,259 sq ft
BLK23 - #02-38* to #12-38*
 #02-39 to #14-39
BLK27 - #02-50 to #16-50
BLK29 - #02-56* to #14-56*
BLK33 - #02-66 to #15-66



*mirror image unit



KEYPLAN
NOT TO SCALE

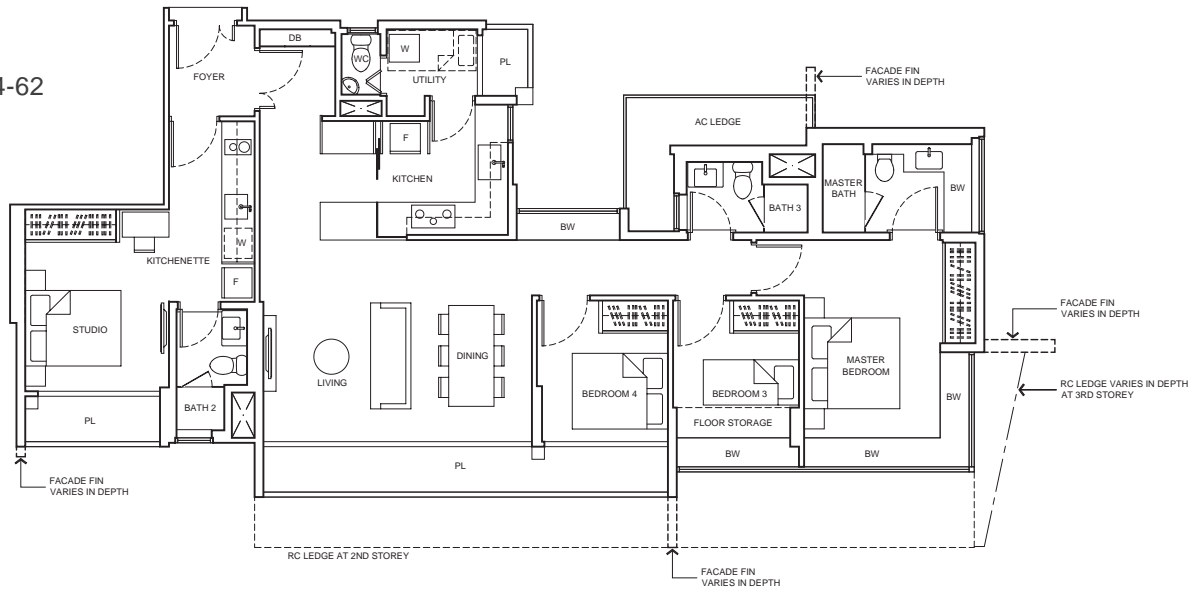
Area includes air-con (AC) ledge, planter (PL), bay window (BW), private enclosed space (PES), open roof terrace and void area where applicable. Some units are mirror images of the apartment plans shown in the brochure. Please refer to the key plan for orientation. The plans are subjected to change as may be approved by relevant authorities. All floor plans are approximate measurements only and are subjected to government resurvey.

4-Bedroom Dual Key

TYPE DK3

137 sq m / 1,475 sq ft

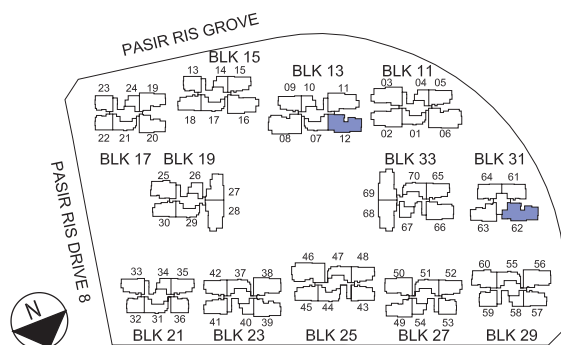
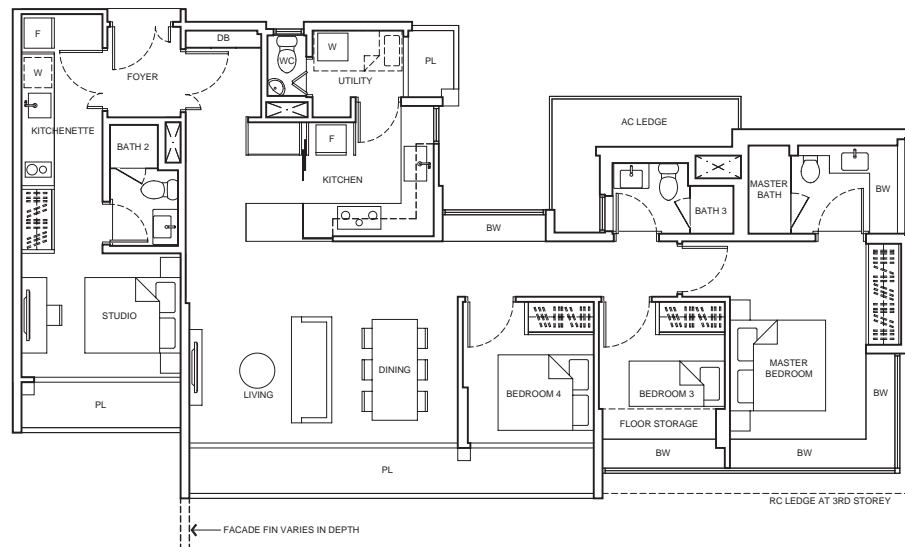
BLK31 - #02-62 to #14-62



TYPE DK4

136 sq m / 1,464 sq ft

BLK13 - #03-12 to #13-12



KEYPLAN NOT TO SCALE

Area includes air-con (AC) ledge, planter (PL), bay window (BW), private enclosed space (PES), open roof terrace and void area where applicable. Some units are mirror images of the apartment plans shown in the brochure. Please refer to the key plan for orientation. The plans are subjected to change as may be approved by relevant authorities. All floor plans are approximate measurements only and are subjected to government resurvey.



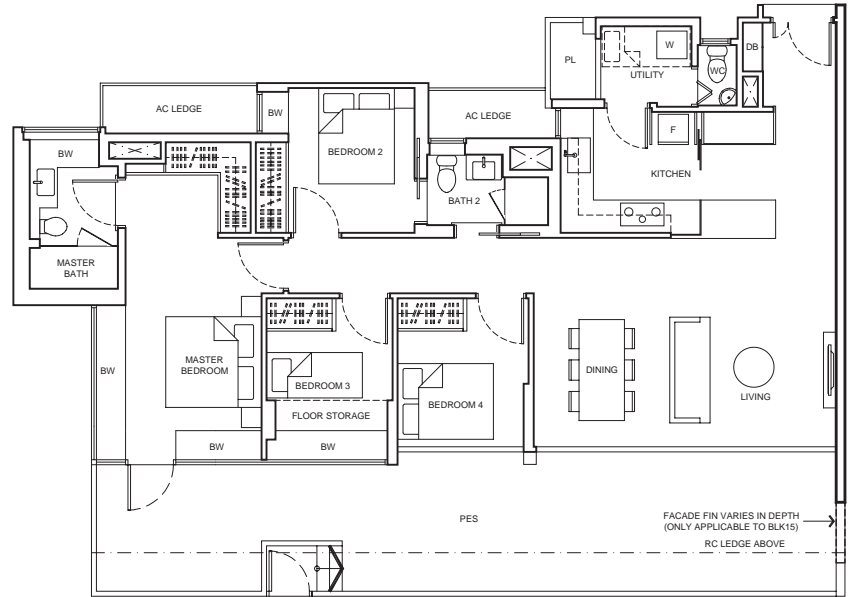
4-Bedroom Suite

TYPE D2S (P)

160 sq m / 1,722 sq ft

BLK15 - #01-16*

BLK19 - #01-28

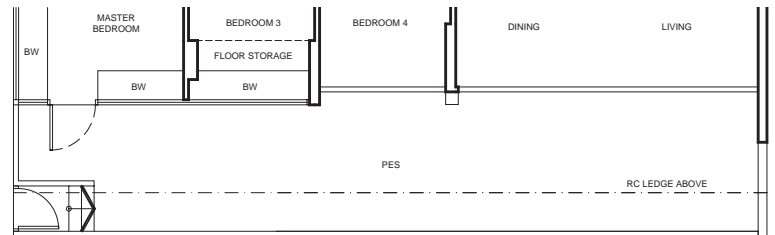


TYPE D2S (P)-1+

160 sq m / 1,722 sq ft

BLK33 - #01-68*

#01-69



TYPE D2S

128 sq m / 1,378 sq ft

BLK11 - #03-02 to #14-02

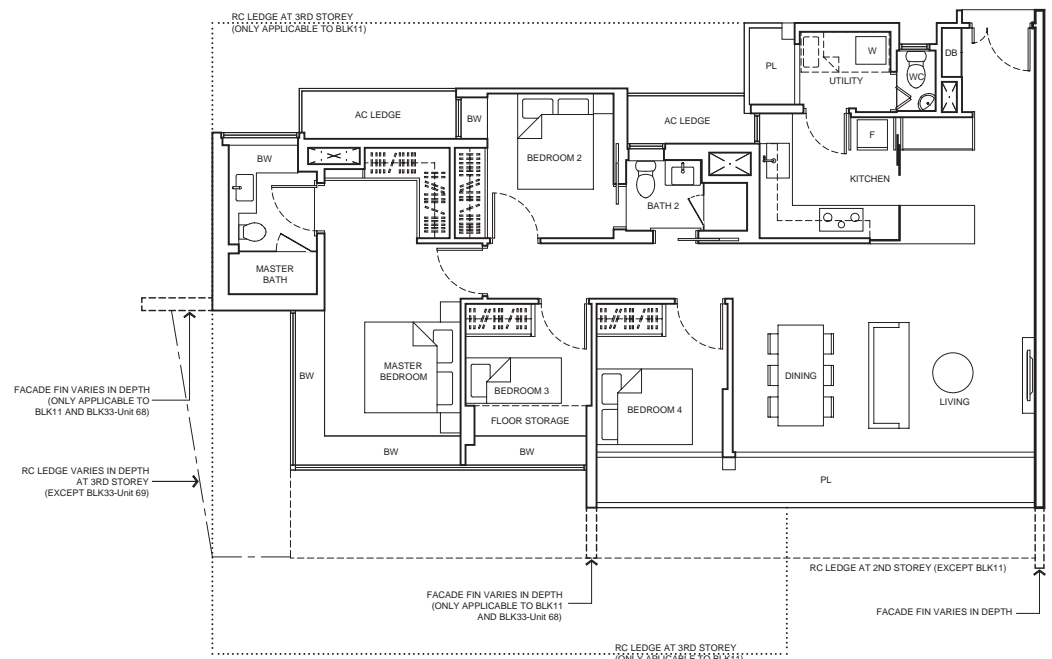
#03-03* to #15-03*

BLK15 - #02-16* to #11-16*

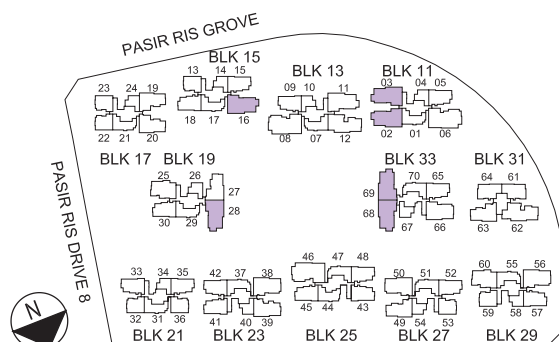
BLK19 - #02-28 to #12-28

BLK33 - #02-68* to #14-68*

#02-69 to #14-69



*mirror image unit



KEYPLAN NOT TO SCALE

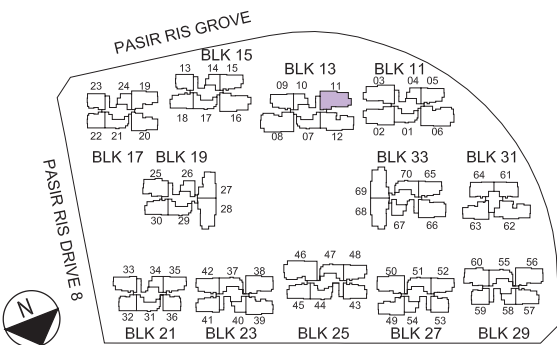
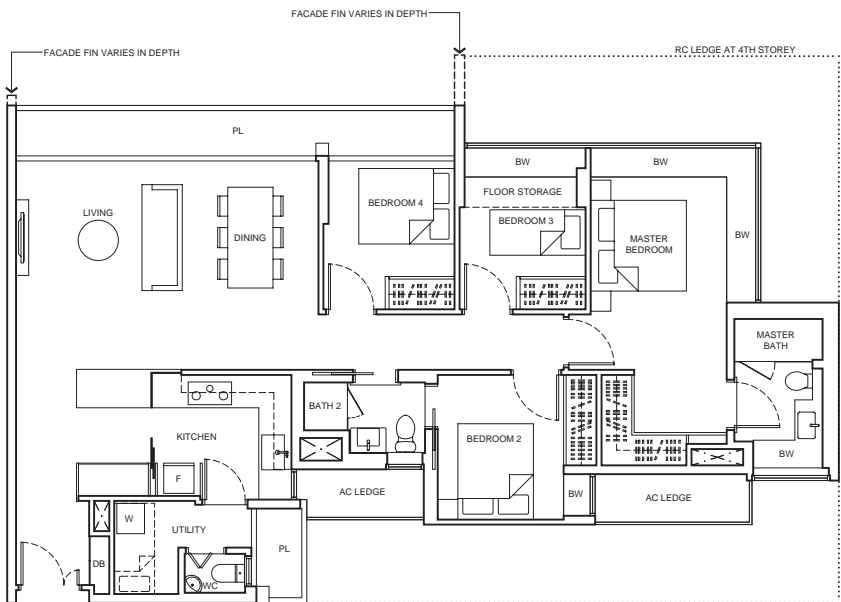
Area includes air-con (AC) ledge, planter (PL), bay window (BW), private enclosed space (PES), open roof terrace and void area where applicable. Some units are mirror images of the apartment plans shown in the brochure. Please refer to the key plan for orientation. The plans are subjected to change as may be approved by relevant authorities. All floor plans are approximate measurements only and are subjected to government resurvey.

* THE CONFIRMATION OF THE NAME OF UNIT TYPE D2S (P)-1 FOR UNIT #01-68 AND #01-69 IS SUBJECT TO AUTHORITIES' APPROVAL



4-Bedroom Suite

TYPE D3S
129 sq m / 1,389 sq ft
BLK13 - #04-11 to #14-11



KEYPLAN NOT TO SCALE

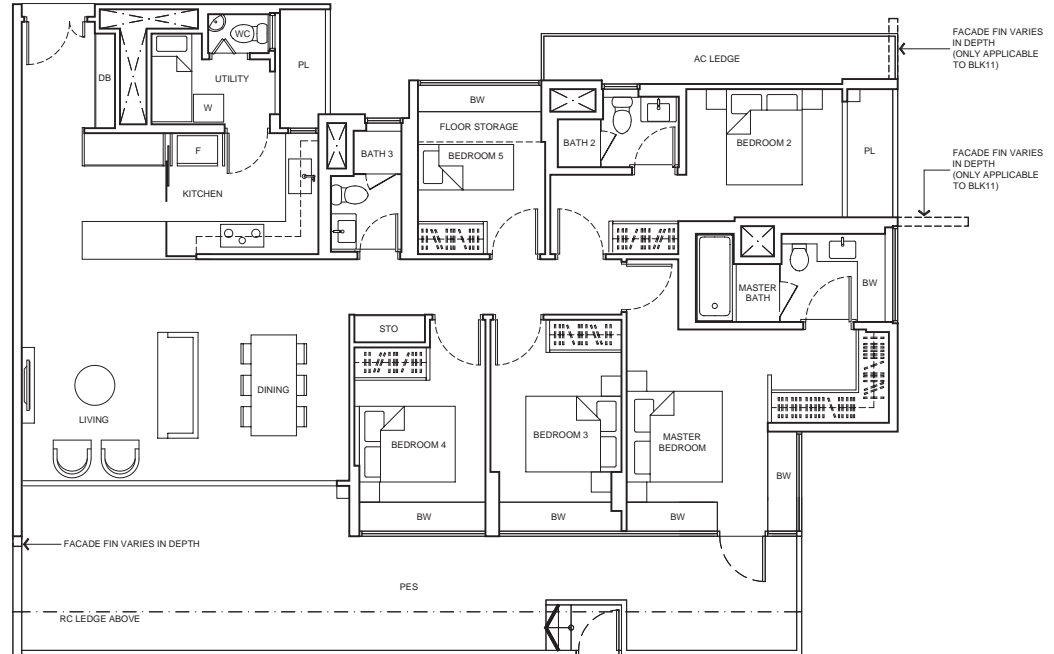
Area includes air-con (AC) ledge, planter (PL), bay window (BW), private enclosed space (PES), open roof terrace and void area where applicable. Some units are mirror images of the apartment plans shown in the brochure. Please refer to the key plan for orientation. The plans are subjected to change as may be approved by relevant authorities. All floor plans are approximate measurements only and are subjected to government resurvey.



5-Bedroom

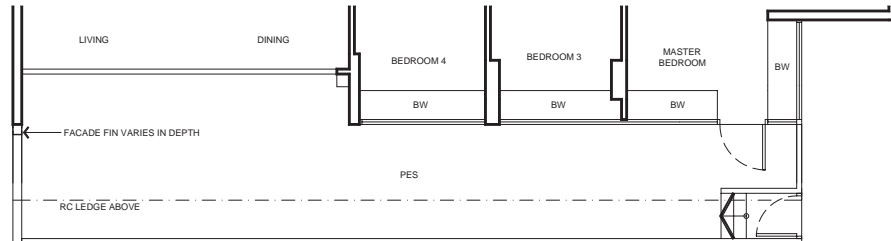
TYPE E1 (P)

199 sq m / 2,142 sq ft
BLK11 - #01-06



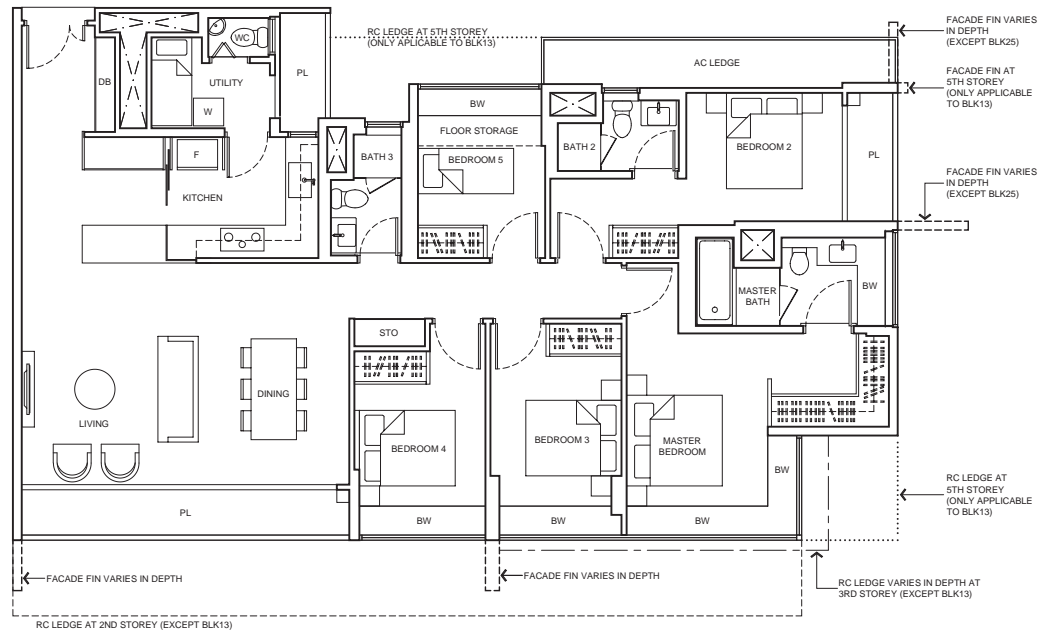
TYPE E1 (P)-1

199 sq m / 2,142 sq ft
BLK25 - #01-46

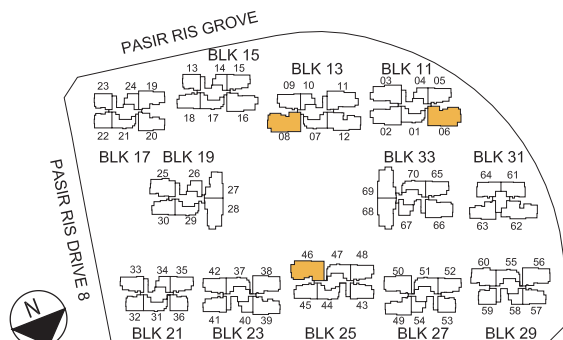


TYPE E1

162 sq m / 1,744 sq ft
BLK11 - #02-06 to #13-06
BLK13 - #05-08* to #12-08*
BLK25 - #02-46 to #12-46



*mirror image unit



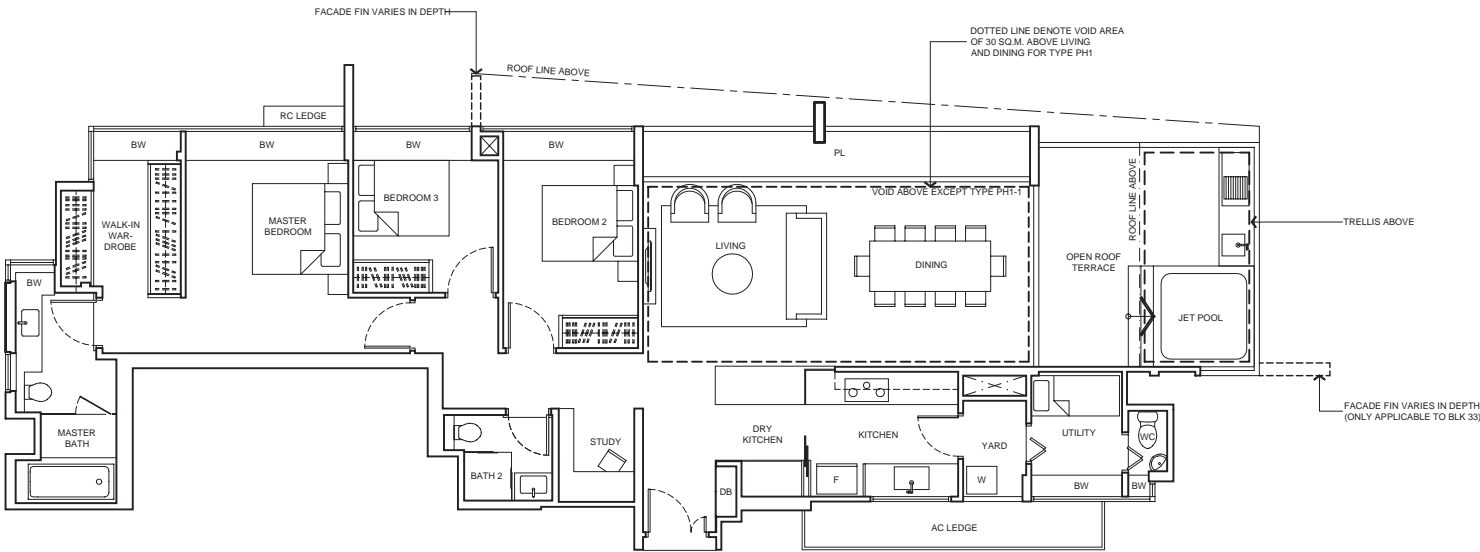
KEYPLAN NOT TO SCALE

Area includes air-con (AC) ledge, planter (PL), bay window (BW), private enclosed space (PES), open roof terrace and void area where applicable. Some units are mirror images of the apartment plans shown in the brochure. Please refer to the key plan for orientation. The plans are subjected to change as may be approved by relevant authorities. All floor plans are approximate measurements only and are subjected to government resurvey.

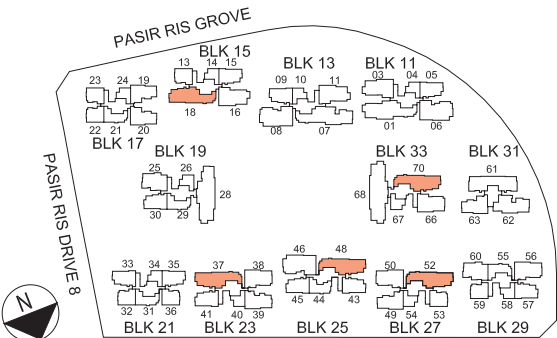
Penthouse (3-Bedroom + Study)

TYPE PH1
192 sq m / 2,067 sq ft
(including 30 sq m / 323 sq ft void)
BLK15 - #13-18
BLK25 - #14-48
BLK27 - #16-52
BLK33 - #15-70

TYPE PH1-1
162 sq m / 1,744 sq ft
BLK23 - #14-37*

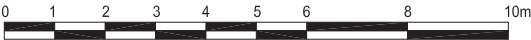


*mirror image unit



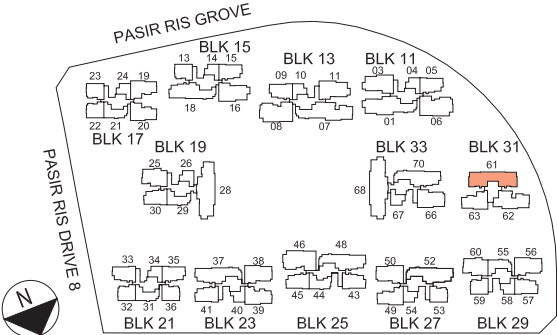
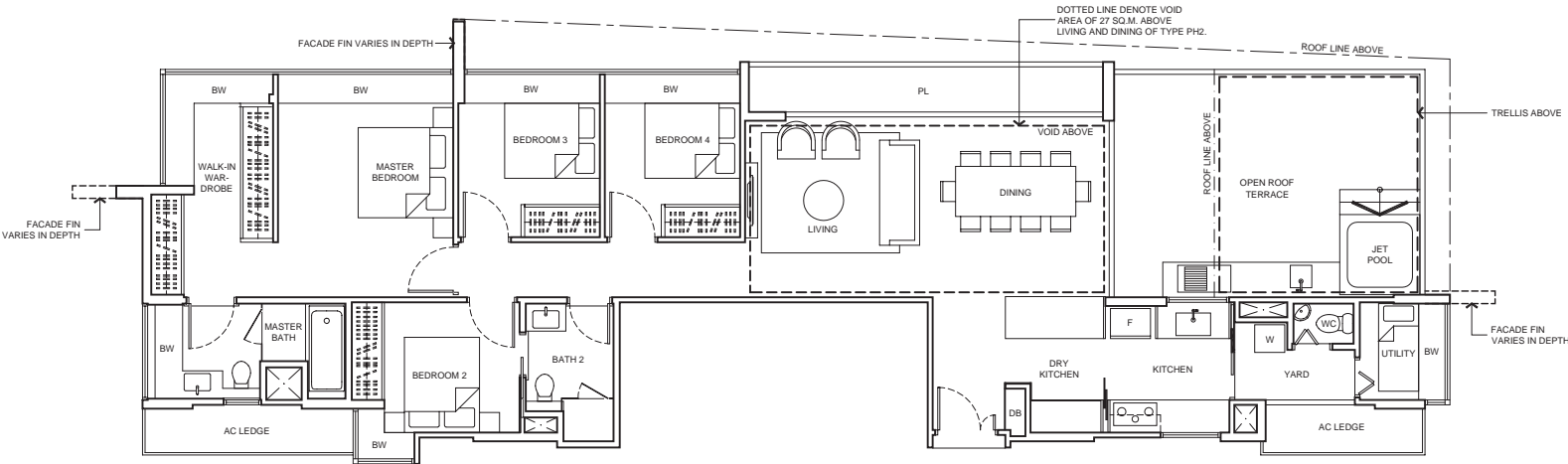
KEYPLAN
NOT TO SCALE

Area includes air-con (AC) ledge, planter (PL), bay window (BW), private enclosed space (PES), open roof terrace and void area where applicable. Some units are mirror images of the apartment plans shown in the brochure. Please refer to the key plan for orientation. The plans are subjected to change as may be approved by relevant authorities. All floor plans are approximate measurements only and are subjected to government resurvey.



Penthouse (4-Bedroom)

TYPE PH2
200 sq m / 2,153 sq ft
(including 27 sq m / 291 sq ft void)
BLK31 - #16-61



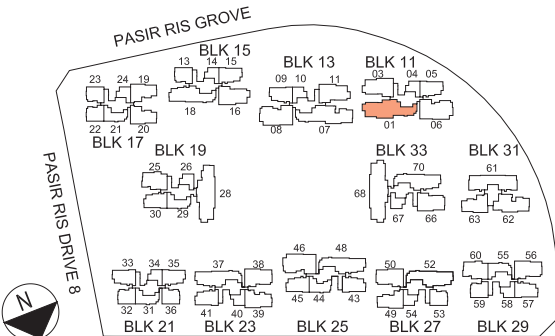
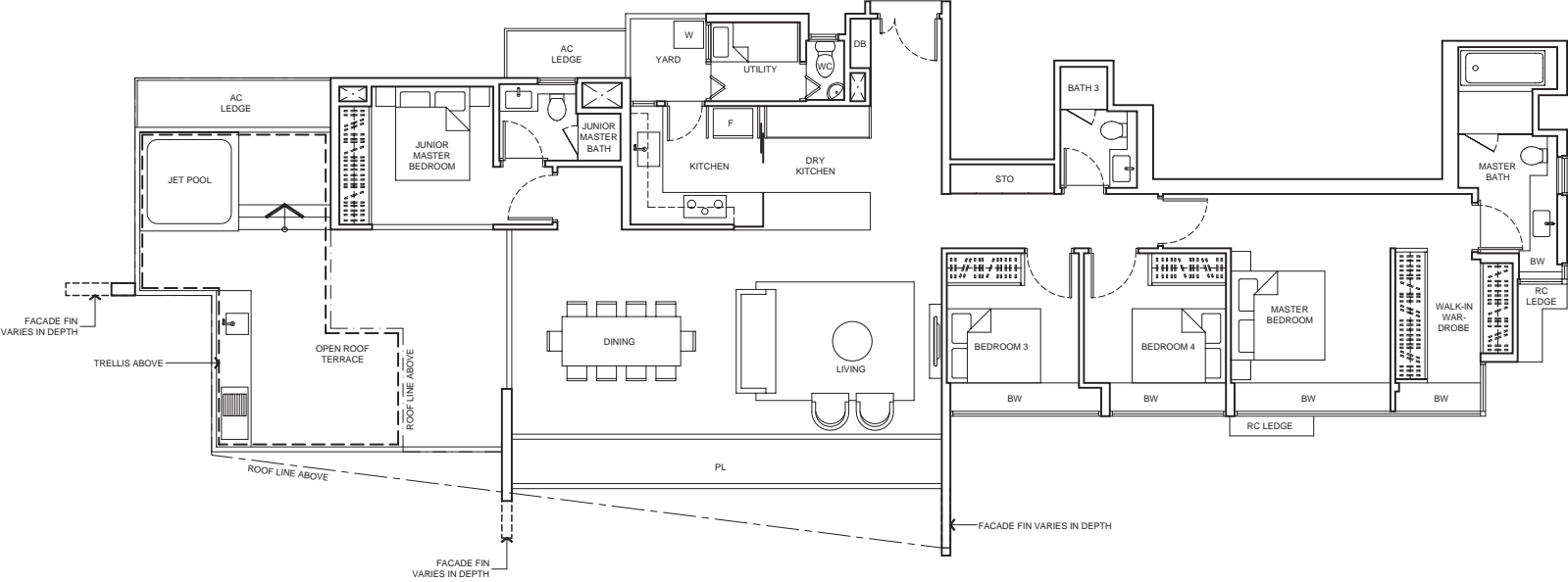
KEYPLAN
NOT TO SCALE

Area includes air-con (AC) ledge, planter (PL), bay window (BW), private enclosed space (PES), open roof terrace and void area where applicable. Some units are mirror images of the apartment plans shown in the brochure. Please refer to the key plan for orientation. The plans are subjected to change as may be approved by relevant authorities. All floor plans are approximate measurements only and are subjected to government resurvey.



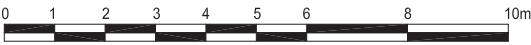
Penthouse (4-Bedroom)

TYPE PH3
199 sq m / 2,142 sq ft
BLK11 - #15-01



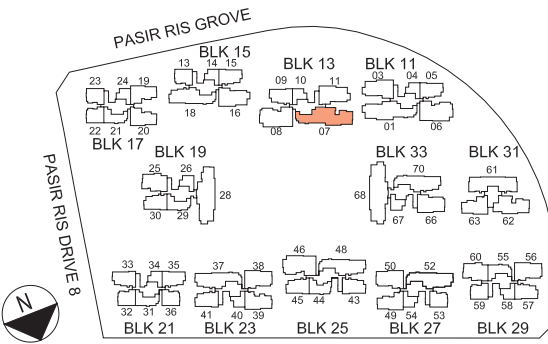
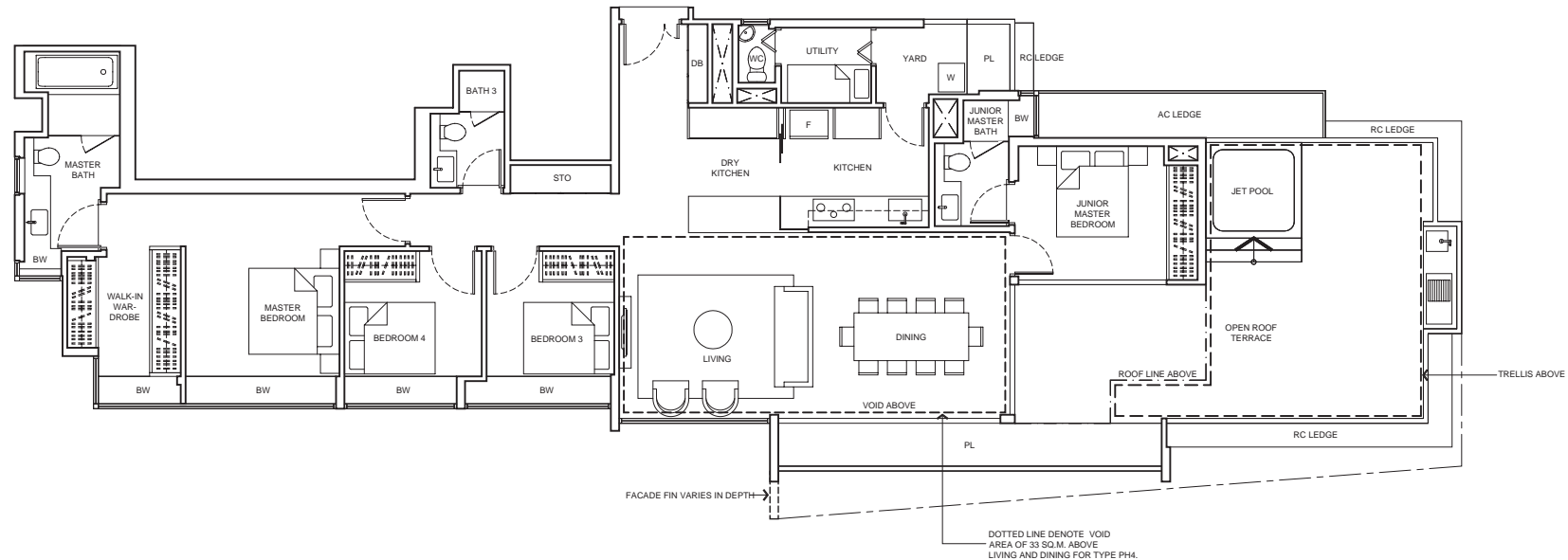
KEYPLAN
NOT TO SCALE

Area includes air-con (AC) ledge, planter (PL), bay window (BW), private enclosed space (PES), open roof terrace and void area where applicable. Some units are mirror images of the apartment plans shown in the brochure. Please refer to the key plan for orientation. The plans are subjected to change as may be approved by relevant authorities. All floor plans are approximate measurements only and are subjected to government resurvey.



Penthouse (4-Bedroom)

TYPE PH4
234 sq m / 2,519 sq ft
(including 33 sq m / 355 sq ft void)
BLK13 - #14-07



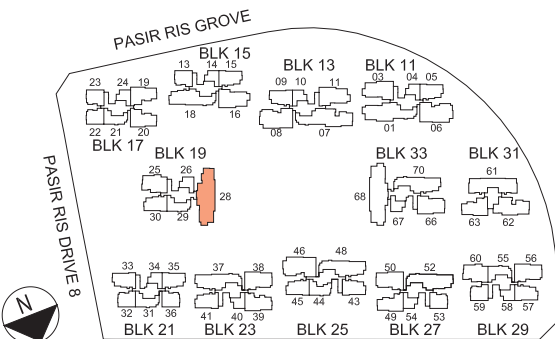
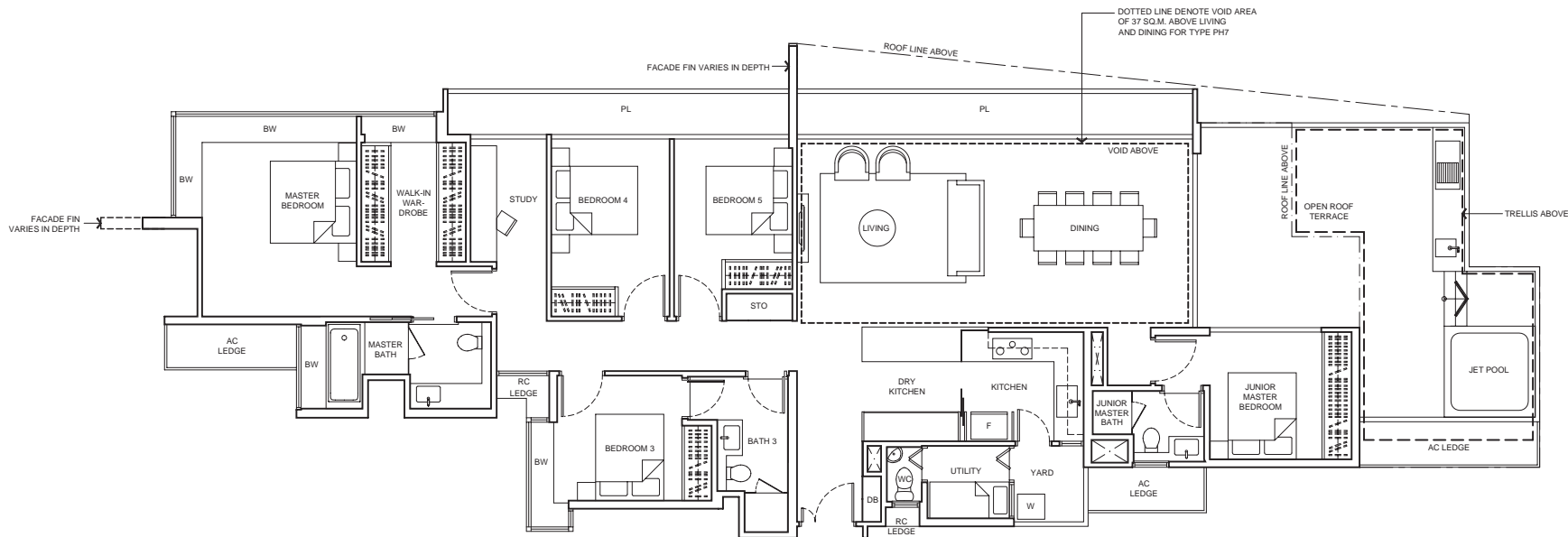
KEYPLAN
NOT TO SCALE

Area includes air-con (AC) ledge, planter (PL), bay window (BW), private enclosed space (PES), open roof terrace and void area where applicable. Some units are mirror images of the apartment plans shown in the brochure. Please refer to the key plan for orientation. The plans are subjected to change as may be approved by relevant authorities. All floor plans are approximate measurements only and are subjected to government resurvey.



Penthouse (5-Bedroom + Study)

TYPE PH7
272 sq m / 2,928 sq ft
(including 37 sq m / 398 sq ft void)
BLK19 - #13-28



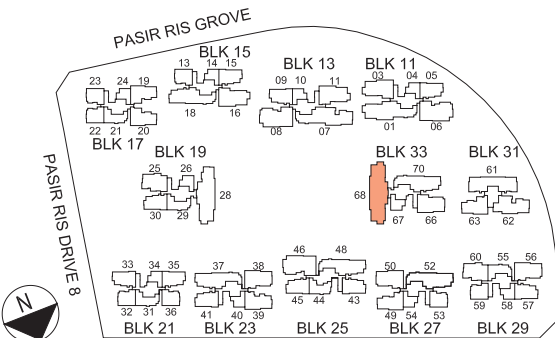
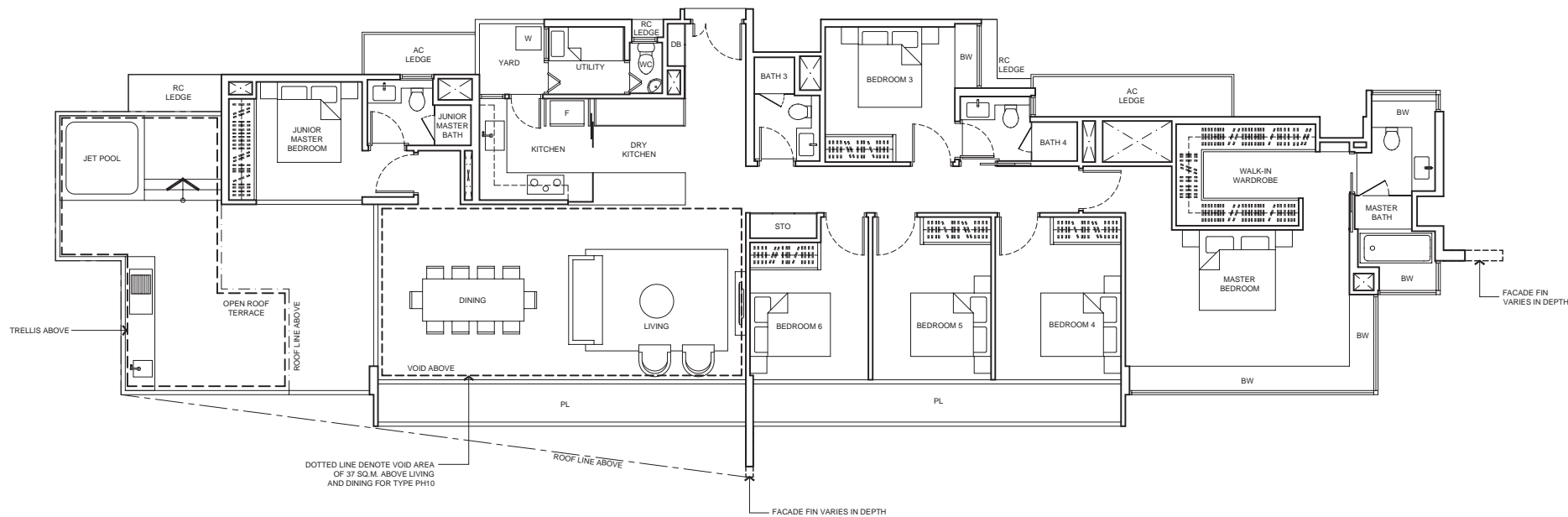
KEYPLAN
NOT TO SCALE



Area includes air-con (AC) ledge, planter (PL), bay window (BW), private enclosed space (PES), open roof terrace and void area where applicable. Some units are mirror images of the apartment plans shown in the brochure. Please refer to the key plan for orientation. The plans are subjected to change as may be approved by relevant authorities. All floor plans are approximate measurements only and are subjected to government resurvey.

Penthouse (6-Bedroom)

TYPE PH10
289 sq m / 3,111 sq ft
(including 37 sq m / 398 sq ft void)
BLK33 - #15-68

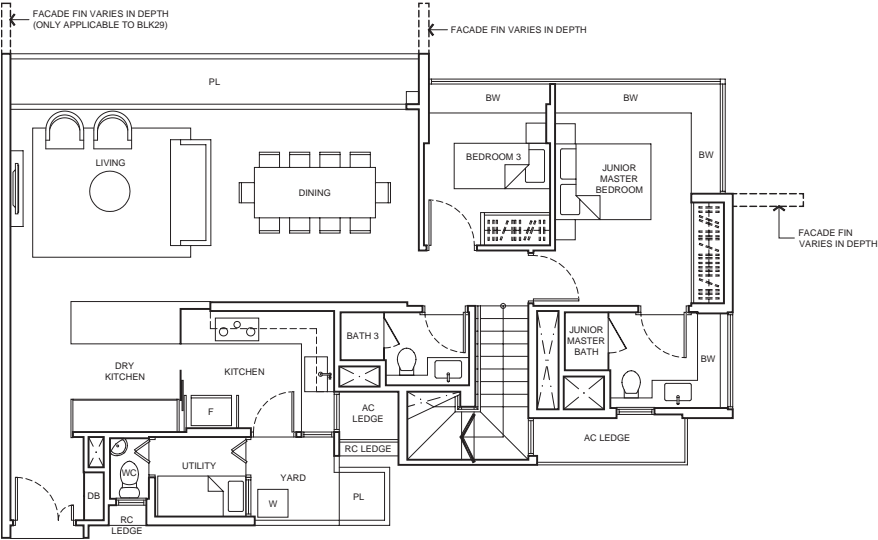


KEYPLAN
NOT TO SCALE

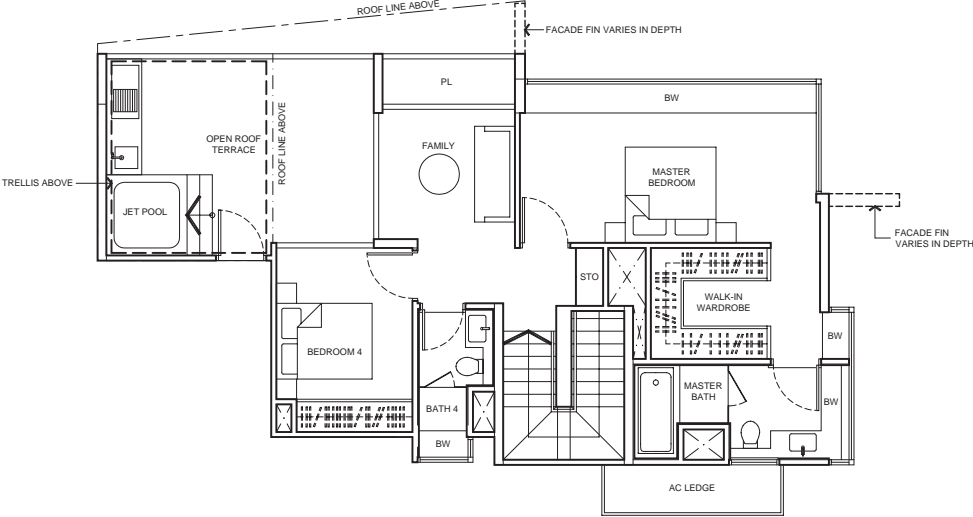
Area includes air-con (AC) ledge, planter (PL), bay window (BW), private enclosed space (PES), open roof terrace and void area where applicable. Some units are mirror images of the apartment plans shown in the brochure. Please refer to the key plan for orientation. The plans are subjected to change as may be approved by relevant authorities. All floor plans are approximate measurements only and are subjected to government resurvey.

Penthouse (4-Bedroom + Family)

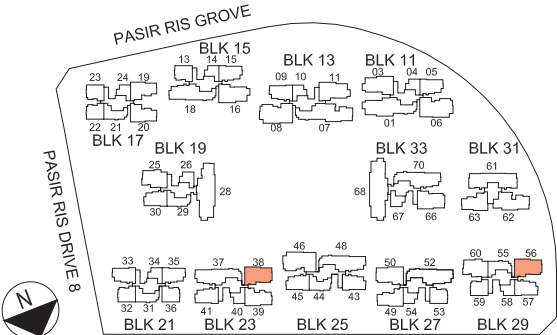
TYPE PH5
216 sq m / 2,325 sq ft
(including 6 sq m / 65 sq ft void above staircase)
BLK23 - #13-38
BLK29 - #15-56



LOWER LEVEL

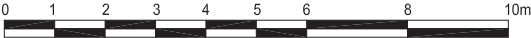


UPPER LEVEL



KEYPLAN
NOT TO SCALE

PASIR RIS DRIVE 1

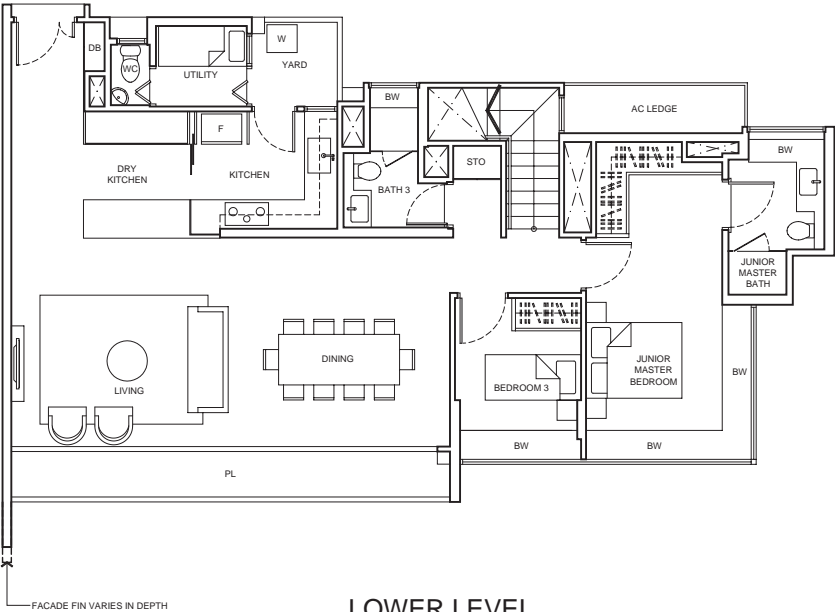


Area includes air-con (AC) ledge, planter (PL), bay window (BW), private enclosed space (PES), open roof terrace and void area where applicable. Some units are mirror images of the apartment plans shown in the brochure. Please refer to the key plan for orientation. The plans are subjected to change as may be approved by relevant authorities. All floor plans are approximate measurements only and are subjected to government resurvey.

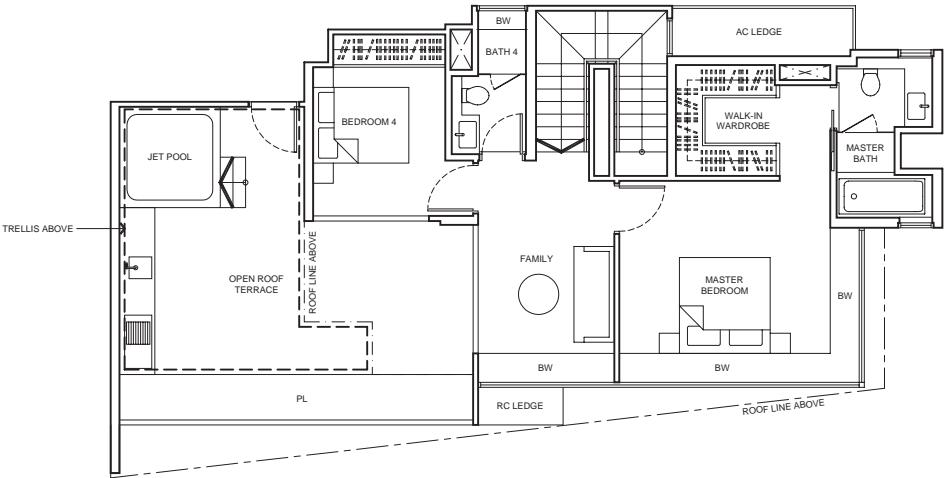
Penthouse (4-Bedroom + Family)

TYPE PH6

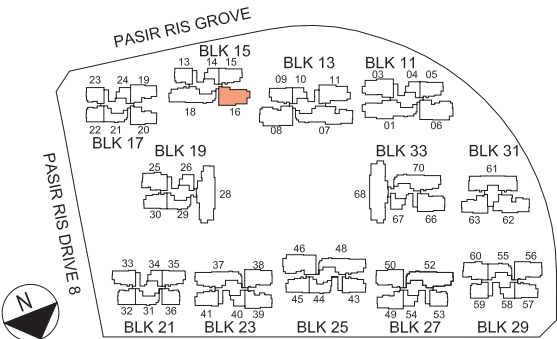
237 sq m / 2,551 sq ft
(including 6 sq m / 65 sq ft void above staircase)
BLK15 - #12-16



LOWER LEVEL



UPPER LEVEL



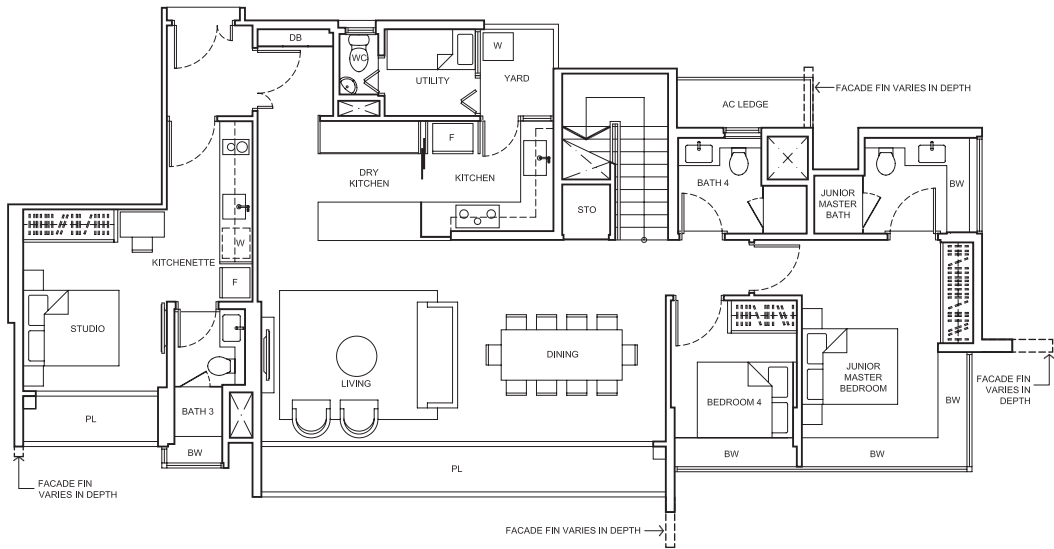
KEYPLAN
NOT TO SCALE

Area includes air-con (AC) ledge, planter (PL), bay window (BW), private enclosed space (PES), open roof terrace and void area where applicable. Some units are mirror images of the apartment plans shown in the brochure. Please refer to the key plan for orientation. The plans are subjected to change as may be approved by relevant authorities. All floor plans are approximate measurements only and are subjected to government resurvey.

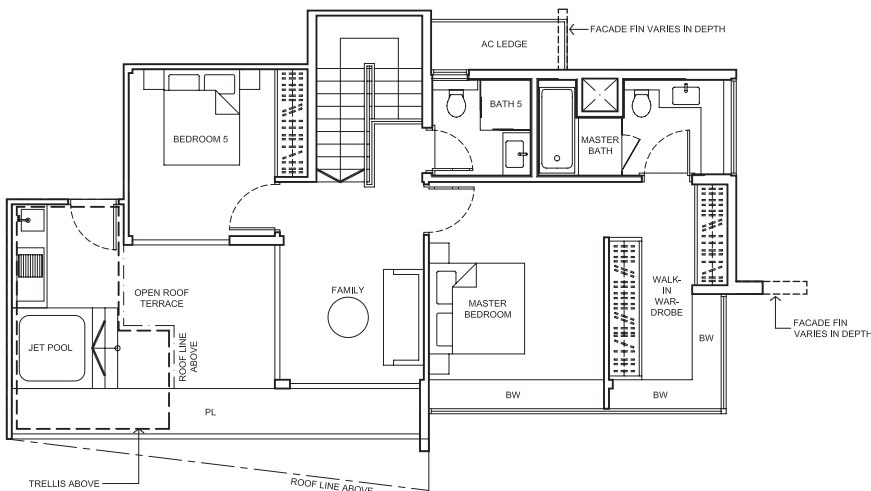


Penthouse (5-Bedroom Dual Key + Family)

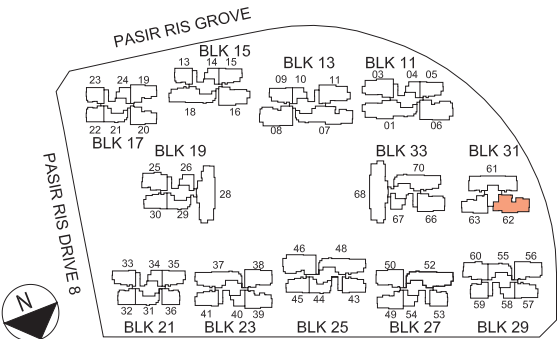
TYPE PH8
245 sq m / 2,637 sq ft
(including 5 sq m / 54 sq ft void above staircase)
BLK31 - #15-62



LOWER LEVEL



UPPER LEVEL



KEYPLAN
NOT TO SCALE

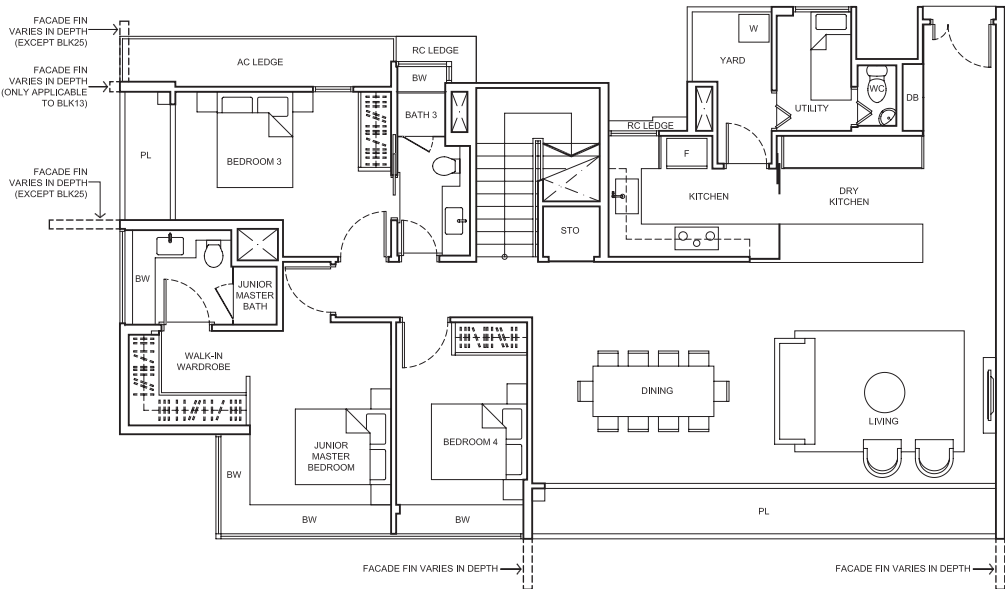
Area includes air-con (AC) ledge, planter (PL), bay window (BW), private enclosed space (PES), open roof terrace and void area where applicable. Some units are mirror images of the apartment plans shown in the brochure. Please refer to the key plan for orientation. The plans are subjected to change as may be approved by relevant authorities. All floor plans are approximate measurements only and are subjected to government resurvey.



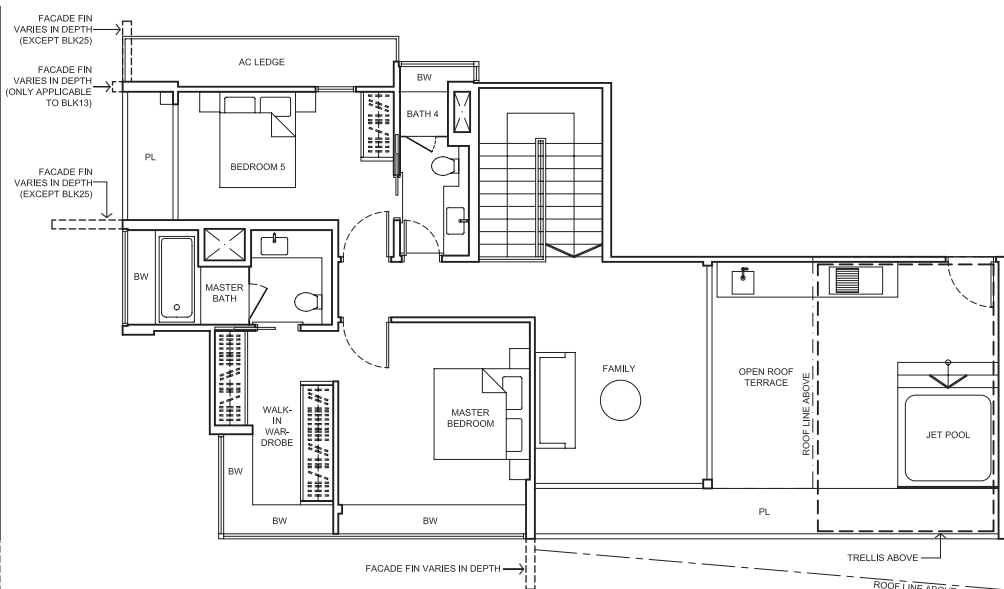
Penthouse (5-Bedroom + Family)

TYPE PH9

288 sq m / 3,100 sq ft
(including 7 sq m / 75 sq ft void above staircase)
BLK11 - #14-06*
BLK13 - #13-08
BLK25 - #13-46*

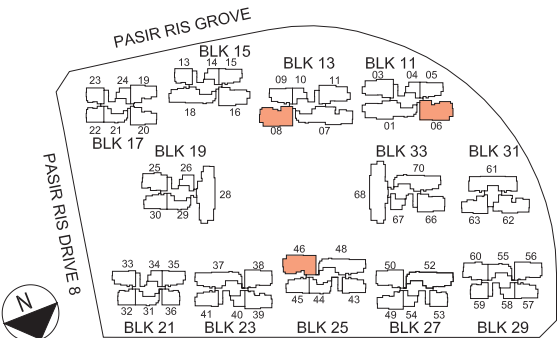


LOWER LEVEL

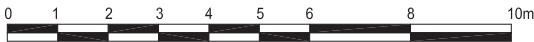


UPPER LEVEL

*mirror image unit



KEYPLAN
NOT TO SCALE



Area includes air-con (AC) ledge, planter (PL), bay window (BW), private enclosed space (PES), open roof terrace and void area where applicable. Some units are mirror images of the apartment plans shown in the brochure. Please refer to the key plan for orientation. The plans are subjected to change as may be approved by relevant authorities. All floor plans are approximate measurements only and are subjected to government resurvey.